



Palladian Gardens, W4

£450,000

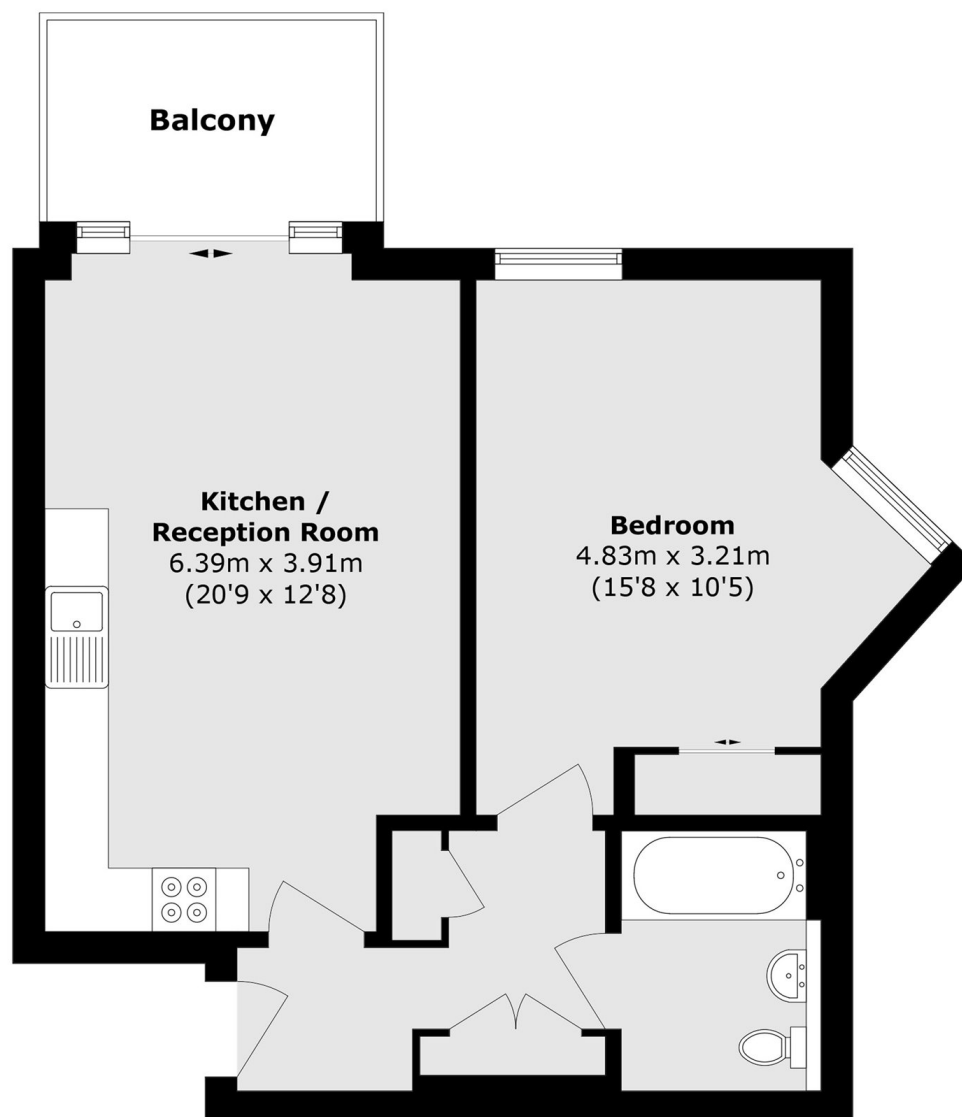
A well-presented one bedroom apartment within this popular gated development. With lift access, concierge service, balcony, secure allocated parking and no onward chain.

Palladian Gardens is ideally located in Chiswick, close to Turnham Green and Stamford Brook Underground stations (District line). Chiswick High Road is nearby with a range of shops, cafes, and restaurants, and there is easy access to the A4/M4 for driving in and out of London.

Features

- One Double Bedroom
- Balcony
- Concierge
- Secure Underground Parking
- Close To Transport
- No Onward Chain

Palladian Gardens, London, W4



Total area (approx.): 54.9 sq. m (590.9 sq. ft)

Balcony area (approx.): 7.1 sq. m (75.9 sq. ft)