

Drewstead Road, SW16

£350,000

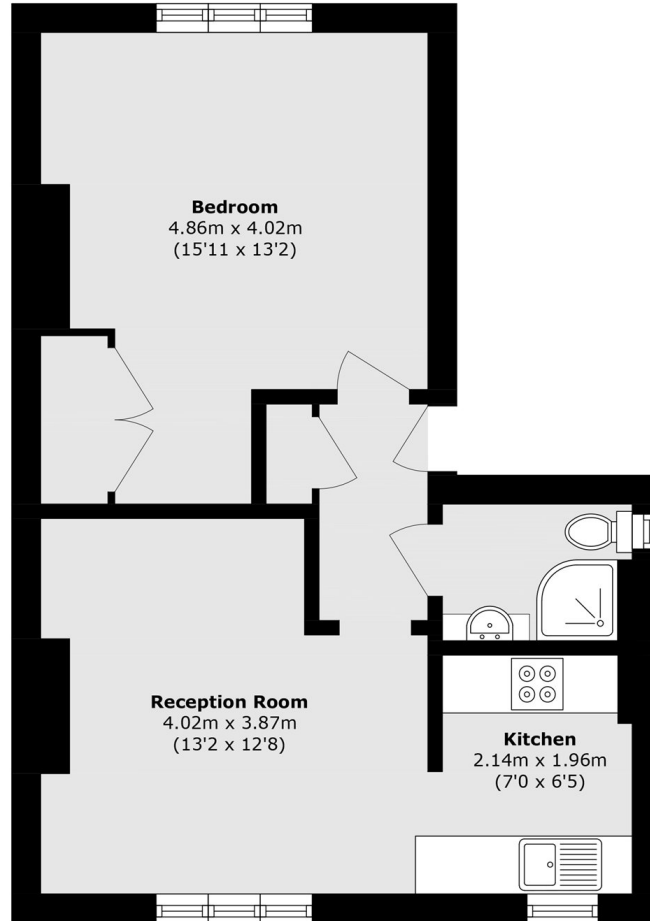
Located on a charming, quiet street is this one double bedroom, first floor home. This property is full of natural light and has high ceilings throughout. The living space is open plan with a modern kitchen and exposed floorboards and the quiet rear bedroom is spacious with an area which is perfect for fitted wardrobes. This property also benefits from a newly renovated shower room, a share in the freehold and no onward chain.

Drewstead Road is a very desirable tree-lined street perfectly situated for everything Streatham Hill has to offer. With Tooting Common located at the end of the road it also provides easy access to Balham high street and The Northern line. Rail links from Streatham Hill mainline station and frequent bus routes to Brixton town centre are also within walking distance.

Features

- One Double Bedroom
- Open-Plan Living
- Chain Free
- Great Condition
- Stylish Apartment
- Share of Freehold

Drewstead Road, London, SW16



Total area (approx.): 44.5 sq. m (478.9 sq. ft)