

Foxhall



Estate Agents

625 Foxhall Road
Ipswich IP3 8ND

Unit 4, Ropes Drive
Kesgrave IP5 2FU

01473 721133

01473 613296

info@foxhallestateagents.co.uk

www.foxhallestateagents.co.uk



Norwich Road

Claydon, Ipswich, IP6 0DF

Offers over £200,000



Norwich Road

Claydon, Ipswich, IP6 0DF

Offers over £200,000



Front Garden

Pathway with a couple of short steps up to the front door, mostly laid to lawn with a flowerbed border.

Entrance Hall

Entry via a double glazed obscure door facing the front with two double glazed obscure windows to the sides, radiator, access to the stairs and a door to the lounge.

Lounge / Diner

16'5" x 11'10" (5.00m x 3.61m)

Double glazed window facing the front, coving, mid height dado rail, under stairs storage cupboard, two radiators and a door into the kitchen.

Kitchen

15'1" x 8'7" (4.60m x 2.62m)

Two double glazed windows facing the rear, double glazed obscure door to the rear going out into the rear garden with a double glazed obscure window above, wall and base fitted units with cupboards and drawers, plumbing for a washing machine, space for a oven, space for a fridge freezer, stainless steel single sink bowl and drainer unit with hot and cold taps above, plenty of cupboard space for storage, tiled splash-back and tiled flooring.

Landing

Access to the loft, radiator, large airing cupboard which houses a radiator and doors to bedrooms one, two and the bathroom.

Bedroom One

15'0" x 9'3" (4.57m x 2.82m)

Two double glazed windows facing the front, radiator and new carpet flooring.

Bedroom Two

14'1" x 7'9" (4.29m x 2.36m)

Double glazed window facing the rear, double built-in wardrobe, radiator, new carpet flooring and a cupboard which houses the Baxi boiler.

Bathroom

6'11" x 5'5" (2.11m x 1.65m)

Double glazed obscure window facing the rear, panel bath with mixer taps and an electric shower over, low-flush W.C., pedestal wash hand basin with a mixer tap, tiled splash-back and a stainless steel heated towel rail.

Rear Garden

Fully enclosed south facing courtyard style garden, mostly made up of patio area with a patch of artificial grass and a stone shingle border, fully enclosed by panel fencing with a brick built storage shed which has power and a double glazed window, outside tap, raised flowerbed border and a gate to the rear leading to a passageway.

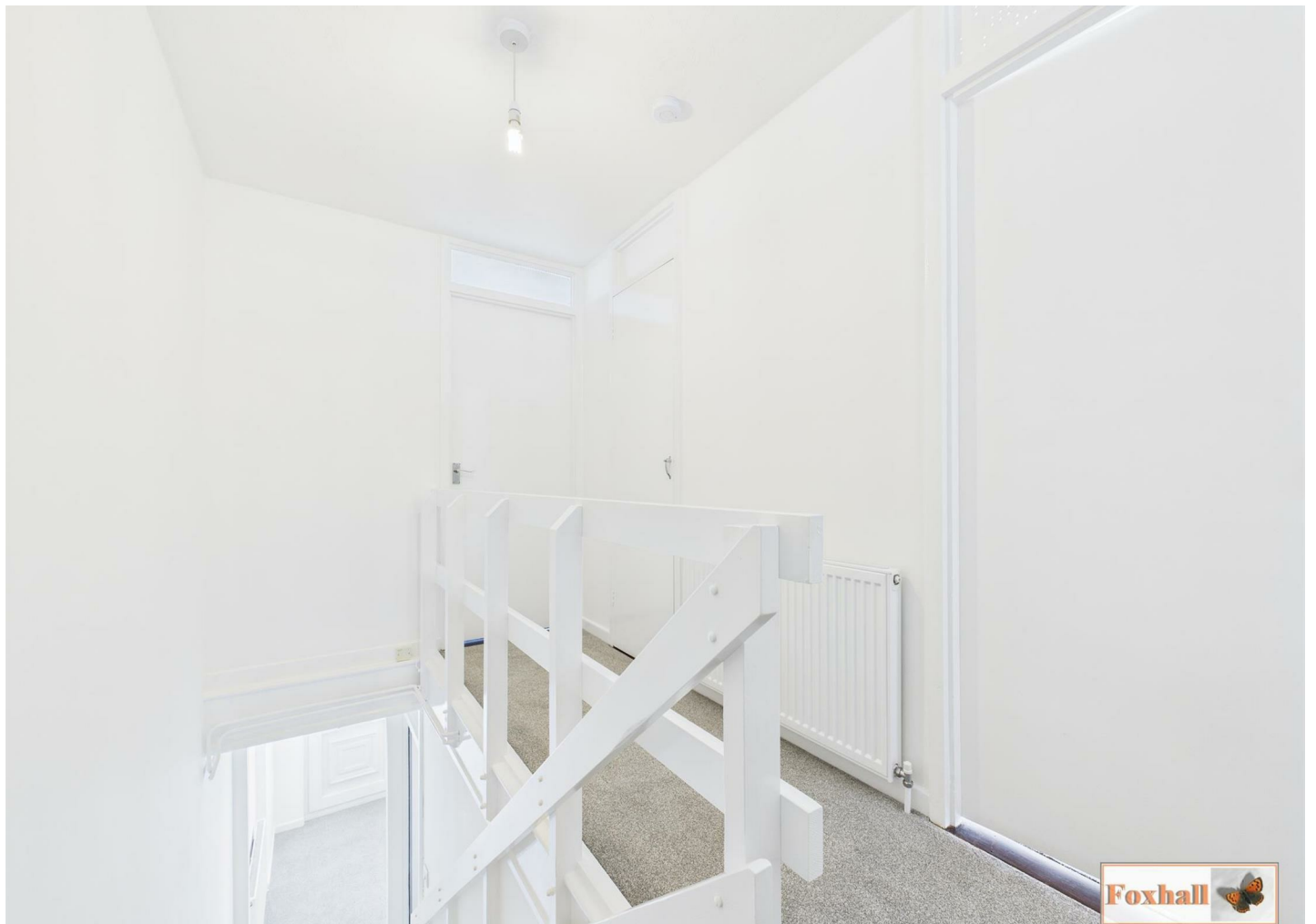
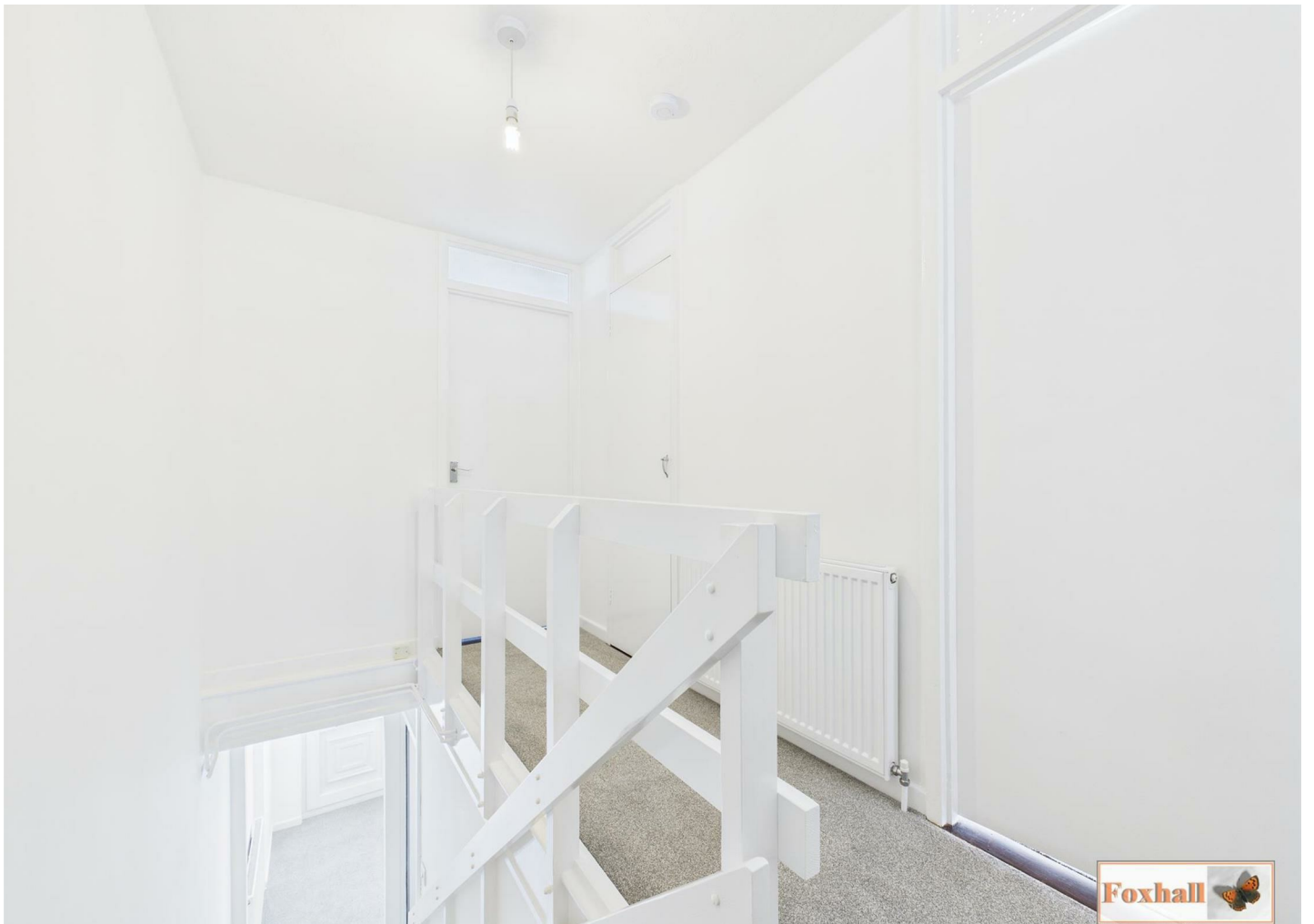
Agents Notes

Tenure - Freehold

Council Tax Band - B







Road Map



Hybrid Map



Terrain Map



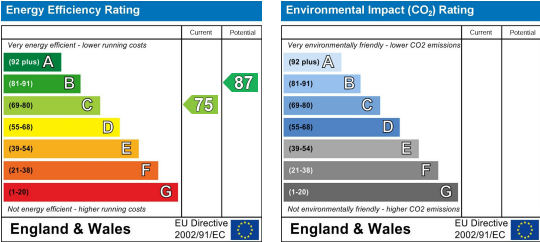
Floor Plan



Viewing

Please contact us on 01473 721133 if you wish to arrange a viewing appointment for this property or require further information.

Energy Efficiency Graph



These particulars, whilst believed to be accurate are set out as a general outline only for guidance and do not constitute any part of an offer or contract. Intending purchasers should not rely on them as statements of representation of fact, but must satisfy themselves by inspection or otherwise as to their accuracy. No person in this firms employment has the authority to make or give any representation or warranty in respect of the property.