



Chatsworth Court, W8

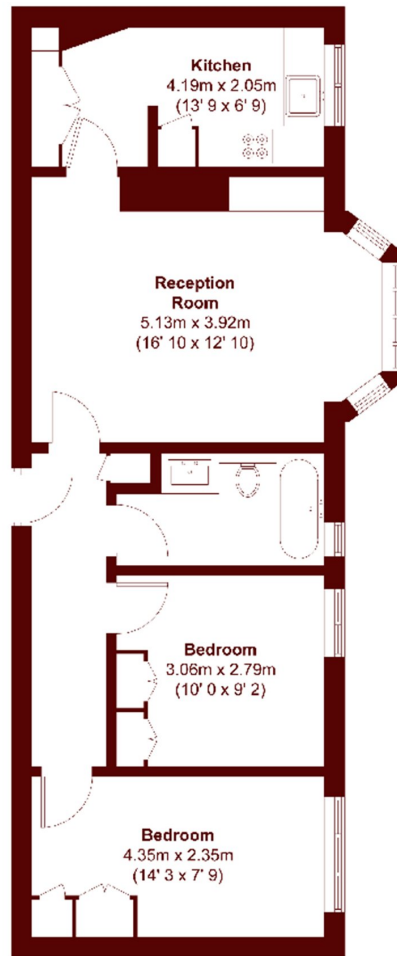
£750,000



- Two Bedroom
- Separate Kitchen

- Raised Ground Floor
- Communal Garden

- Share of Freehold
- Porter



Ground Floor

APPROX. GROSS INTERNAL FLOOR AREA
639 SQFT / 59.4 SQM

Marsh & Parsons Kensington

9 Kensington Church Street,
London, W8 4LF
020 7368 4450