



Sloane Avenue, SW3

£1,350,000

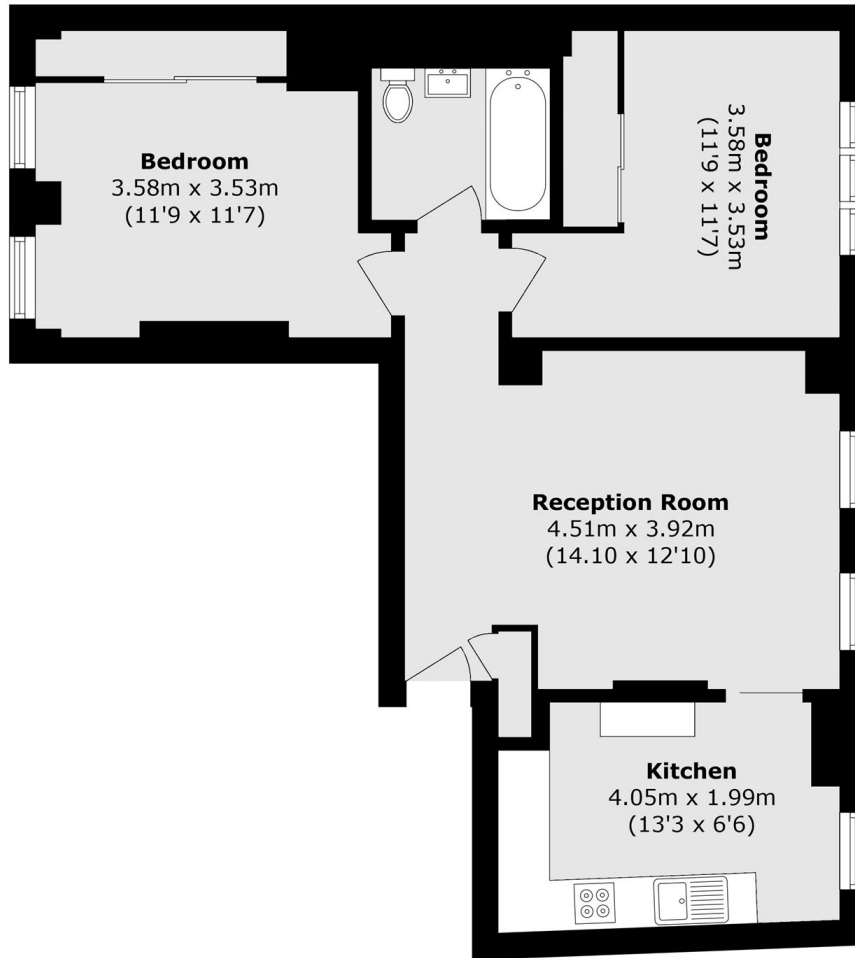
A rarely available two bedroom apartment filled with natural light and benefiting from a share of the freehold. This property is in excellent condition throughout and would be an ideal London home or rental investment.

Nell Gwynn House is a notable Art Deco residential building located on Sloane Avenue. Built in 1937 and designed by architect G. Kay Green, the building is famous for its unique "W" shaped footprint.

Features

- Share of Freehold
- Breakfast Bar
- Two Bedrooms
- Porters
- Lift
- Excellent Condition

Sloane Avenue, London, SW3



Fourth Floor

Total area (approx.): 65.2 sq. m (701.8 sq. ft)