



Silverhill Place, Coventry, CV7 8HY

**SHELDON
BOSLEY
KNIGHT** LAND AND
PROPERTY
PROFESSIONALS

Property Description

*** AVAILABLE NOW *** PHOTOS MAY BE OF A SIMILAR PROPERTY** This brand new two-bedroom end-terrace home is located on Radburn Drive, Coventry, offering modern, energy-efficient living in a desirable residential development with convenient access to local amenities and transport links.

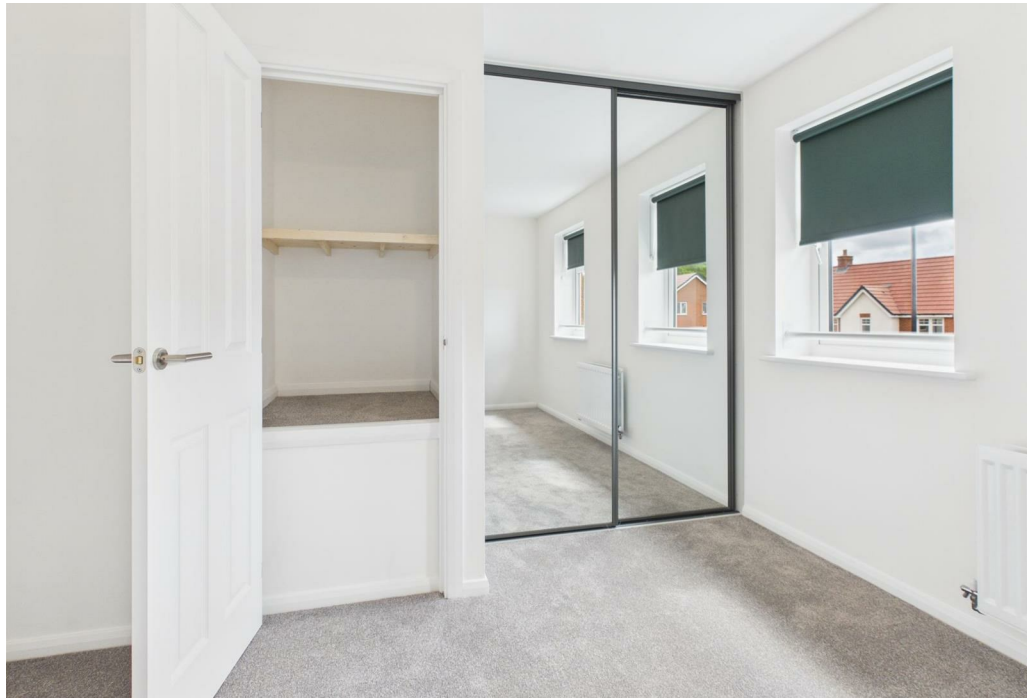
The ground floor comprises a welcoming entrance hallway, a bright and spacious lounge, a modern fitted kitchen/diner, and access to the private rear garden.

To the first floor there are two bedrooms and a family bathroom with bath, shower over, WC and sink.

Externally, the property benefits from a private driveway, rear garden, and modern energy-efficient features including an air source heat pump, electric vehicle charging point, and double glazing.

Offered UNFURNISHED.







Key Features

- Available Now - ALTERNATIVE DEPOSIT OPTION AVAILABLE
- PETS WELCOMED
- Electric Vehicle Charging – The property benefits from a dedicated electric vehicle charging point, offering at home charging and supporting an eco friendly lifestyle.
- Professionally managed
- Unfurnished
- Bosch appliances
- Solar PV – The property benefits from installed Solar PV panels, helping to reduce energy bills and improve overall energy efficiency.

£1,275 Per Month