



## Conway Road

Offers in the region of £180,000

- Three bedroom mid-terrace home
- Two spacious reception rooms
- Modern fitted kitchen
- First floor family bathroom
- Enclosed rear garden with lawn
- Convenient Newport location
- EPC Rating: C



 3  1  1

**Pinkmove**

01633 746088  
team@pinkmove.co.uk



## About the property

Situated on Conway Road in Newport, this three-bedroom mid-terrace property offers the perfect opportunity for first-time buyers or families alike.

Conveniently located close to local shops, schools and amenities, the property also benefits from excellent transport links with easy access to the M4.

The accommodation briefly comprises an entrance hallway with stairs leading to the first floor. To the front is a spacious lounge featuring a large bay window, allowing an abundance of natural light and providing ample space for living furniture.

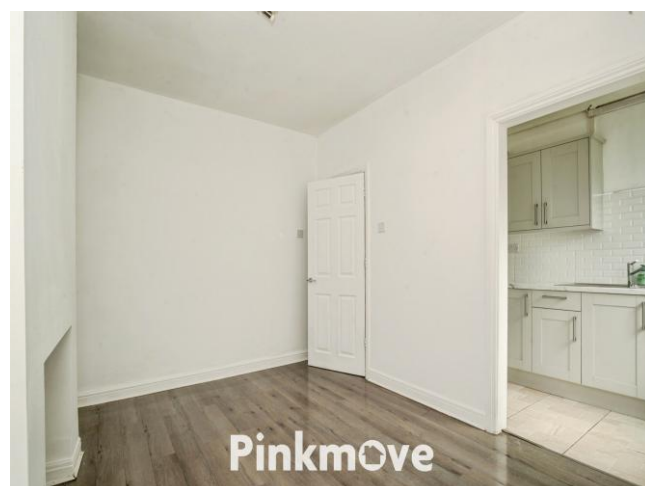
To the rear is a separate dining room, ideal for family meals and entertaining. The modern fitted kitchen is positioned off the dining room and offers access to the rear garden.

To the first floor are three bedrooms, two of which are comfortable doubles, with the principal bedroom benefitting from built-in storage.

The third bedroom is a good-sized single room. The family bathroom features a modern white suite.

Externally, the rear garden offers a patio area leading onto a lawn, providing an ideal space for outdoor entertaining.

This fantastic home is ready to move straight into and must be viewed to be fully appreciated.





## Accommodation

**Lounge**

**Dining Room**

**Kitchen**

**Bedroom 1**

**Bedroom 2**

**Bedroom 3**

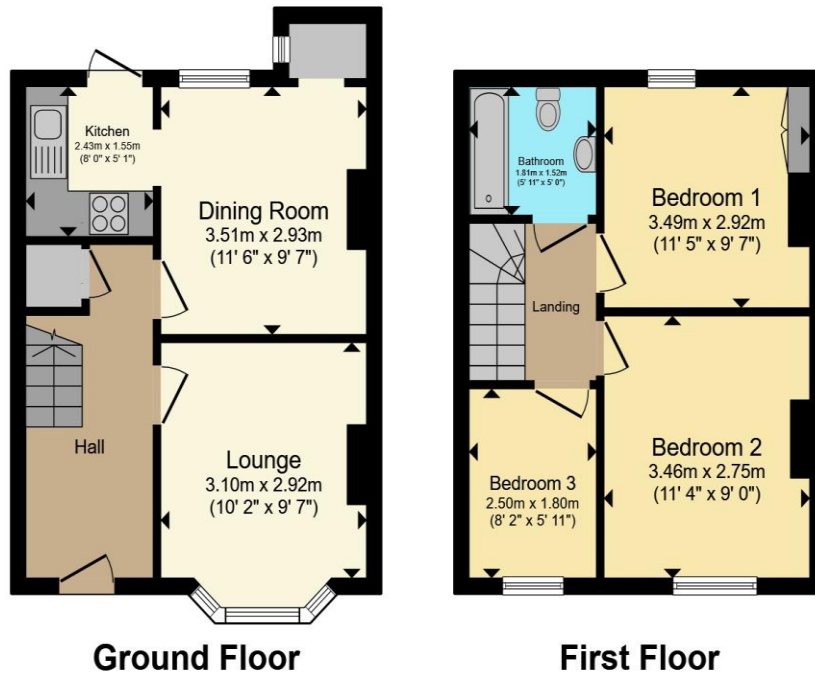
**Bathroom**

01633 746088

team@pinkmove.co.uk

**Pinkmove**

## Floorplan



Total floor area 64.1 sq.m. (690 sq.ft.) approx

This floor plan is for illustrative purposes only. It is not drawn to scale. Any measurements, floor areas (including any total floor area), openings and orientation are approximate. No details are guaranteed, they cannot be relied upon for any purpose and they do not form part of any agreement. No liability is taken for any error, omission or misstatement. A party must rely upon its own inspection(s). Powered by [www.localagent.com](http://www.localagent.com)

Pinkmove

## Important Information

Note while we endeavour to make our sales details accurate and reliable, if there is any point which is of particular interest to you, please contact the office and we will be pleased to confirm the position for you. We have not personally tested any apparatus, equipment, fixtures, fittings or services and cannot verify they are in working order or fit for their purposes. Nothing in these particulars is intended to indicate that carpets or curtains, furnishings or fittings, electrical goods (whether wired or not). Gas fires or light fittings or any other fixtures not expressly included form part of the property offered for sale. This computer generated Floorplan, if applicable, is intended as a general guide to the layout and design of the property. It is not to scale and should not be relied upon for dimensions. Tenure: We cannot confirm the tenure of the property as we have not had access to the legal documents. The buyer is advised to obtain verification from their solicitor or surveyor.

Peter Alan Limited is registered in England and Wales under company number 2073153. Registered Office is Cumbria House, 16-20 Hockliffe Street, Leighton Buzzard, Bedfordshire, LU7 1GN. VAT Registration Number is 500 2481 05. For activities relating to regulated mortgages and non-investment insurance contracts, Peter Alan Limited is an appointed representative of Connells Limited which is authorised and regulated by the Financial Conduct Authority. Connells Limited's Financial Services Register number is 302221. Most buy-to-let

