

Churchview Road, TW2

£825,000

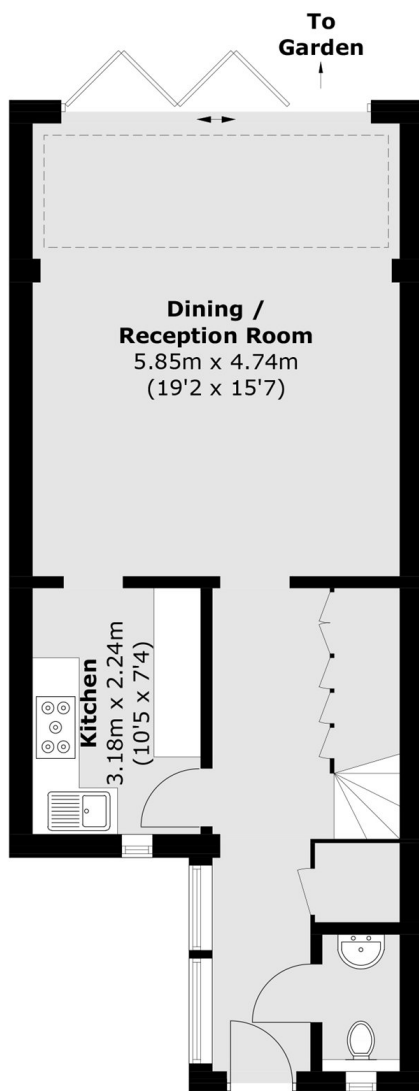
A beautifully presented three bedroom semi detached family home offering well balanced, contemporary accommodation arranged over three floors. The ground floor features a welcoming entrance hallway leading to a bright spacious reception room with bi-fold doors opening onto a south-west facing garden. Upstairs there are three well proportioned bedrooms with a family bathroom on the first floor, and en-suite servicing the principle bedroom on the top floor.

Churchview Road is a quiet cul-de-sac located close to the picturesque Twickenham Green and just a few hundred yards to the high street. There are also outstanding schools nearby such as Waldegrave Girls and Trafalgar.

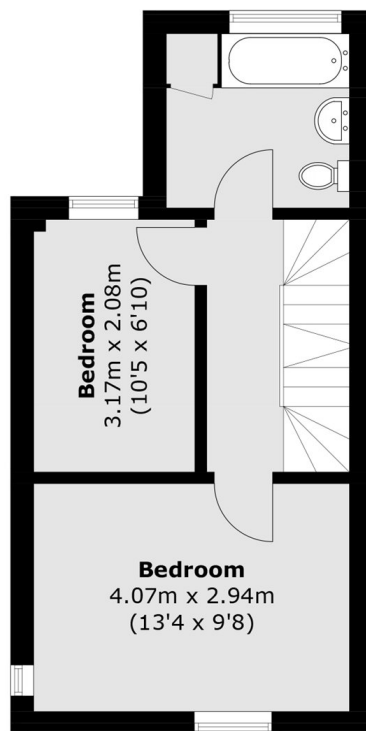
Features

- Semi Detached House
- Three Bedrooms
- Two Bathrooms & Guest WC
- Off-Street Parking
- South-West Facing Garden
- Popular Location

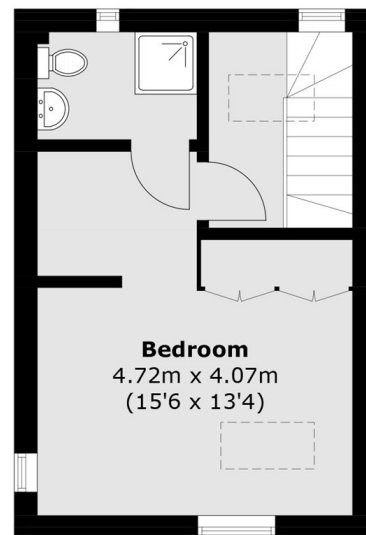
Churchview Road, Twickenham, TW2



Ground Floor



First Floor



Second Floor

Total area (approx.): 108.5 sq. m (1,167.9 sq. ft)