

Marylebone Road, NW1

£3,900 Per calendar month

This two bedroom apartment is on the ground floor of a substantial portered building in Marylebone. The property has high ceilings, a good sized reception room with wood flooring, a modern kitchen, two bedrooms and two bathrooms.

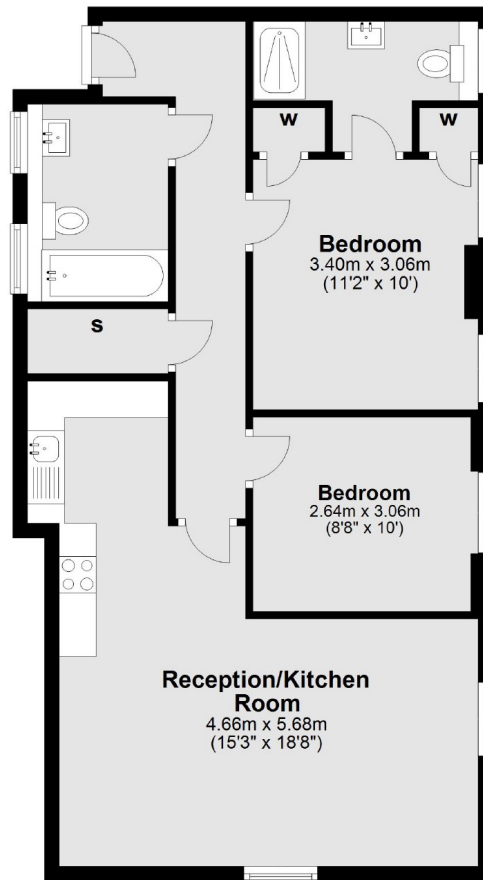
Harley House is an attractive Edwardian gated mansion block on Marylebone Road, with 24 hour portage and lift access. Situated just moments from the beautiful open spaces of Regent's Park and the vibrant shops, bars and restaurants of Marylebone Village.

Features

- Gated Mansion Building
- Lift And Porter
- Two Bedrooms
- Two Bathrooms
- Kitchen/Reception
- Wood Flooring

Marylebone Road, London, NW1

Ground Floor



Total area: approx. 66.9 sq. metres (720.4 sq. feet)