



Cranfield Road, SE4

£2,150 Per calendar month

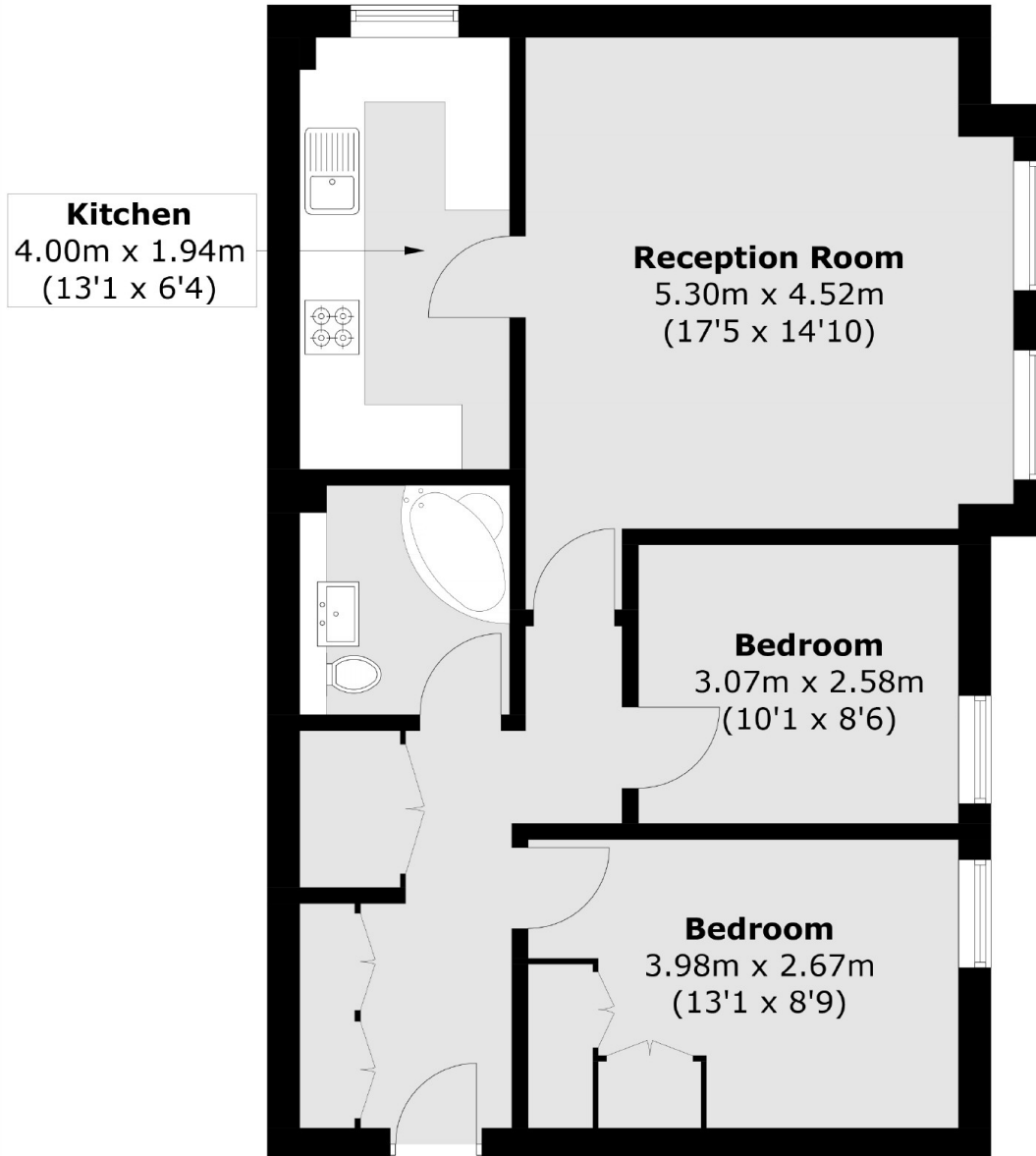
Located in the Brockley Conservation area is this 2 bedroom, top floor purpose-built flat. Part of a well-maintained private block it features a spacious living room, a separate kitchen, 2 bedrooms, a modern bathroom, double glazing and an intercom entry system. The flat is conveniently located for Brockley station allowing quick and easy access into central London as well as London Overground services to Shoreditch and Highbury and Islington.

Continently located only 0.4 miles from Brockley Station where you can get fast and frequent services into London Bridge in around 10 minutes.

Features

- Two double bedrooms
- Spacious
- Brockley Conservation Area
- Top floor flat
- Part furnished
- Great location

Cranfield Road,
London, SE4



Second Floor

Total area (approx.): 63.4 sq. m (682.4 sq. ft)

Dexters

Lewisham
228 Algernon Road
London
SE13 7AG

Lettings
0208 690 8020

Energy Rating: C. We aim to make our particulars both accurate and reliable. However they are not guaranteed; nor do they form part of an offer or contract. If you require clarification on any points then please contact us, especially if you're traveling some distance to view. Please note that appliances and heating systems have not been tested and therefore no warranties can be given as to their good working order.

 **RICS** | Regulated
Estate Agent
and Letting Agent

dexters.co.uk