



Stoneyford Grove, Birmingham

Guide Price £285,000





PROPERTY OVERVIEW

Situated in a quiet cul-de-sac location, a fantastic opportunity to purchase this most deceptive three bedroom extended semi-detached which must be viewed internally to be appreciated. This property offers spacious family accommodation and benefits from gas central heating, double glazing and has the added attraction of a loft conversion/office with a spiral staircase leading from the second bedroom. The accommodation briefly comprises of: enclosed porch, entrance hall, guest cloakroom, two reception rooms, extended breakfast/kitchen, three good sized bedrooms, loft room/office, bathroom, separate wc, garage and private garden.

PROPERTY LOCATION

Yardley Wood is an area in Birmingham, it offers excellent range of amenities nearby which include Birmingham Town Centre, Solihull Town Centre, Schools and parks. There are a range of services within Hall Green including commuter train service to Stratford Upon Avon and bus routes. In addition the National Exhibition Centre, Birmingham International Airport and Railway Station are all within an approximate 30 minute drive and the M42 provides fast links to the M1, M5, M6 and M40 motorways.

Council Tax band: C

Tenure: Freehold





- Three Bedroom Extended Semi Detached
- Spacious Family Accommodation
- Large Extended Breakfast/Kitchen
- Loft Room/Office
- Private Rear Garden

ENTRANCE HALL

RECEPTION ROOM ONE

16' 7" x 12' 3" (5.05m x 3.73m)

RECEPTION ROOM TWO

12' 4" x 11' 11" (3.77m x 3.64m)

KITCHEN/DINING ROOM

16' 3" x 12' 6" (4.95m x 3.80m)

LAUNDRY/UTILITY ROOM

8' 6" x 6' 11" (2.60m x 2.10m)

GUEST WC

3' 6" x 3' 0" (1.07m x 0.91m)

FIRST FLOOR

BEDROOM ONE

16' 2" x 9' 4" (4.92m x 2.85m)

BEDROOM TWO

11' 11" x 12' 8" (3.64m x 3.86m)

BEDROOM THREE

9' 9" x 7' 7" (2.98m x 2.30m)

BATHROOM

6' 10" x 5' 4" (2.08m x 1.63m)

WC

3' 0" x 4' 2" (0.91m x 1.27m)

LOFT ROOM

HOME OFFICE

14' 0" x 13' 1" (4.26m x 4.00m)





OUTSIDE THE PROPERTY

NORTH FACING GARDEN

GARAGE

ITEMS INCLUDED IN THE SALE

Extractor, all carpets, some curtains, all blinds, fitted wardrobes in bedrooms one and two, some light fittings, garden shed and CCTV

FURTHER ITEMS TO BE INCLUDED IN THE SALE

Fitted desks in the office/loft

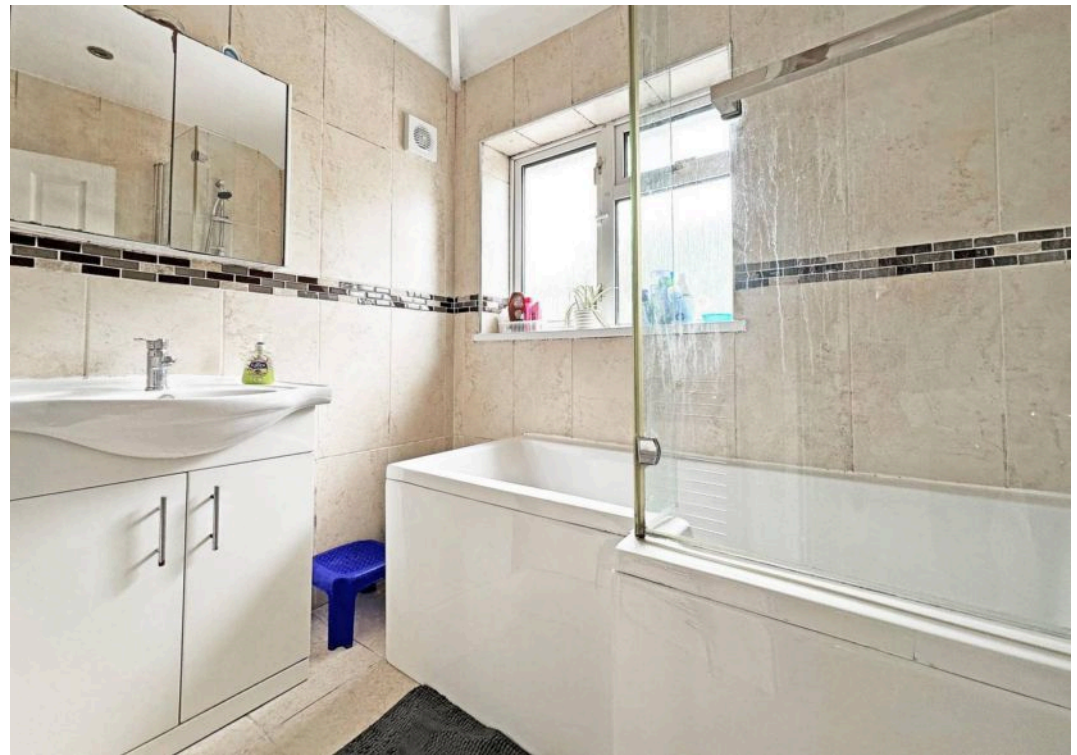
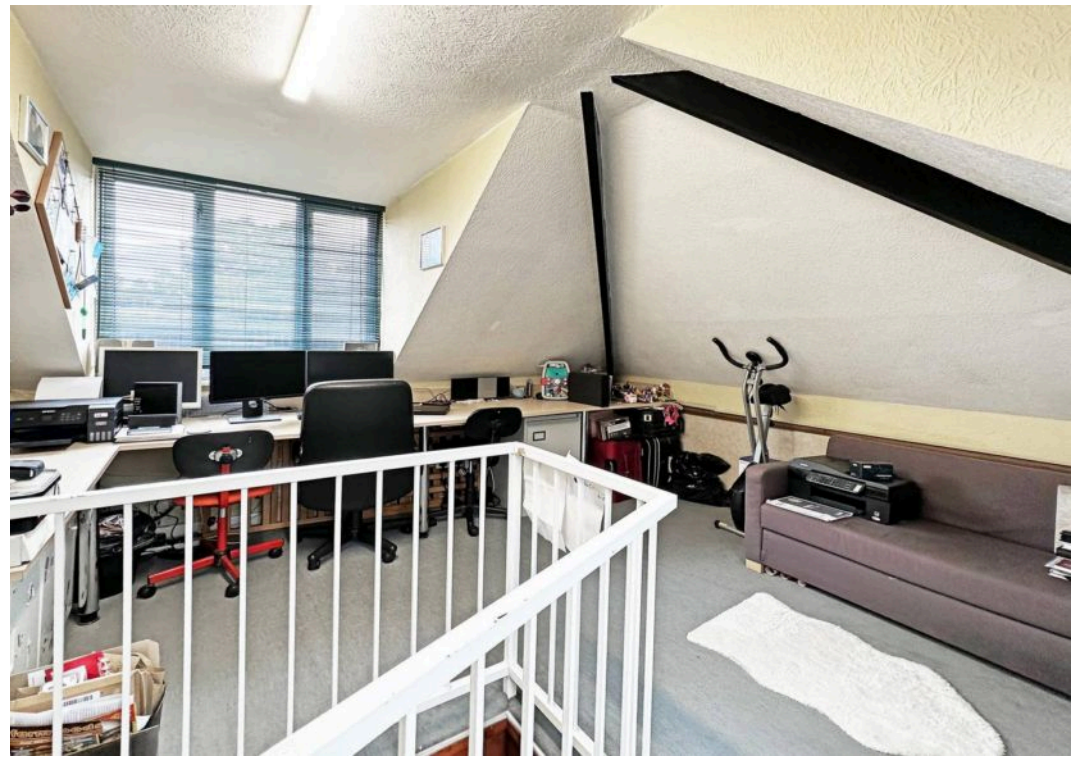
ADDITIONAL INFORMATION

Services: main gas, electricity and mains sewers.

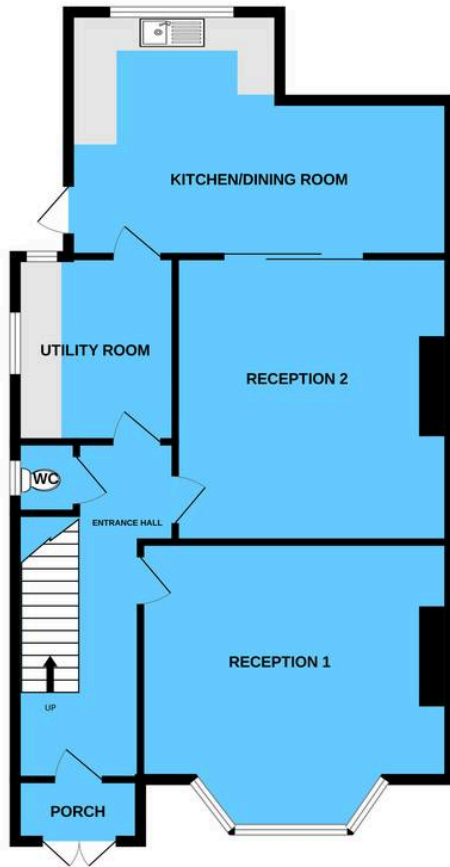
Broadband: Virgin Media.

INFORMATION FOR POTENTIAL BUYERS

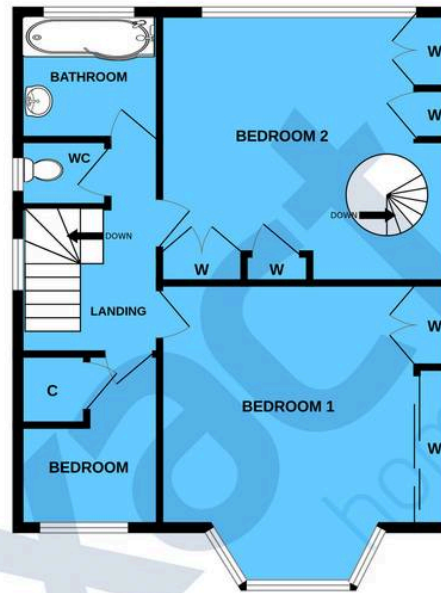
1. MONEY LAUNDERING REGULATIONS - Intending purchasers will be required to produce identification documentation at the point an offer is accepted as we are required to undertake anti-money laundering (AML) checks such that there is no delay in agreeing the sale. Charges apply per person for the AML checks.
2. These particulars do not constitute in any way an offer or contract for the sale of the property.
3. The measurements provided are supplied for guidance purposes only and potential buyers are advised to undertake their measurements before committing to any expense.
4. Xact Homes have not tested any apparatus, equipment, fixtures, fittings or services and it is the buyers interests to check the working condition of any appliances.
5. Xact Homes have not sought to verify the legal title of the property and the buyers must obtain verification from their solicitor.



GROUND FLOOR



1ST FLOOR



LOFT ROOM



Whilst every attempt has been made to ensure the accuracy of the floorplan contained here, measurements of doors, windows, rooms and any other items are approximate and no responsibility is taken for any error, omission or mis-statement. This plan is for illustrative purposes only and should be used as such by any prospective purchaser. The services, systems and appliances shown have not been tested and no guarantee as to their operability or efficiency can be given.
Made with Metropix ©2023

Xact Homes

6 The Square, Solihull - B91 3RB

0121 712 6222 • solihull@xacthomes.co.uk • www.xacthomes.co.uk

xact
HOMES

