



YORK ROAD, SW11

£515,000

- One bedroom
- High specification
- Winter garden
- Concierge
- Excellent location
- Energy rating: B





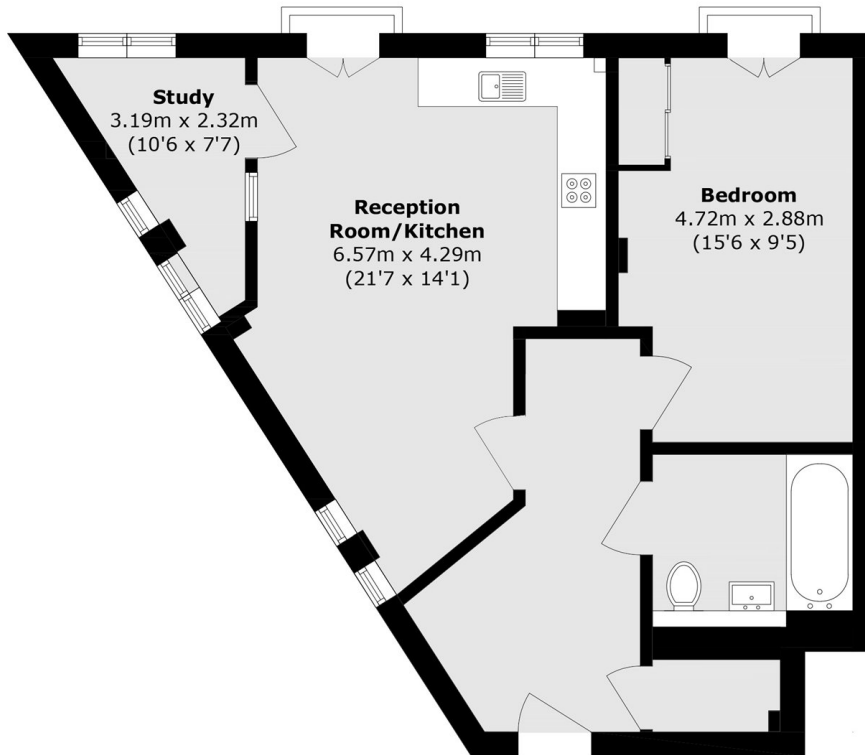
ABOUT THE HOME

A stylish one bedroom flat situated just moments from the River Thames. Filled with natural light, the property features underfloor heating throughout and a versatile winter garden, currently used as a study and ideal for working from home. Residents also benefit from the convenience and security of a concierge service, video entry system, a communal roof garden, bike storage and hyper-optic broadband.

York Road is well located for transport links, with Clapham Junction station just half a mile away and providing connection across London and the south west. Local shops, cafés and other amenities are all within walking distance, while the green open space of York Gardens sits diagonally opposite. The riverfront, Battersea Park and Battersea Power Station are also within close proximity.







Total area (approx.): 58.2 sq. m (626.4 sq. ft)

JACKSONS CLAPHAM

73 Abbeville Road, London,
SW4 9JN

Sales: 020 8487 3177

Lettings: 020 8487 3178

Energy Rating: B We aim to make our particulars both accurate and reliable. However they are not guaranteed; nor do they form part of an offer or contract. If you require clarification on any points then please contact us, especially if you're traveling some distance to view. Please note that appliances and heating systems have not been tested and therefore no warranties can be given as to their good working order.