



## Westfield Crescent, Shipley

- Cul-de-Sac Position
- Sought After Area
- Close to Amenities in Wrose
- 3 Bedrooms
- Close to Schools
- Gardens and Driveway

**Price £199,995**

**Tenure: Freehold**

**HUNTERS®**  
HERE TO GET *you* THERE

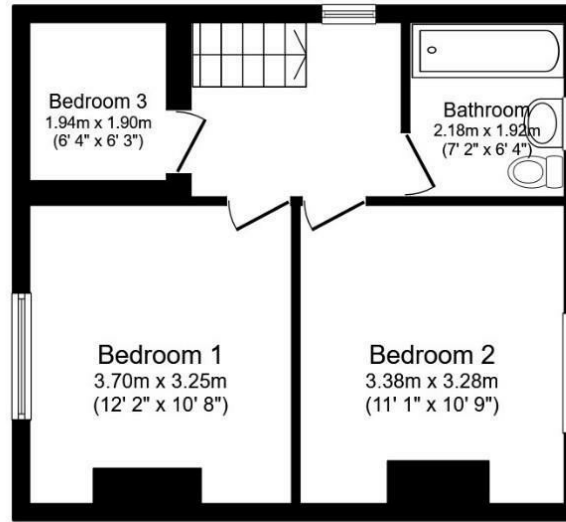
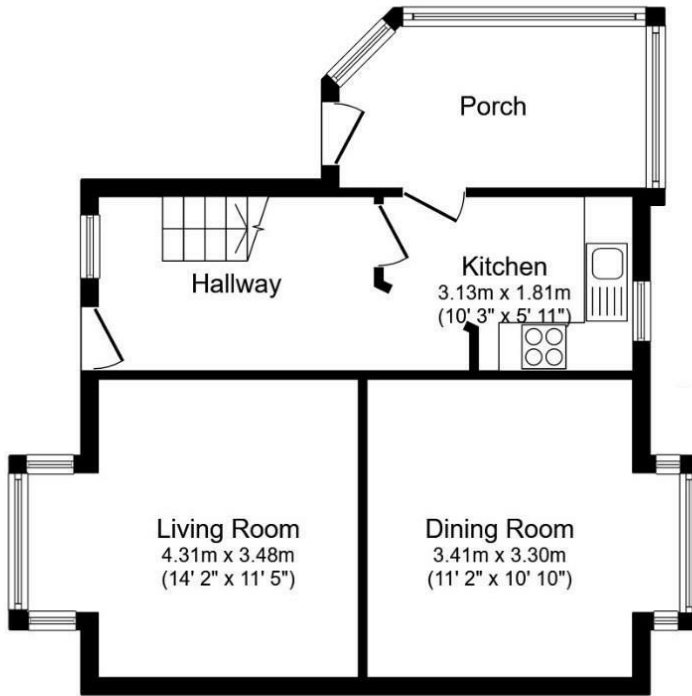
# Westfield Crescent, Shipley

## DESCRIPTION

Book Your Viewing Today - Located in the heart of Wrose, this newly refreshed three-bedroom home on Westfield Crescent offers well-proportioned accommodation ideally suited to families, first-time buyers or anyone looking for a property ready to move straight into.



Council Tax: B



Total floor area: 89.5 sq.m. (963 sq.ft.)

This floor plan is for illustrative purposes only. It is not drawn to scale. Any measurements, floor areas (including any total floor area), openings and orientations are approximate. No details are guaranteed, they cannot be relied upon for any purpose and do not form any part of any agreement. No liability is taken for any error, omission or misstatement. A party must rely upon its own inspection(s). Powered by www.Propertybox.io

### Viewing

Please contact our Hunters Shipley Office on 01274 594040 if you wish to arrange a viewing appointment for this property or require further information.

7-9 Briggate, Shipley, BD17 7BP

Tel: 01274 594040 Email:

shipley@hunters.com <https://www.hunters.com>



## ENERGY PERFORMANCE CERTIFICATE

The energy efficiency rating is a measure of the overall efficacy of a home. The higher the rating the more energy efficient the home is and the lower the fuel bills will be.

Energy Efficiency Rating		Environmental Impact (CO <sub>2</sub> ) Rating			
Very energy efficient - lower running costs	Current	Potential	Very environmentally friendly - lower CO <sub>2</sub> emissions	Current	Potential
(92 plus) <b>A</b>			(92 plus) <b>A</b>		
(81-91) <b>B</b>			(81-91) <b>B</b>		
(69-80) <b>C</b>			(69-80) <b>C</b>		
(55-68) <b>D</b>			(55-68) <b>D</b>		
(39-54) <b>E</b>			(39-54) <b>E</b>		
(21-38) <b>F</b>			(21-38) <b>F</b>		
(1-20) <b>G</b>			(1-20) <b>G</b>		
Not energy efficient - higher running costs			Not environmentally friendly - higher CO <sub>2</sub> emissions		
		EU Directive 2002/91/EC			EU Directive 2002/91/EC
England & Wales			England & Wales		

These particulars are intended to give a fair and reliable description of the property but no responsibility for any inaccuracy or error can be accepted and do not constitute an offer or contract. We have not tested any services or appliances (including central heating if fitted) referred to in these particulars and the purchasers are advised to satisfy themselves as to the working order and condition. If a property is unoccupied at any time there may be reconnection charges for any switched off/disconnected or drained services or appliances - All measurements are approximate.

**THINKING OF SELLING?** If you are thinking of selling your home or just curious to discover the value of your property, Hunters would be pleased to provide free, no obligation sales and marketing advice. Even if your home is outside the area covered

**HUNTERS**  
 HERE TO GET *you* THERE