



27 Pulford Way, Milton OX13 6GN



**Hodsons**  
...your move, our passion  
Sales | Lettings

## 27 Pulford Way

---

A superbly presented detached family home, located on a generous corner plot within this extremely popular development within Milton. Providing well proportioned accommodation over its two floors, complemented by landscape gardens, a full width paved terrace and glazed pergola. Offered to the market in exceptional condition throughout, with the balance of a new homes warranty. A striking family home in this highly regarded development.

Forming part of this modern 'Redrow' development located in the village of Milton Heights. Situated 6 miles from Abingdon and just 3 miles from Didcot with its mainline train station. Milton Heights is ideally placed for access to both the M40 and M4 providing good transport links into London.

Bedrooms: 3

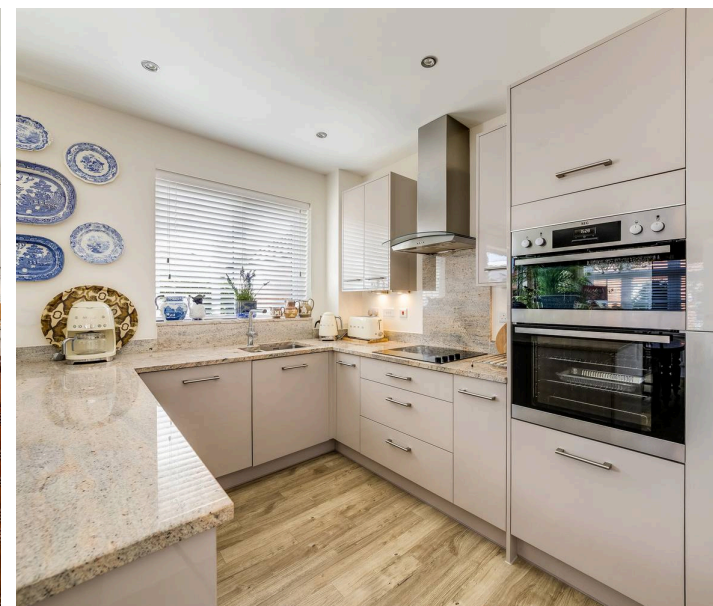
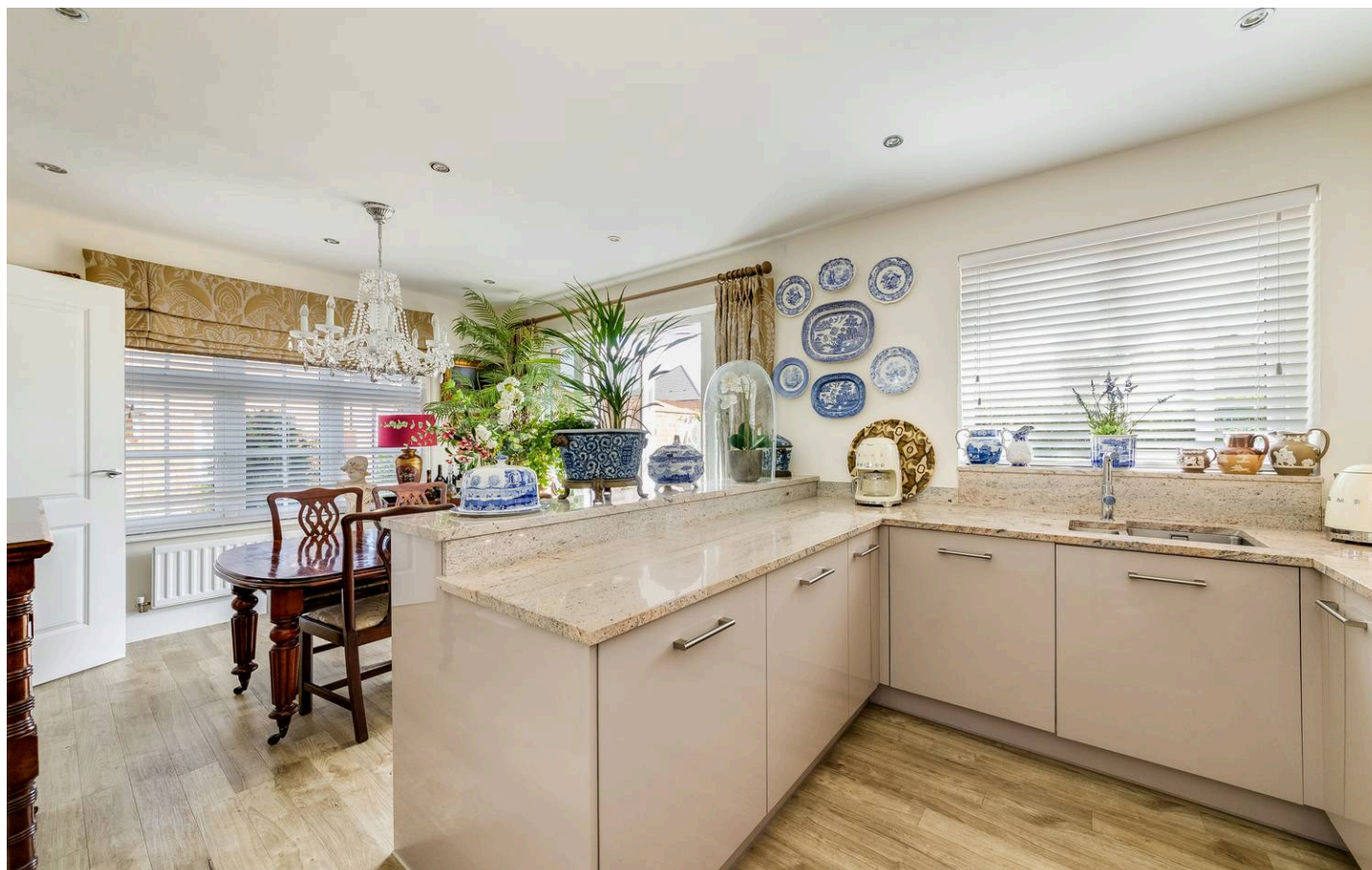
Bathrooms: 2

Reception Rooms: 2

Council Tax Band: E

Tenure: Freehold

EPC: B

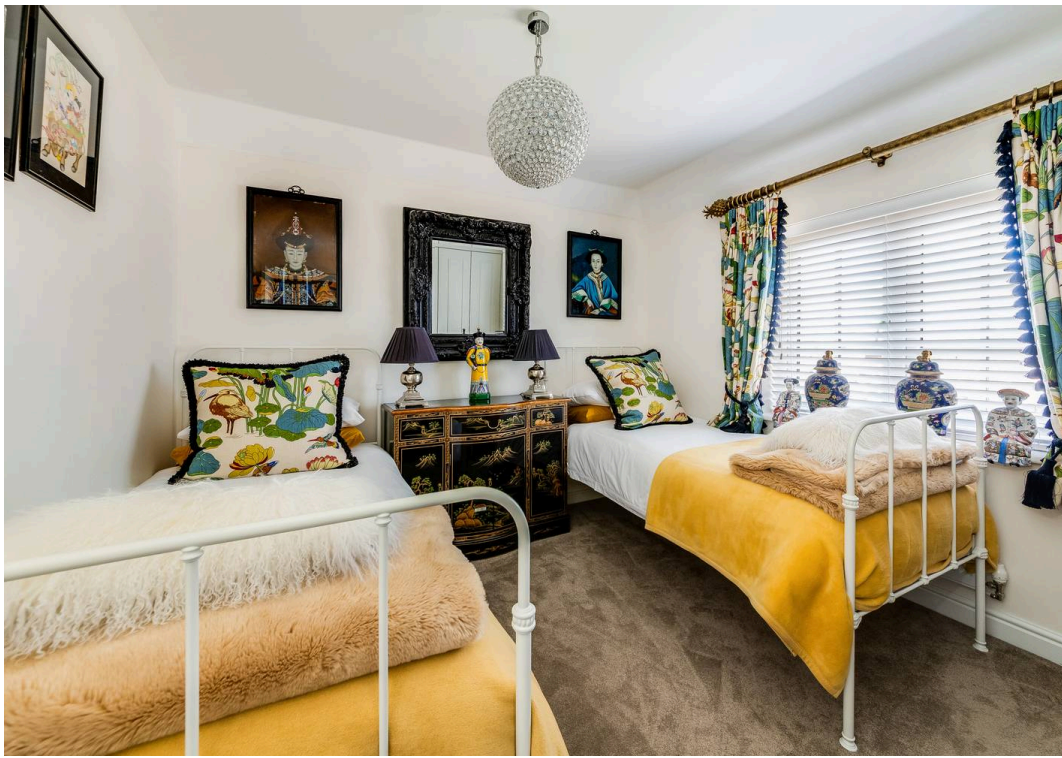




## Key Features

- Entrance hall with stairs rising to the first floor, doors to all principal rooms and ground floor WC
- Spacious, wonderfully light double aspect kitchen/dining room, the dining space with double doors opening out onto a full width paved terrace
- Contemporary fitted kitchen with integral appliances and granite work surfaces complemented by a separate utility room with second sink and door leading out to the side
- Good size double aspect living room
- Three double bedrooms - all three benefiting from built-in storage
- The principal bedroom is particularly noteworthy, with generous built-in storage and a spacious contemporary en-suite
- Family bathroom with white suite
- Externally the property benefits from a generous corner plot having been thoughtfully planted by the existing owner, the rear garden offers good degrees of privacy
- Full width paved terrace, gated access to the tandem driveway and low maintenance artificial lawn. Of particular note is the striking glass roofed pergola which enables year round use of the terrace
- Single garage complete with personal door to the garden and ample driveway parking









BRITISH  
PROPERTY  
AWARDS  
2024

GOLD WINNER

ESTATE AGENT  
IN ABINGDON



**Introducing the Hodsons team...  
...trust in our experience!**



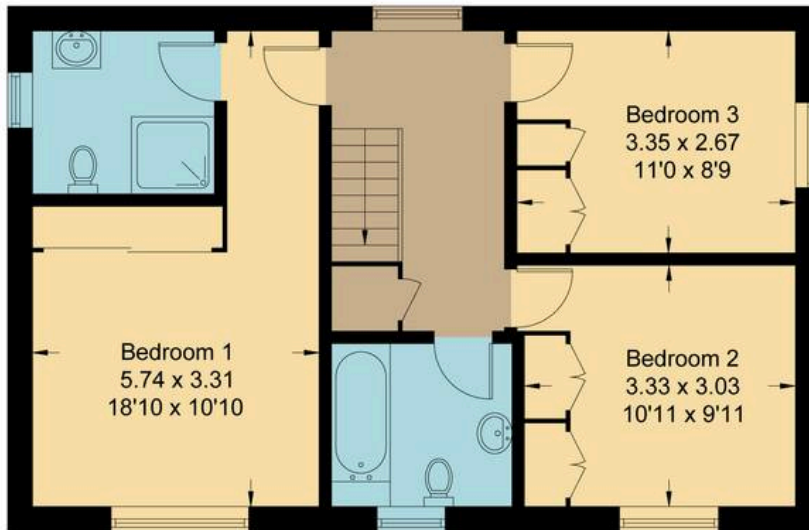
# Pulford Way, OX13

Approximate Gross Internal Area = 105.0 sq m / 1130 sq ft

Garage = 16.90 sq m / 182 sq ft

Total = 121.90 sq m / 1312 sq ft

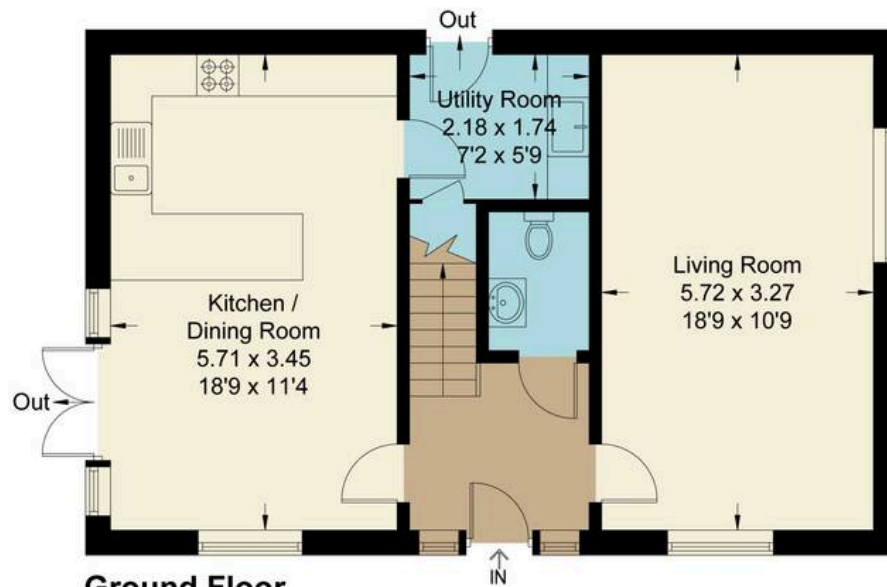
For identification only - Not to scale



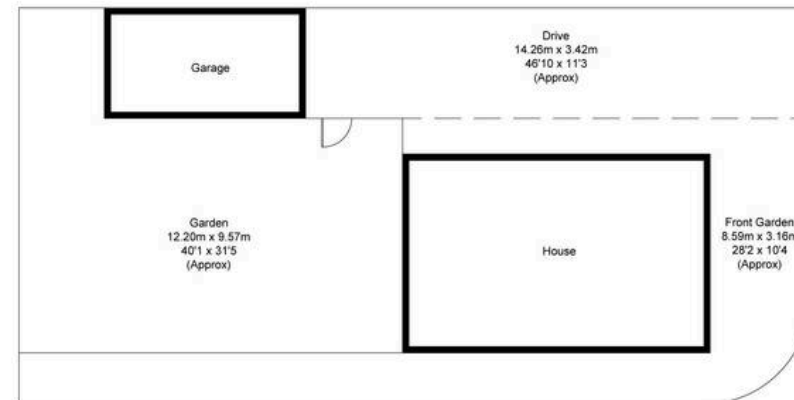
First Floor



(Not Shown In Actual Location / Orientation)



Ground Floor



Not to scale, for illustration and layout purposes only.  
© Mortimer Photography. Produced for Hodsons.  
Unauthorised reproduction prohibited



5 Ock Street, Abingdon,  
Oxfordshire, OX14 5AL  
T: 01235 553686  
E: abingdon@hodsons.co.uk  
www.hodsons.co.uk