

EDEN MIDCALF  
— SALES & LETTINGS —

£240,000  
Sandy Bank  
Bewdley, DY12 2AY

BLAIREAU  
COTTAGE

26

## PROPERTY SUMMARY

An attractively presented two bedroom period terraced cottage pleasantly located within picturesque and sought after Bewdley, and just a short walk from an excellent selection of town amenities. Originally forming two properties and offering a well appointed layout, which retains much of its original character, and includes two reception rooms, together with a kitchen, with integrated appliances, and a conservatory / laundry room to the rear, with French doors opening onto a small courtyard rear garden. The garden enjoys a pleasant open rear aspect.

2



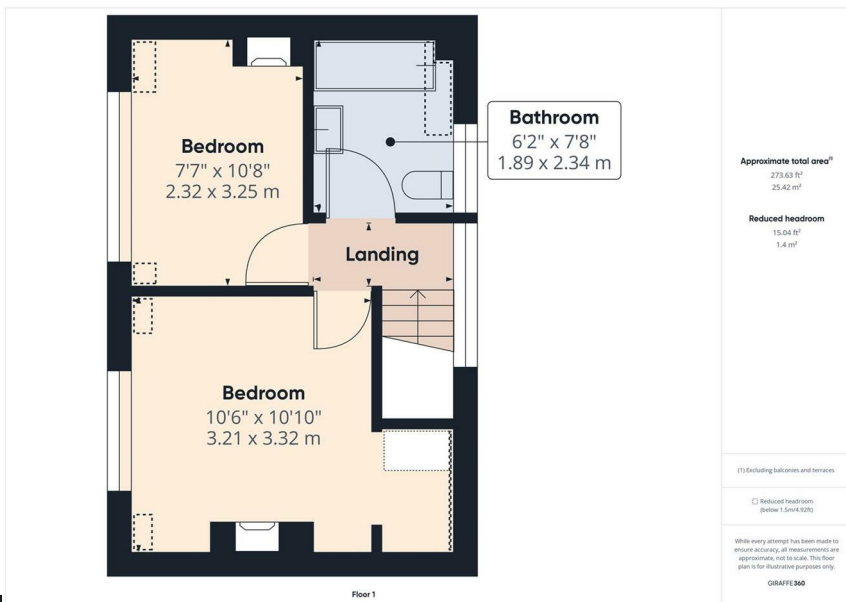
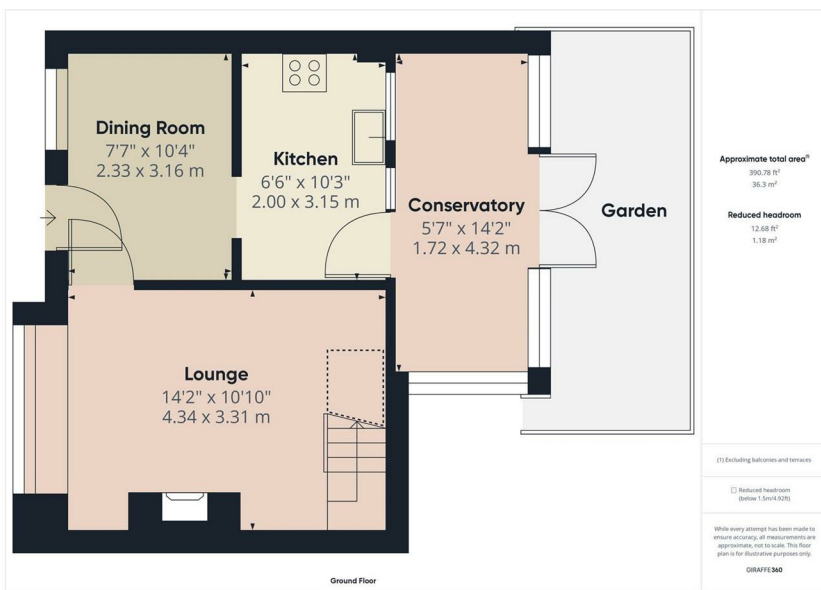
1



2





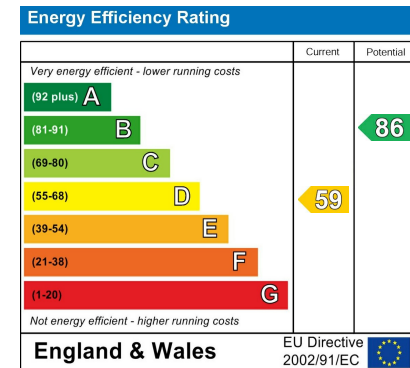


**LOCAL AUTHORITY**  
Wyre Forest District Council

**TENURE**  
Freehold

**COUNCIL TAX BAND**  
C

**VIEWINGS**  
By prior appointment only



Agents Note: Whilst every care has been taken to prepare these particulars, they are for guidance purposes only. All measurements are approximate and are for general guidance purposes only and whilst every care has been taken to ensure their accuracy, they should not be relied upon and potential buyers/tenants are advised to recheck the measurements.

**EDEN MIDCALF**  
SALES & LETTINGS

5 Load Street  
Bewdley  
DY12 2AF

01299 402392  
wyreforest@edenmidcalf.co.uk  
<https://www.edenmidcalf.co.uk/>  
us/