

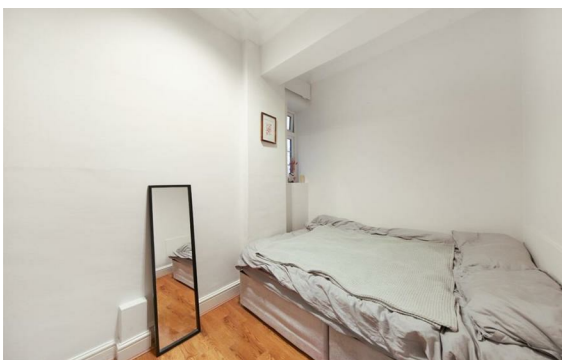


Old Marylebone Road, Marylebone, London, NW1

Rent £1,385 PCM

4 Bed | 3 Bath | 1 Reception

Please call us on 020 7724 2233 or email us info@newingtonstates.com to book a viewing.



60 Upper Montagu Street

London

W1H 1SN

020 7724 2233

info@newingtonstates.com

A well-presented four-bedroom apartment offering generous living accommodation and a practical layout within a secure red brick mansion block. Positioned on the lower ground floor, the property features a bright reception room with dining space, a fully fitted kitchen with integrated appliances, and four bedrooms including three spacious doubles. Two en-suite shower rooms are complemented by a separate bathroom, while wooden flooring and built-in storage enhance the practicality throughout.

Ideally located close to Edgware Road Station and Marylebone Station, with easy access to Regent's Park and Hyde Park.

EPC Rating: D

Energy Efficiency Rating: D

Agents Note: Whilst every care has been taken to prepare these particulars, they are for guidance purposes only. All measurements are approximate and are for general guidance purposes only and whilst every care has been taken to ensure their accuracy, they should not be relied upon and potential buyers/tenants are advised to recheck the measurements.

<http://www.newingtonstates.com>