



Price
£750,000

Freehold

4x  2x  3x 

**Whitepost Lane,
Culverstone, Meopham,
Kent, DA13**

OVER 60?

Secure this property
for up to **59% less!**

Wards
Helping you move forwards

Accommodation

GROUND FLOOR

Entrance Hall

Cloakroom: 6'0 x 5'3 (1.83m x 1.60m)

Study: 12'0 x 8'8 (3.66m x 2.64m)

Kitchen/Breakfast Room : 25'8 x 8'0 (7.83m x 2.44m)

Lounge: 18'5 x 11'6 (5.62m x 3.51m)

Snug: 11'0 x 10'11 (3.36m x 3.33m)

Dining Room: 10'10 x 10'2 (3.30m x 3.10m)

Conservatory: 22'1 x 14'4 (6.74m x 4.37m)

FIRST FLOOR

Landing

Bedroom 1: 25'9 x 8'0 (7.85m x 2.44m)

Bedroom 2: 11'0 x 10'6 (3.36m x 3.20m)

Ensuite Shower Room: 8'0 x 7'1 (2.44m x 2.16m)

Bedroom 3: 11'0 x 10'11 (3.36m x 3.33m)

Bedroom 4: 11'0 x 10'2 (3.36m x 3.10m)

Bathroom: 8'6 x 8'3 (2.59m x 2.52m)

OUTSIDE

Garage: 18'0 x 8'9 (5.49m x 2.67m)

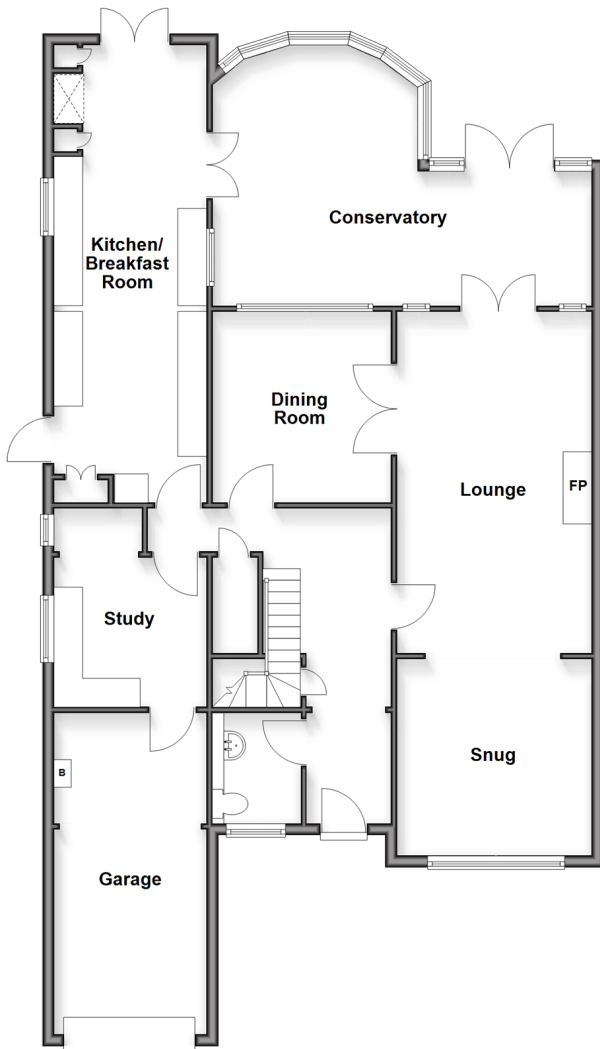
Driveway

Front Garden

Rear Garden

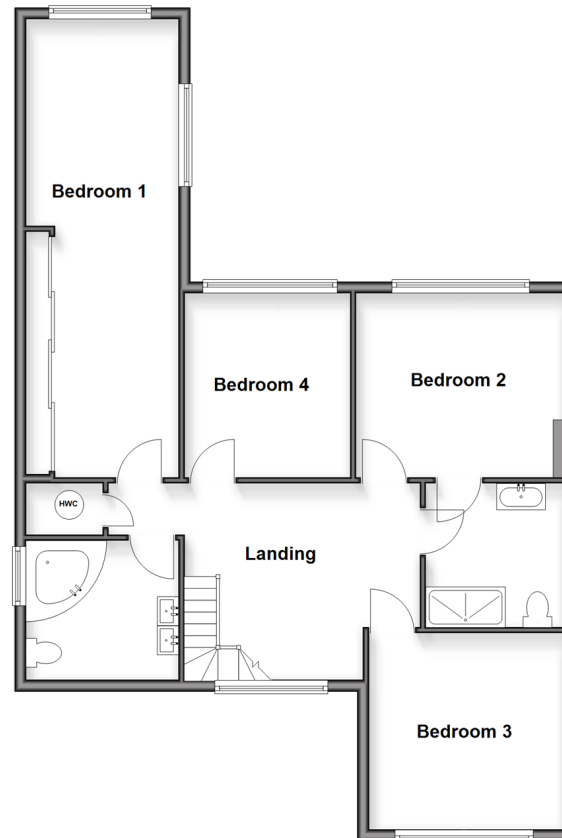
Ground Floor

Approx. 130.2 sq. metres (1401.5 sq. feet)



First Floor

Approx. 84.0 sq. metres (904.6 sq. feet)





Main features

- Welcoming private driveway with plenty of space, leading straight to the garage
- Bright, open family areas plus a handy study that's perfect for home working
- Comfortable, well-sized bedrooms, with an ensuite shower room
- Smart rear extension flowing out to a landscaped garden
- Great spot for popular local schools



Nearest Schools

Primary and Secondary Schools: Culverstone Green Primary 0.4 miles, Vigo Village School 0.5 miles, Trottiscliffe C of E Primary 1.3 miles, Meopham School 2.2 miles, Helen Allison School 2.7 miles, Wrotham School 3.1 miles, Grange Park School 3.4 miles



Transport Information

Train Stations: Sole Street 3.3 miles, Meopham 3.4 miles, Borough Green & Wrotham 3.6 miles



Address

Whitepost Lane, Culverstone, Meopham, Kent, DA13



Directions

For directions to this property please contact us.



Wards
Helping you move forwards

Call Meopham Branch 01474 813100 ■ wardsofkent.co.uk



■ Through a Homewise Home For Life Plan people aged 60+ can secure this property for up to 59% less, by purchasing a Lifetime Lease



13326266/20260408/SB/KD