



## Beechwood Grove, W3

£175,000

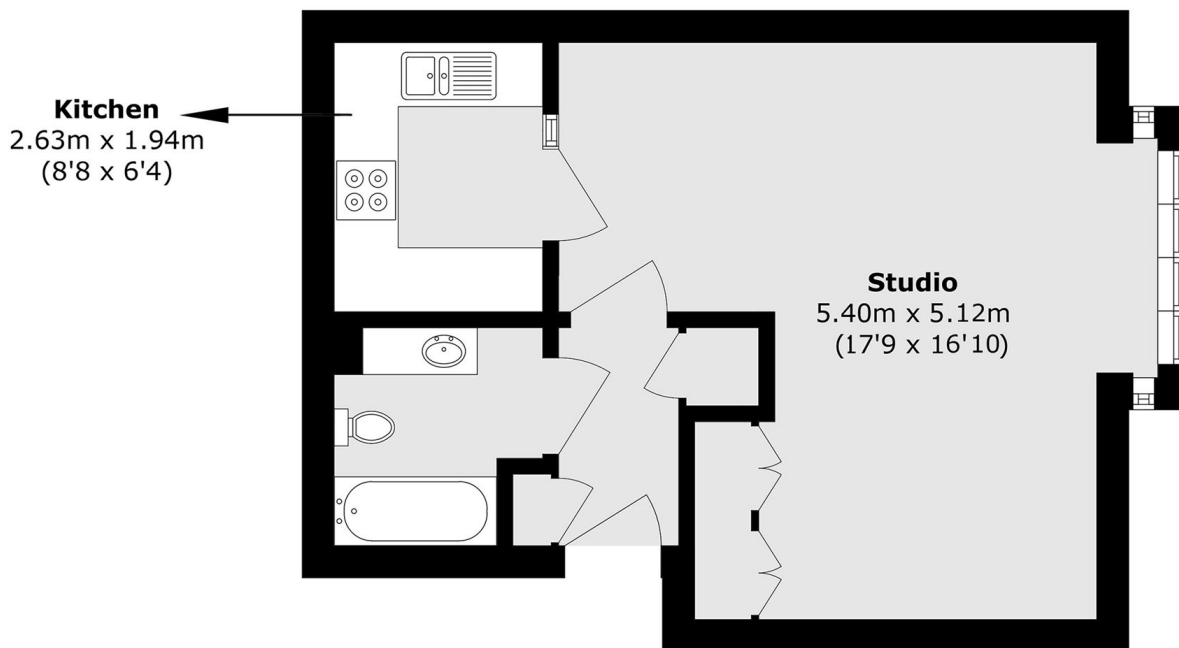
Over 55's only. Situated within a private development close to Acton Park, this studio apartment has lift access, a residents' lounge and private allocated parking.

Half a mile from East Acton tube station (Central line) and Acton Central station (Overground). The 70 bus route stops just outside the development.

### Features

Over 55's  
Lift Access  
Communal Lounge  
Attractive Communal Gardens  
24 Hour Security System  
Resident Caretaker

# Beechwood Grove, London, W3



Total area (approx.): 37.1 sq. m (399.3 sq. ft)