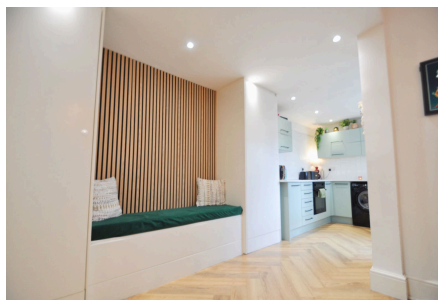


## Wentworth Avenue, New Brighton

£225,000 | Council Tax Band A | EPC Rating D

 3  1  2



This simply stunning three-bedroom mid row home offers tasteful décor, and a lovely mix of original features and modern upgrades throughout. This would make a great family home with the open plan kitchen dining area and bonuses like a downstairs WC. Situated only a short walk to handy corner shops, Vale Park, the promenade, good bus services, Excellent local schooling and the great range of amenities in both Liscard and New Brighton. Interior: inviting hallway, WC, living room with feature log burner and open plan dining/sitting/kitchen area on the ground floor. Off the first-floor landing there are the three bedrooms and a stylish refitted family bathroom. Complete with uPVC double glazing and gas central heating with a boiler upgraded within the past 6 months. Exterior: lovely rear garden area. Be quick!

## Key Features

- Mid Row Home
- Open Plan Dining Kitchen
- Log Burner
- Dbl Glazing & GCH
- Council Tax Band A
- Three Bedrooms
- Downstairs WC
- Lovely Rear Garden
- Recently Installed Boiler
- EPC Rating D

