

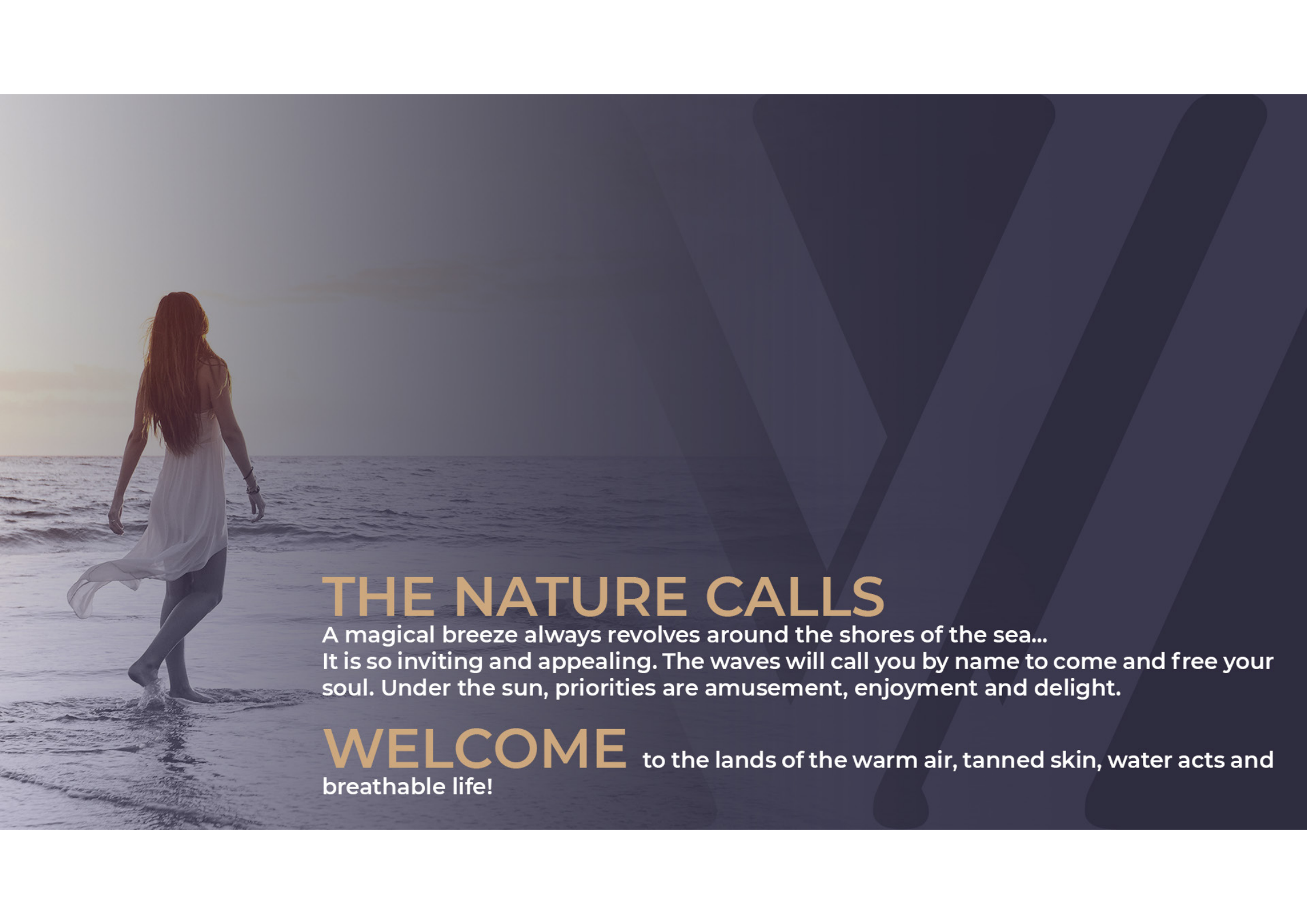


THE VIEW  
RESIDENCE  
HURGHADA



“ WELCOME TO THE LAND OF MORNING STARS ”





# THE NATURE CALLS

A magical breeze always revolves around the shores of the sea...  
It is so inviting and appealing. The waves will call you by name to come and free your soul. Under the sun, priorities are amusement, enjoyment and delight.

**WELCOME** to the lands of the warm air, tanned skin, water acts and  
breathable life!



# HURGHADA

Back in time, nature called fishermen to re-locate and live by the Red Sea. In time this specific territory became a habitat for people and families from various locations due to the nature surrounding.

The calm waters, sunny weather, mountains sight and the soul-feeding breeze made Hurghada gain reputation locally and globally. Egyptians started to consider Hurghada as a new vacation gateway in winter while people all around the world aimed to Hurghada all year long to enjoy Nature's temptations and entertaining sea activities.

**Now**, the city holds thousands of residents of several nationalities and attains a large number of tourists every single year.





# THE VIEW

Believing in nature's calls, the seaside residential & touristic project is designed to match the vibe and feel of the city. The project is centralized in the middle of the city on the highest cliff to oversee a whole view of the Red Sea with a panoramic 360° views.

Besides the residential theme, The View also proposes hotel serviced suites operating all year along. The View is proposing all the amusing desires in one place that fulfils mind, body and soul starting with the view itself, water & on-ground activities and premium amenities.



EGYPTIAN KUWAITI  
DEVELOPERS

## ABOUT THE DEVELOPER

**Egyptian Kuwaiti Developers**, an investment and development entity with a massive experience that exceeds 40 years in Egypt and MENA region.

The entity is known for its diverse investments across several industries including Real Estate Development, Real Estate Leasing, Touristic Development and Commercial Investment.

Throughout the years, **EKD** succeeded to establish 20+ projects as a developer and 40+ projects as a contractor over an area that exceeds 2 million square meters. Moreover, the group has robust expertise in the Red Sea Developments with proven and solid projects portfolio that is not limited to

- Hurghada, The View
- Hurghada, Esplanada
- Marina Hurghada Resort
- Hurghada Marriott Beach Resort Hotel

The dedication, commitment and quality-driven traits always guarantee the advancement of the entity.



# AMENITIES & FACILITIES

---



## Exteriors

The exteriors shape an integrated combination of urban and oriental designs that matches the halo of the city. The leveled base of the project assures an architectural beauty that overlooks the Red Sea.

---

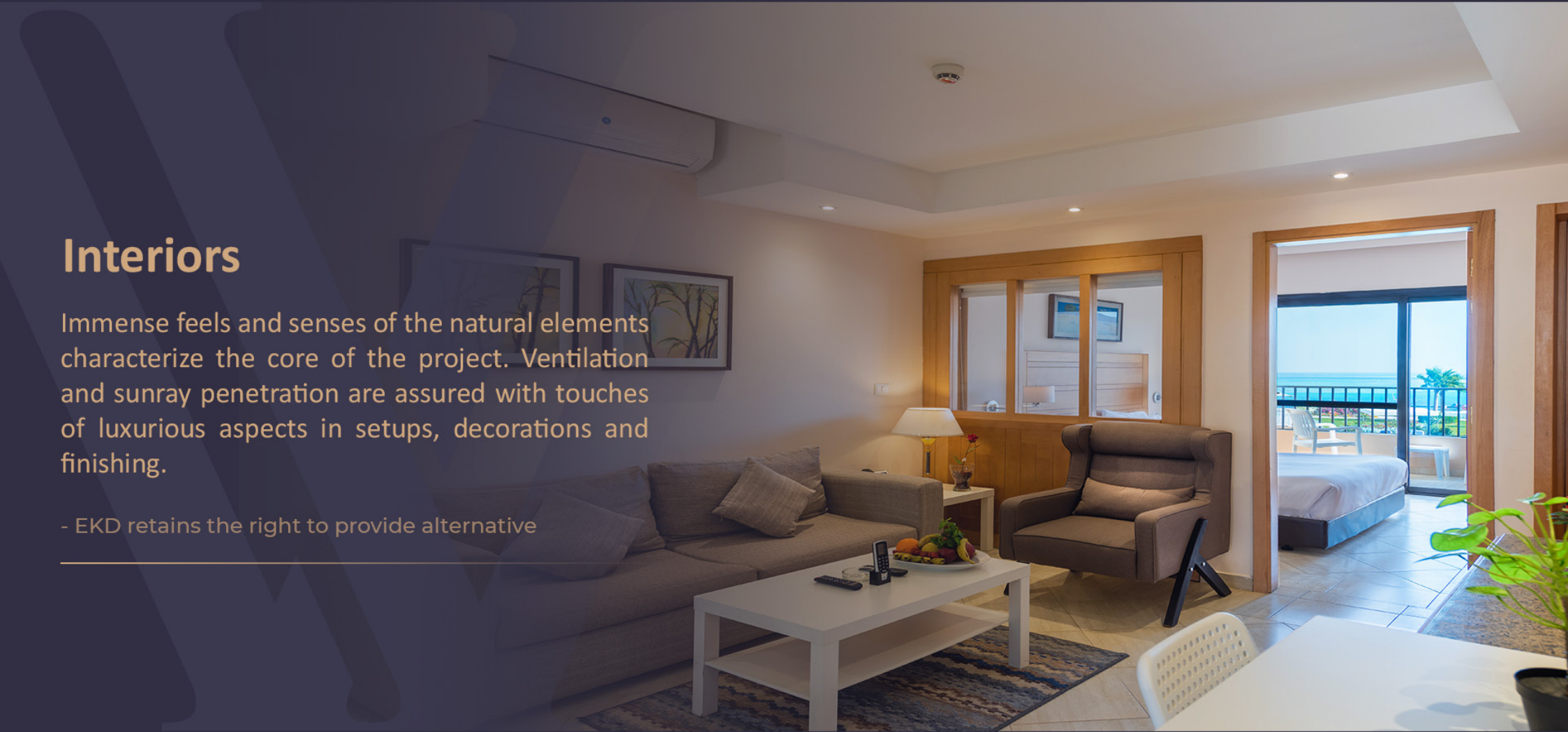




# Interiors

Immense feels and senses of the natural elements characterize the core of the project. Ventilation and sunray penetration are assured with touches of luxurious aspects in setups, decorations and finishing.

- EKD retains the right to provide alternative





# Private Beach

Exclusive beach access for the residents  
to enjoy the whole day by the sea .

---





# Clubhouse

Where the family gathers to enjoy  
the sunrays, endless conversations  
and meals .

---







## Beach Bar and Restaurant

The premium quality of drinks and meals all day long. Enjoy an international cuisine of all of your preferred plates and Beverages.

---



# Swimming Pools

Enjoy a full chilling experience at different pools with various views .

---



## Kids Area

Kids Area is the perfect place for the young energetic souls. Let them enjoy their time with numerous activities within a safe surrounding.

---





## Commercial strip

A commercial zone occupied by a large set of local and international brands and tenants. Every single need is attainable and available at The View's commercial .

---



## Fitness Center

Never miss your workout on vacations.  
A fully-equipped fitness center is always  
set for your favor .

---





# Lightened Playgrounds

The perfect place for the young energetic souls. Let them enjoy their time with numerous activities within a safe surrounding .

---



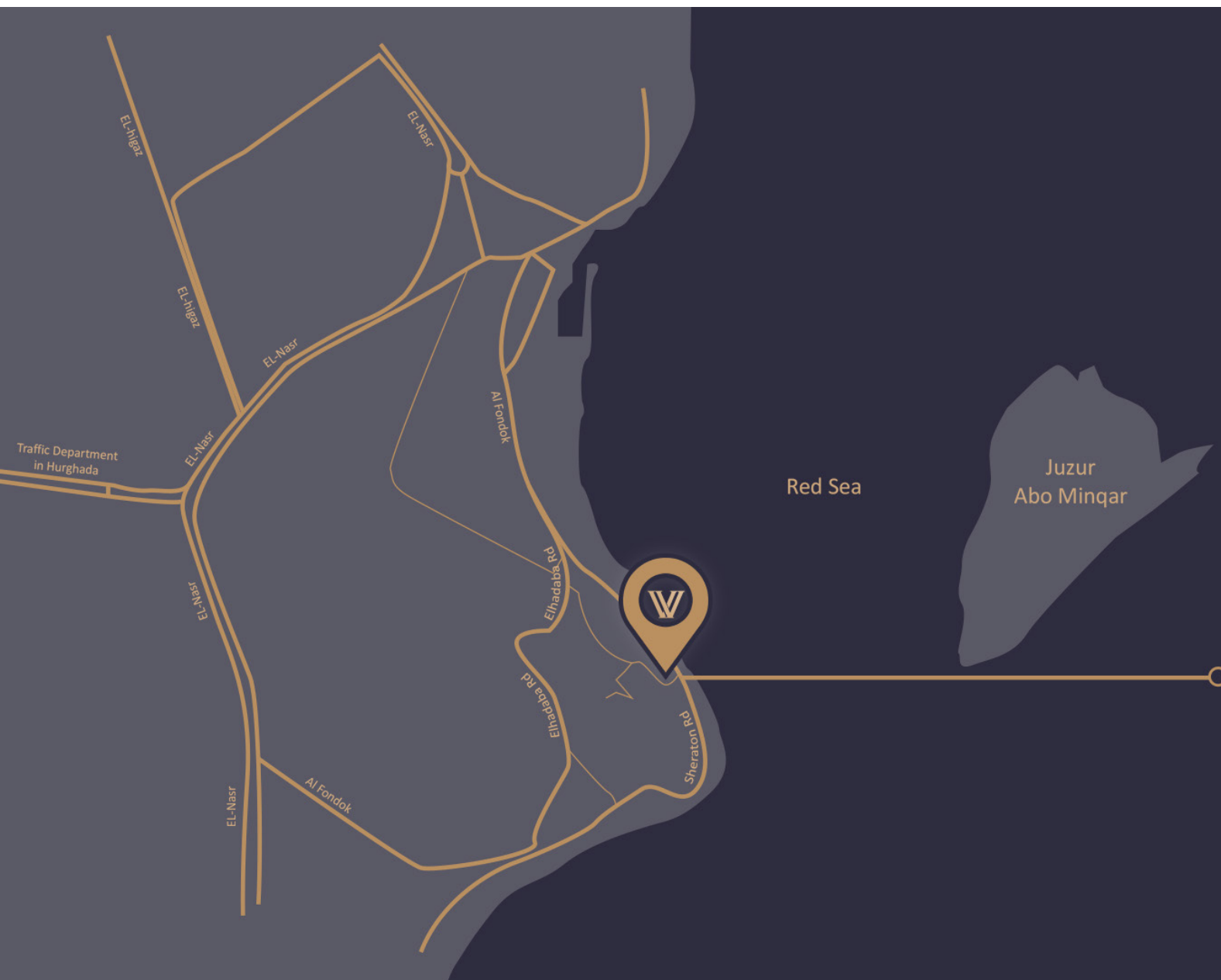
# Electric Cars Charging Station

A one of a kind charging station specified for the nature keepers. Available 24 / 7 to charge your electric vehicles .

---





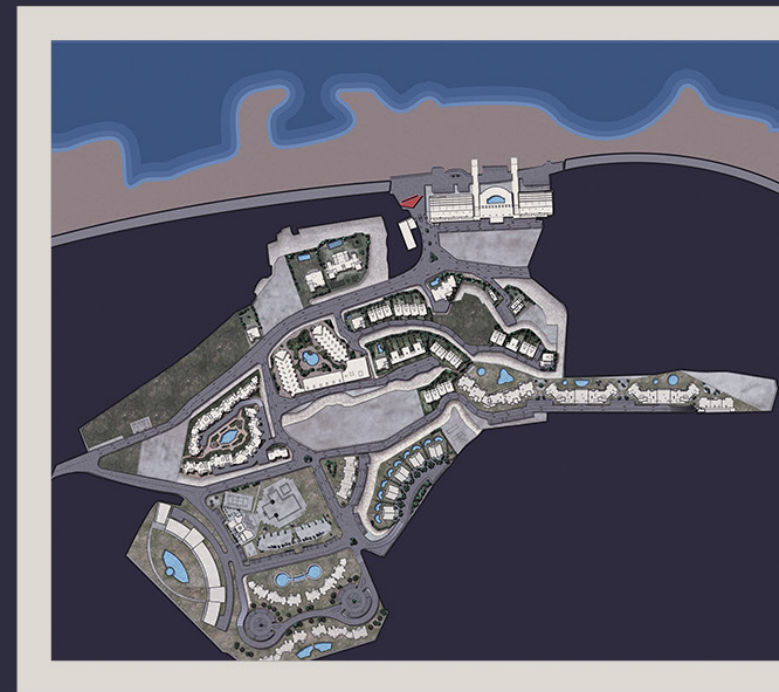
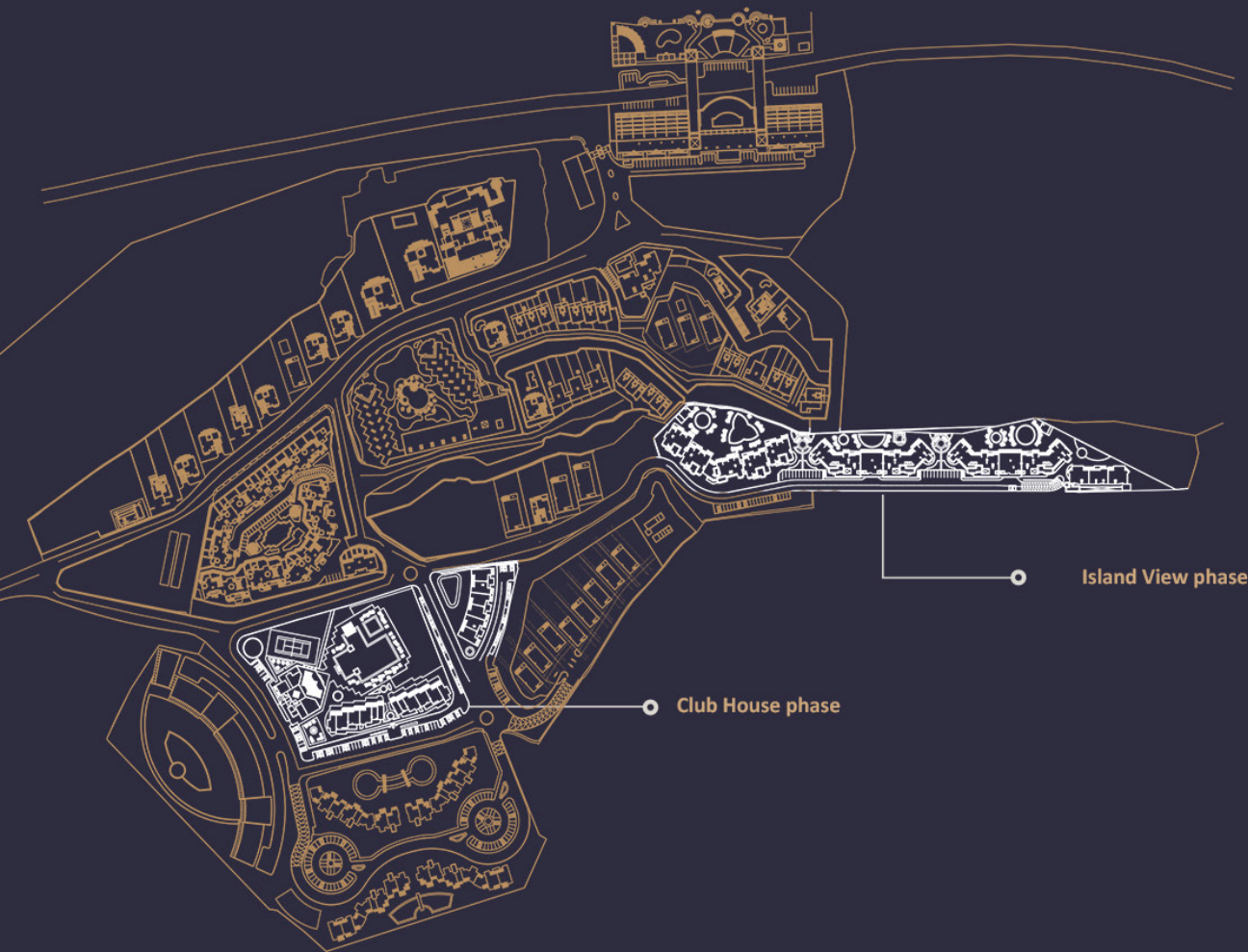


# LOCATION

Located in the middle of the city and close to major cities of Egypt.

- Marsa Alam - 289 KM
- Luxor - 303 KM
- Cairo - 463 KM
- Alexandria - 680 KM





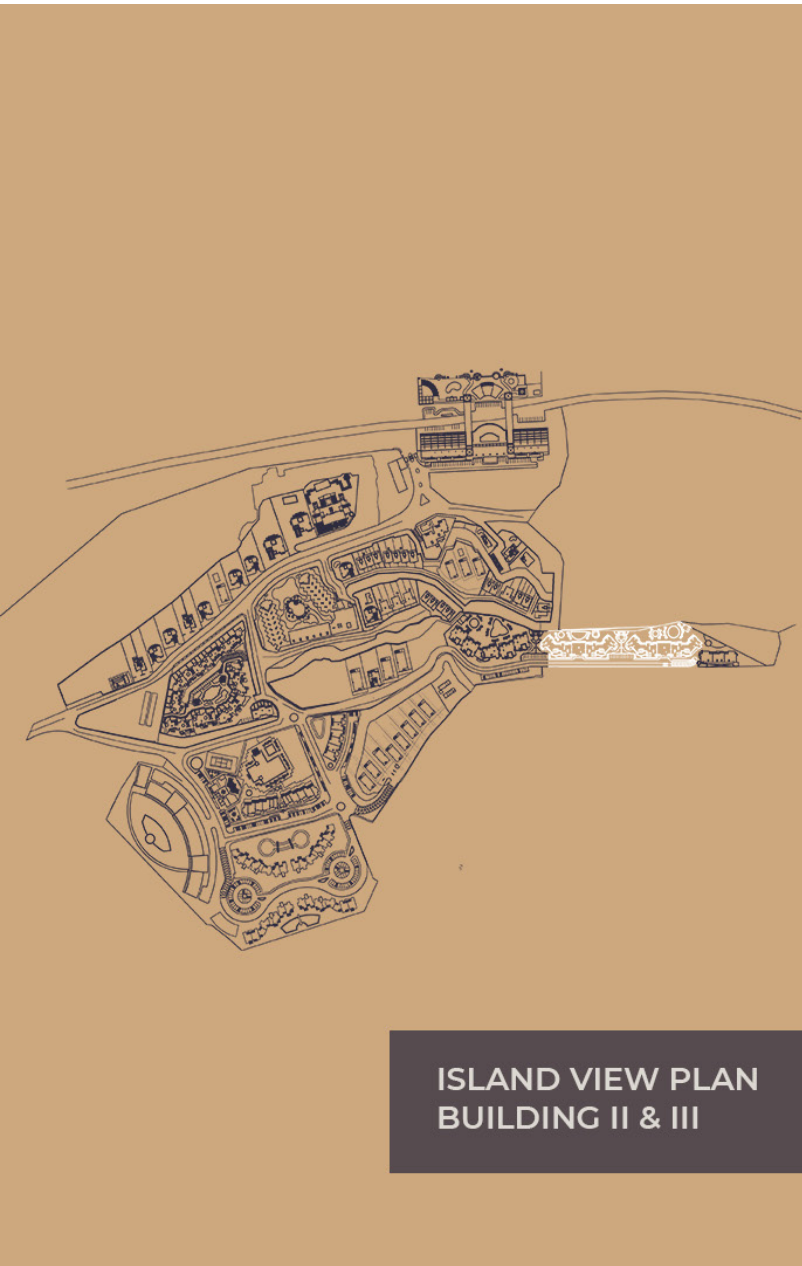
MASTER PLAN

# ISLAND VIEW

“ The apartment centralized phase presents a one of a kind view and feeling by being so immersed in the senses of the sea, sky and sand ”

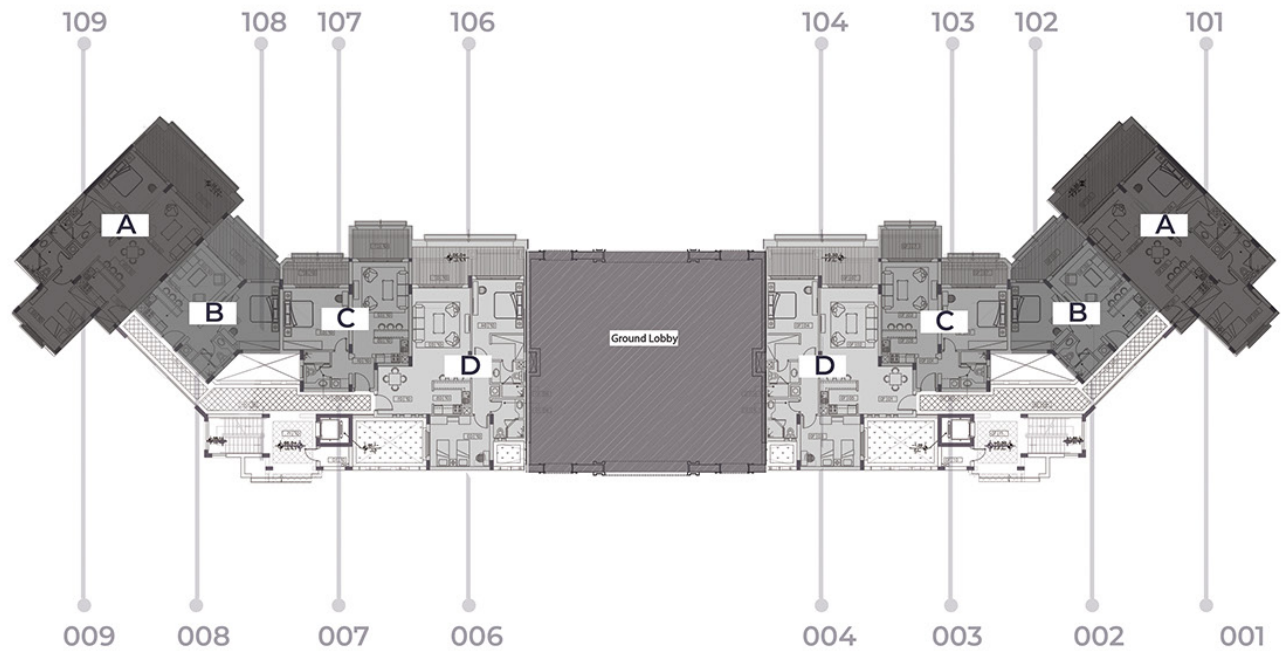




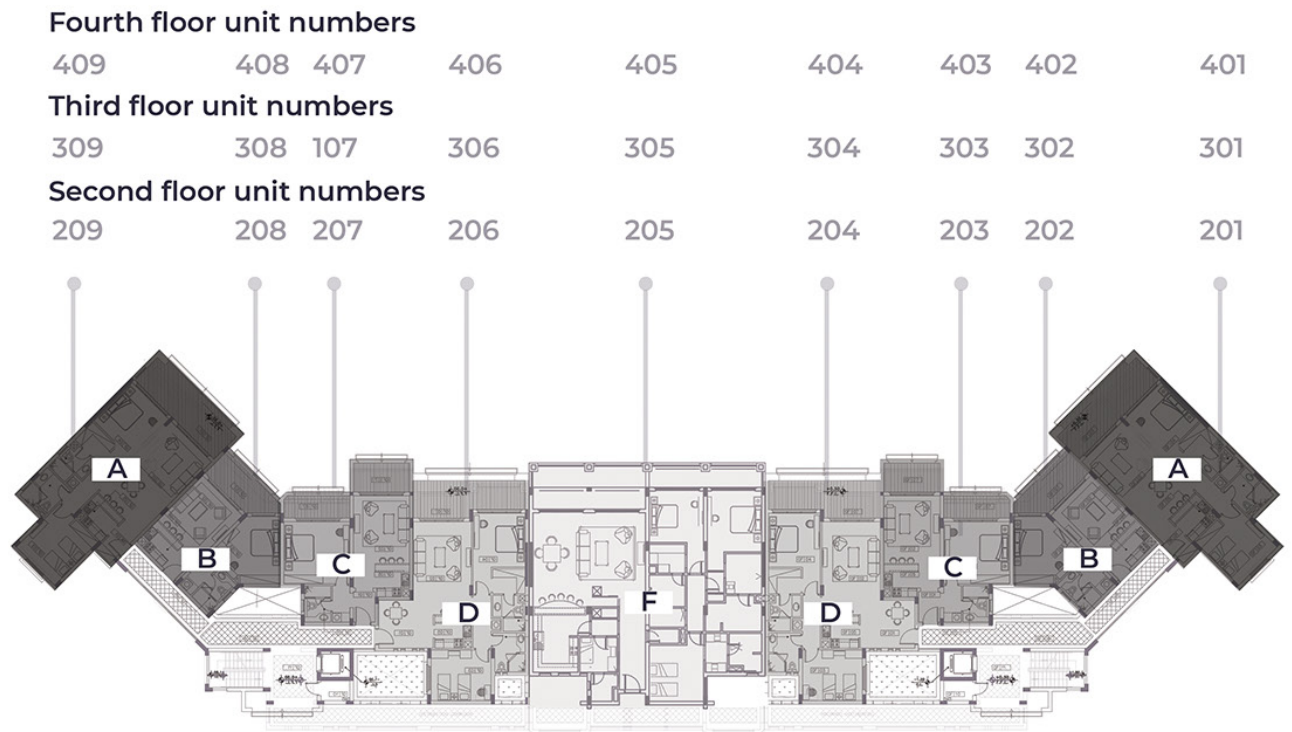
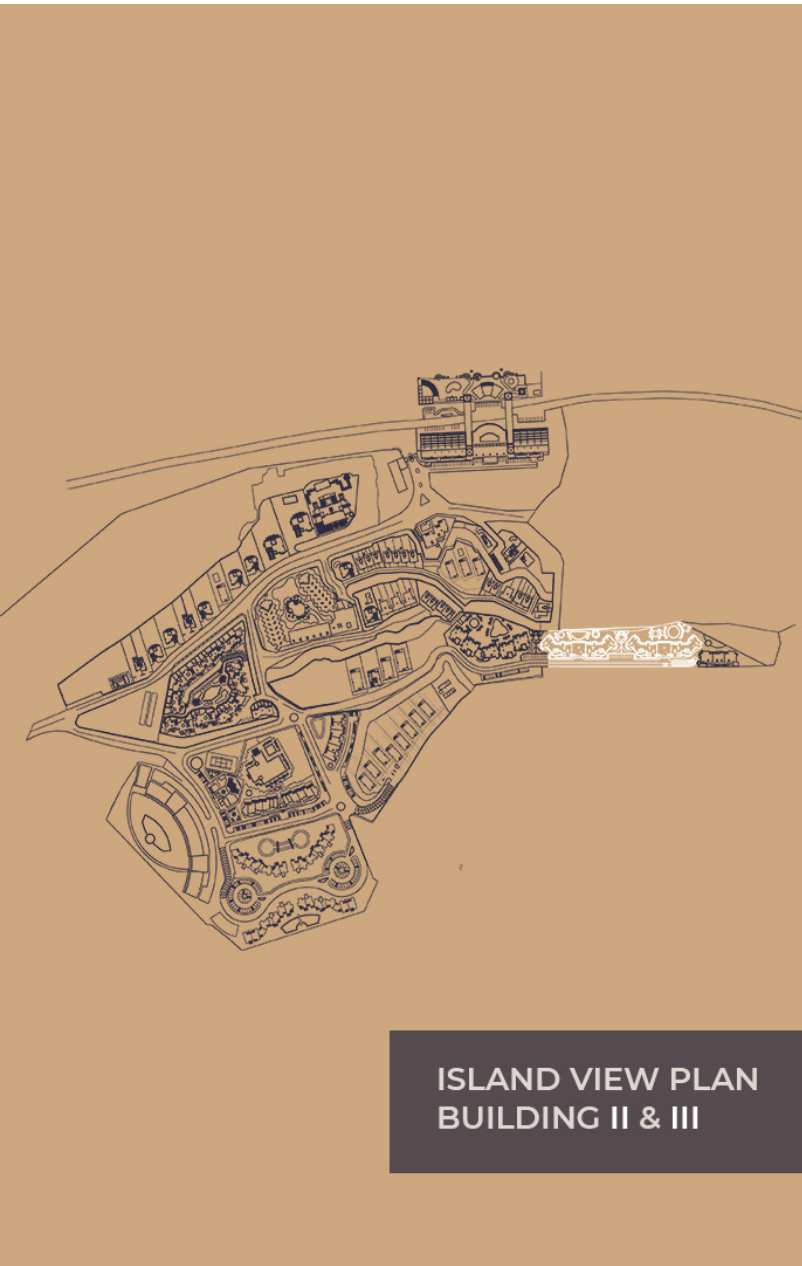


ISLAND VIEW PLAN  
BUILDING II & III

First floor unit numbers



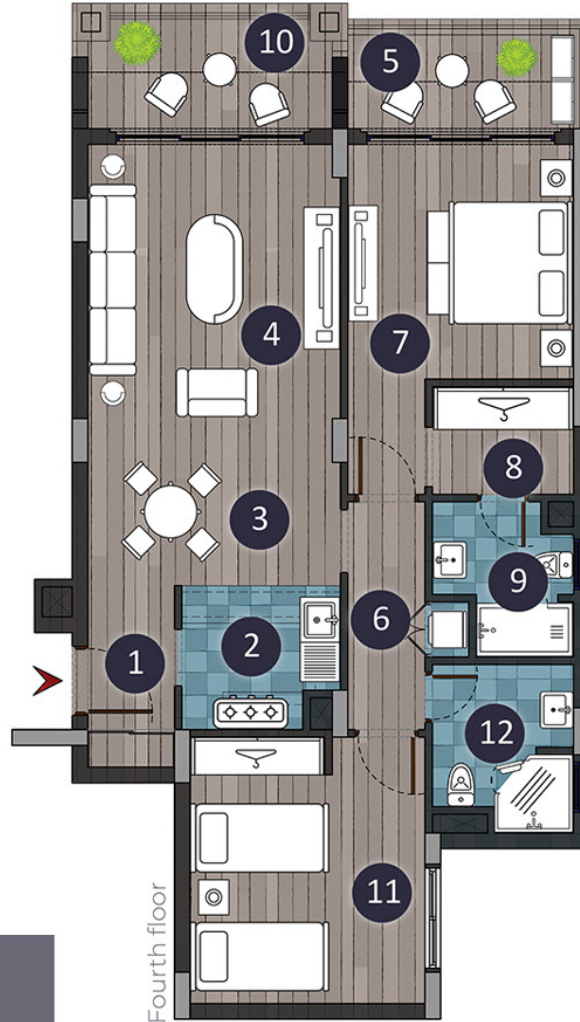
Ground floor unit numbers



## TYPE A

# ISLAND VIEW PLAN BUILDING II & III

## ISLAND VIEW PLAN BUILDING II & III



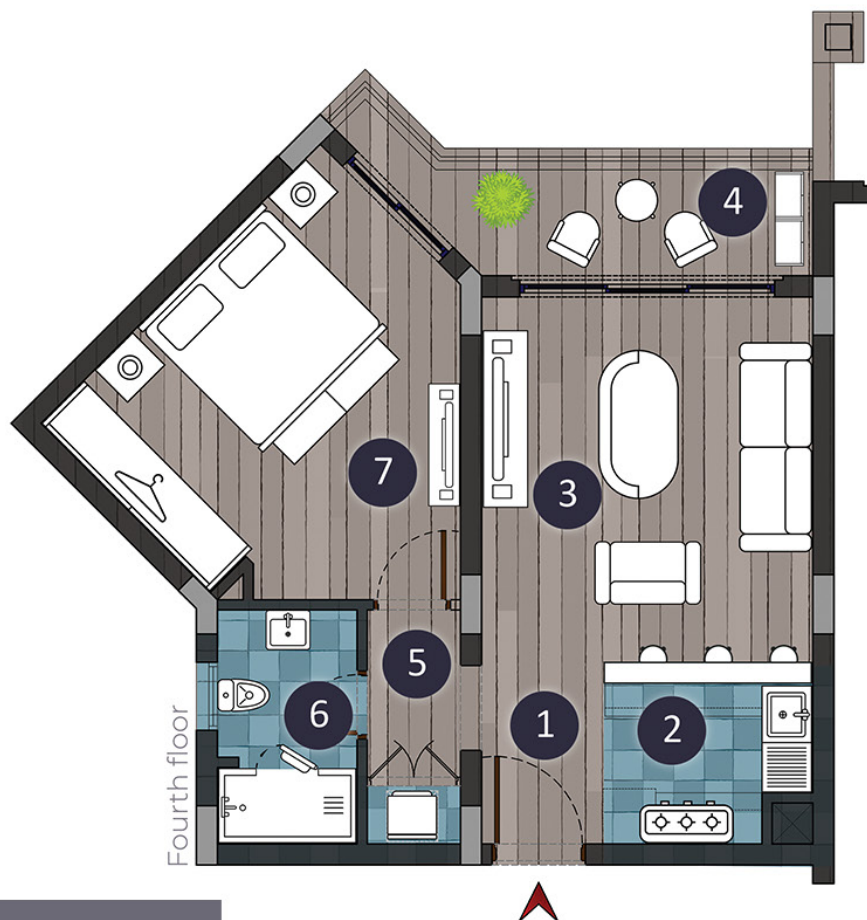
1	ENTRANCE	2.60 X 2.00
2	KITCHEN	2.60 X 2.30
3	DINING AREA	4.21 X 2.30
4	LIVING AREA	4.21 X 4.86
5	TERRACE 1	4.21 X 2.14
6	CORRIDOR	3.71 X 1.35
7	M.BEDROOM	4.54 X 3.91
8	DRESSING ROOM	2.55 X 1.84
9	M.BATHROOM	2.60 X 2.56
10	TERRACE 2	3.90 X 1.90
11	BEDROOM	4.25 X 4.48
12	BATHROOM	2.56 X 2.97

	Total Area	Unit Numbers
Ground floor	: 160.5 m <sup>2</sup>	( 001 - 009 )
First floor	: 157.5 m <sup>2</sup>	( 101 - 109 )
Second floor	: 149 m <sup>2</sup>	( 201 - 209 )
Third floor	: 146.2 m <sup>2</sup>	( 301 - 309 )
Fourth floor	: 148 m <sup>2</sup>	( 401 - 409 )



## TYPE B

# ISLAND VIEW PLAN BUILDING II & III



1	ENTRANCE	2.80 X 1.58
2	KITCHENETTE & DINING AREA	2.80 X 2.58
3	LIVING AREA	4.00 X 4.15
4	TERRACE	5.40 X 1.65
5	CORRIDOR	3.07 X 1.29
6	BATHROOM	3.07 X 1.96
7	BEDROOM	5.03 X 3.96

	Total Area	Unit Numbers
Ground floor	: 91 m <sup>2</sup>	( 002 - 008 )
First floor	: 89 m <sup>2</sup>	( 102 - 108 )
Second floor	: 89 m <sup>2</sup>	( 202 - 208 )
Third floor	: 89 m <sup>2</sup>	( 302 - 308 )
Fourth floor	: 84 m <sup>2</sup>	( 402 - 408 )

## ISLAND VIEW PLAN BUILDING II & III

# TYPE C

## ISLAND VIEW PLAN BUILDING II & III



1	ENTRANCE	1.87 X 2.39
2	KITCHENETTE & DINING AREA	4.28 X 2.08
3	LIVING AREA	4.28 X 4.83
4	TERRACE 1	4.40 X 1.77
5	CORRIDOR	2.83 X 1.38
6	BEDROOM	4.80 X 4.56
7	BATHROOM	2.84 X 2.11
8	TERRACE 2	2.20 X 3.20

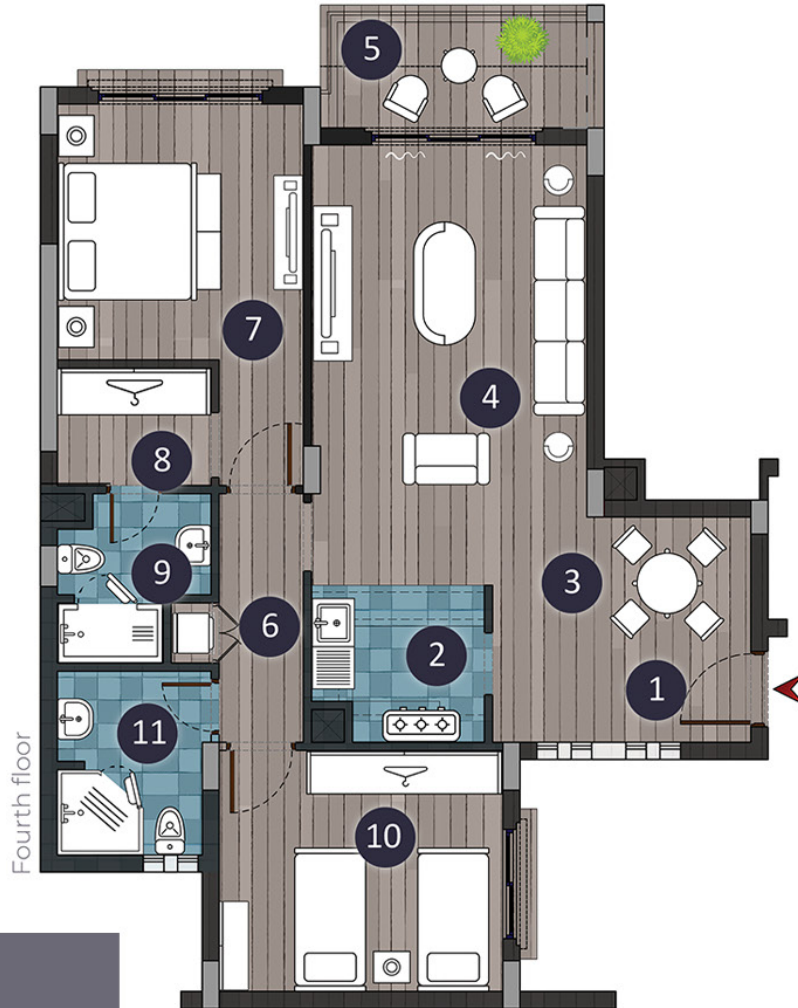
	Total Area	Unit Numbers
Ground floor	: 109 m <sup>2</sup>	( 003 - 007 )
First floor	: 106 m <sup>2</sup>	( 103 - 107 )
Second floor	: 102.5 m <sup>2</sup>	( 203 - 207 )
Third floor	: 99 m <sup>2</sup>	( 303 - 307 )
Fourth floor	: 100.5 m <sup>2</sup>	( 403 - 407 )

## ISLAND VIEW PLAN BUILDING II & III



## TYPE D

# ISLAND VIEW PLAN BUILDING II & III



1	ENTRANCE	1.85 X 4.00
2	KITCHEN	2.40 X 2.70
3	DINING AREA	1.83 X 4.00
4	LIVING AREA	6.18 X 4.21
5	TERRACE	1.90 X 4.21
6	CORRIDOR	3.78 X 1.35
7	M.BEDROOM	4.73 X 3.91
8	DRESSING ROOM	2.57 X 1.85
9	M.BATHROOM	2.57 X 2.60
10	BEDROOM	3.84 X 4.60
11	BATHROOM	3.04 X 2.50

	Total Area	Unit Numbers
Ground floor	: 166 m <sup>2</sup>	( 004 - 006 )
First floor	: 163 m <sup>2</sup>	( 104 - 106 )
Second floor	: 163 m <sup>2</sup>	( 204 - 206 )
Third floor	: 151 m <sup>2</sup>	( 304 - 306 )
Fourth floor	: 144.5 m <sup>2</sup>	( 404 - 406 )

## ISLAND VIEW PLAN BUILDING II & III

## TYPE F

# ISLAND VIEW PLAN BUILDING II & III



1	ENTRANCE	1.985 X 5.97	12	M.BEDROOM	5.44 X 4.125
2	CORRIDOR 1	1.93 X 2.07	13	DRESSING ROOM	2.79 X 2.89
3	KITCHEN	3.83 X 5.60	14	M.BATHROOM	2.39 X 4.19
4	MAID ROOM	2.55 X 2.72	15	BEDROOM 1	4.48 X 4.00
5	MAID BATHROOM	2.17 X 2.20	16	DRESSING ROOM 1	2.66 X 2.125
6	DINING AREA	6.23 X 3.00	17	BATHROOM 1	2.66 X 2.305
7	LIVING AREA	6.58 X 4.75	18	TERRACE 2	1.82 X 8.126
8	TERRACE 1	3.35 X 8.125	19	BEDROOM 2	4.37 X 4.125
9	GUEST WC	1.12 X 2.68	20	DRESSING 2	3.00 X 1.61
10	CORRIDOR 2	2.66 X 1.42	21	BATHROOM 2	3.00 X 2.56
11	CORRIDOR 3	1.37 X 4.02			

### Total Area Unit Numbers

Second floor	: 334 m <sup>2</sup>	( 205 )
Third floor	: 317.5 m <sup>2</sup>	( 305 )
Fourth floor	: 317.5 m <sup>2</sup>	( 405 )

## ISLAND VIEW PLAN BUILDING II & III



THANK YOU

+201229049361