

19 Charles Melrose Close - Asking Price £350,000

Mildenhall Bury St. Edmunds IP28 7BA

shires
residential



"Consistently providing outstanding service to our clients"

Asking Price £350,000

The Property

Situated in a popular and well-established residential area of Mildenhall, this impressive four-bedroom detached property offers over 1,231 sq.ft. of versatile living space, thoughtfully arranged to suit modern family life. With multiple reception rooms, generously sized bedrooms, and a flowing ground-floor layout, this home provides comfort, practicality, and room to grow.

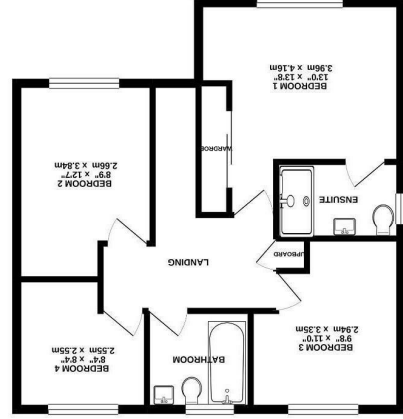
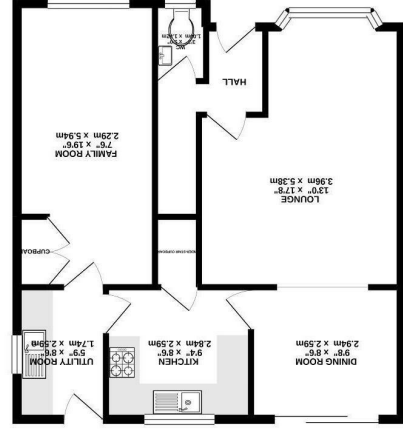
Features

- DETACHED 4 BEDROOM HOME
- THREE RECEPTION ROOMS
- PRIVATE EN SUITE
- MODERN FAMILY BATHROOM
- LARGE KITCHEN
- UTILITY ROOM
- EXPANSIVE FAMILY ROOM
- OFF ROAD PARKING
- GROUND FLOOR WC
- CALL SHIRES TO VIEW



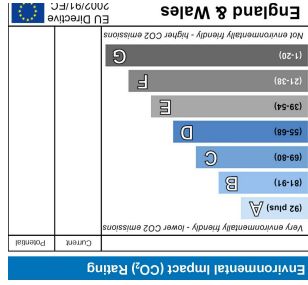
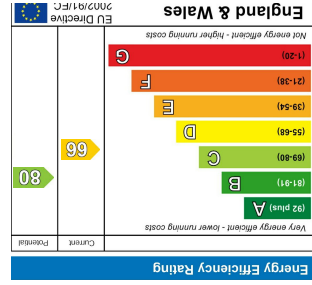


These sales particulars have been produced as a general guide only and we would draw to your attention that we have not carried out a detailed Survey of the property nor have we tested services, appliances or specific fittings. Whilst measurements and statements given within the details are provided in good faith, their accuracy should not be relied upon. If there are any points about which you may be uncertain or would like further clarification, we would suggest that you telephone this office and speak to our staff who will endeavour to assist you.



Whilst every attempt has been made to ensure the accuracy of the foregoing contained herein, measurements of actual dimensions, contents and any other details are approximate and no responsibility is taken for any omission or mis-statement. This plan is for illustrative purposes only and should be used as such by any prospective purchaser. The services, fixtures and appliances shown have not been tested and no guarantee as to their operability or efficiency can be given.

Made with Mapbox ©2024



Shires Residential
4 New Street, Mildenhall, Suffolk, IP28 7EN
T: 01638 712132
E: mildenhall@shiresstatereagents.co.uk
www.shiresresidential.com