

The Ashtons logo is displayed in white text on a dark blue rectangular background in the top right corner of the image.

14 Holly Terrace YO10 4DS

£1,750 Per Month

3



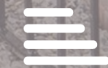
1



1



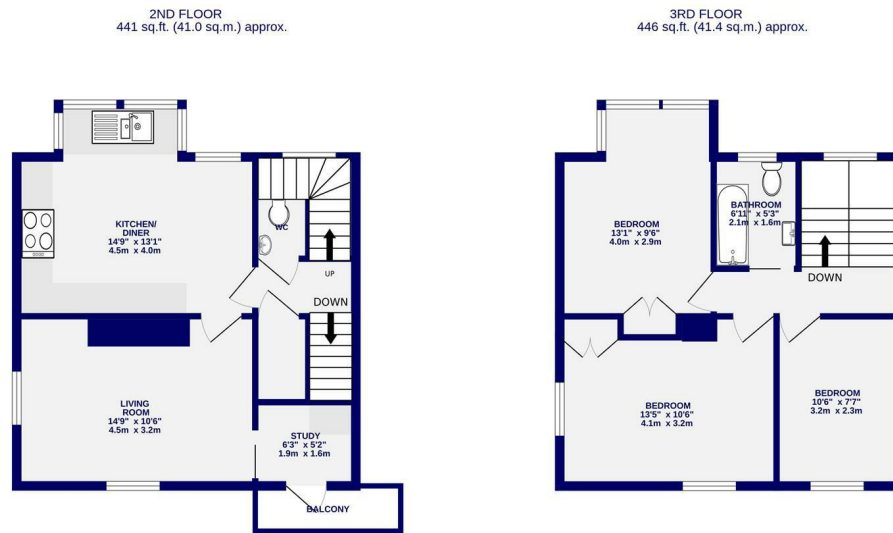
C



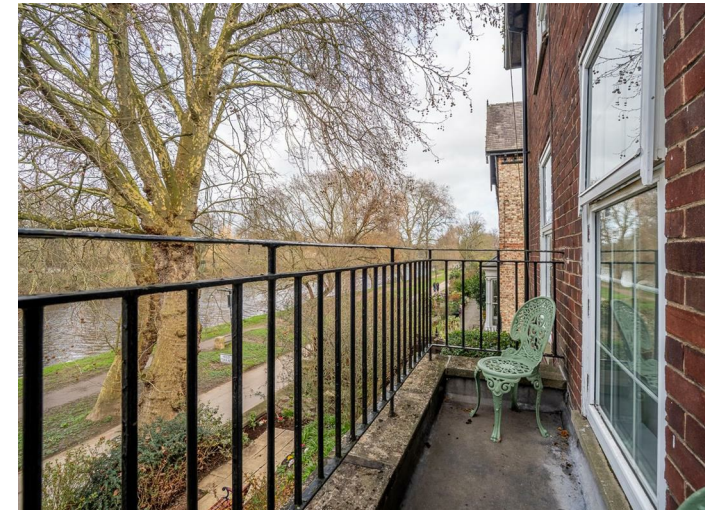
We are pleased to offer to the rental market this recently refurbished three bedroom maisonette with views over the River Ouse and just a short walk from the city centre and easy access to A64 and A19 South. The property is offered on an unfurnished basis and briefly comprises: Entrance hallway with stairs to first floor with lounge with dual aspect windows over the river, office space off the living room with openable window to small balcony, large storage cupboard to the landing and WC, newly fitted breakfasting kitchen with a range of wall and base units, integrated double oven, microwave, hob, washing machine, dishwasher and space for a fridge freezer. To the second floor there are three double bedrooms and house bathroom with shower over. Externally to the front there is a patio area with flower beds and to the rear there is an outhouse storage shed and gated off street parking for 2 cars.

Available now

Deposit £1850 / EPC Rating C / Council Tax Band B



TOTAL FLOOR AREA: 887 sq.ft. (82.4 sq.m.) approx.  
Whilst every attempt has been made to ensure the accuracy of the floorplan, measurements of rooms and any other items are approximate. If included in the plan the garage/shed will form part of the overall floor area and no responsibility is taken for any error, omission or mis-statement. This plan is for illustrative purposes only and should be used as such by any prospective purchaser. The services, systems and appliances shown have not been tested and no guarantee as to their operability.  
Made with Metropix ©2026



Ashtons Lettings



01904 731404



lettings@ashtonsnet.com

