



# Fernhead Road

London, W9

£2,350 per month  
(£542.31 per week)

This fantastic two bedroom apartment is situated on the second floor within this period conversion on a beautiful residential road. Comprises; spacious living room, two double bedrooms, separate kitchen, and bathroom.

**CHESTERTONS**



# Fernhead Road

London, W9

- Two Double Bedrooms
- Just Redecorated
- Great Location
- Separate Kitchen

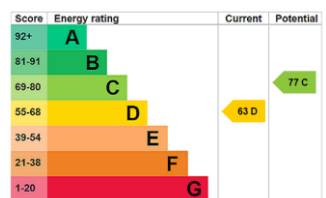


This fantastic two bedroom apartment is situated on the second floor within this period conversion on a beautiful residential road. Comprises; spacious living room, two double bedrooms, separate kitchen, and bathroom.

This stunning apartment further benefits; wooden flooring, abundance of space and light throughout and an eat in kitchen.

Fernhead Road is ideally situated moments from Queens Park underground and over ground stations and close to local amenities.

**Minimum Term:** 12 months  
**Deposit Required:** 5 weeks  
**Local Authority:** City of Westminster  
**Council Tax Band:** E  
**EPC Rating:** D  
**Furnished**

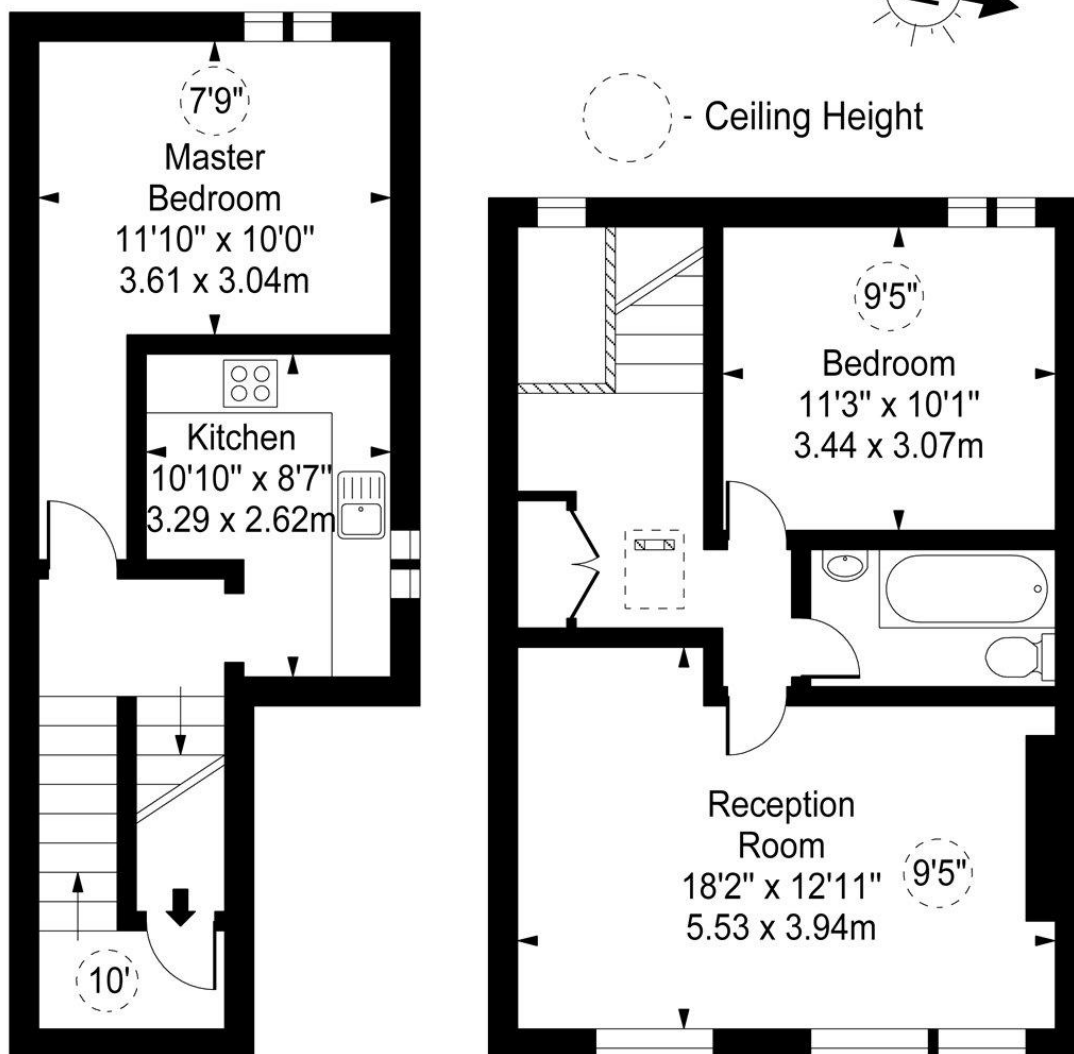
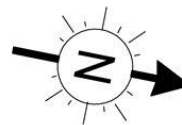


### *Chestertons Little Venice Lettings*

26 Clifton Road  
Maida Vale  
London  
W9 1SX  
littlevenicelettingsusers@chestertons.co.uk  
02072662369  
chestertons.co.uk

Additional tenant charges apply (fees apply to non-AST tenancies only)  
Tenancy Agreement Fee: £300  
References per Tenant/Guarantor: £60  
Inventory check (approx. £100 – £250 inc. VAT)  
chestertons.co.uk/property-to-rent/applicable-fees

# Fernhead Road, W9



First Floor  
Entrance

Top Floor

Approx Gross Internal Area **795 Sq Ft - 73.85 Sq M**

For Illustration Purposes Only - Not To Scale

[www.goldlens.co.uk](http://www.goldlens.co.uk)

Ref. No. 012575AG

