



Andrews Road, £475,000

- DETACHED FAMILY HOME
- NO ONWARDS CHAIN
- DESIRABLE LOCATION
- DRIVEWAY AND GARAGE
- EPC Rating: C



4 2 1



About the property

Situated at the end of a quiet no-through road in the highly desirable area of Llandaff North, and just a short walk from Hailey Park and the Taff Trail, this modern four-bedroom detached home by Bellway Homes offers an excellent family living environment.

Well-presented throughout, the property is bright, spacious, and well maintained. The accommodation begins with a welcoming entrance hallway, leading to a useful cloakroom, a generous living room with a window allowing plenty of natural light, and a stylish open-plan kitchen/dining area to the rear. French doors provide direct access to the garden, creating an ideal space for both everyday living and entertaining.

To the first floor, there are four well-proportioned bedrooms, including a master bedroom with en-suite shower room, along with a family bathroom.

Externally, the property benefits from a driveway providing off-road parking and a single garage. The rear garden is level, enclosed, and designed for ease of maintenance, perfect for outdoor seating and entertaining.

Llandaff North is a popular village-style location in North Cardiff, particularly appealing to families thanks to its strong school catchment, excellent local amenities, and convenient transport links. The A470, A48, and M4 are all easily accessible, while Cardiff City Centre is within easy reach. Llandaff North train station is also close by along with bus services.



Accommodation

Living Room

18' 1" x 10' 10" (5.51m x 3.30m)

Kitchen/Diner

18' 9" x 14' 10" (5.71m x 4.52m)

Bedroom 1

15' 4" x 10' 3" (4.67m x 3.12m)

Bedroom 2

12' x 8' 2" (3.66m x 2.49m)

Bedroom 3

10' 4" x 8' 8" (3.15m x 2.64m)

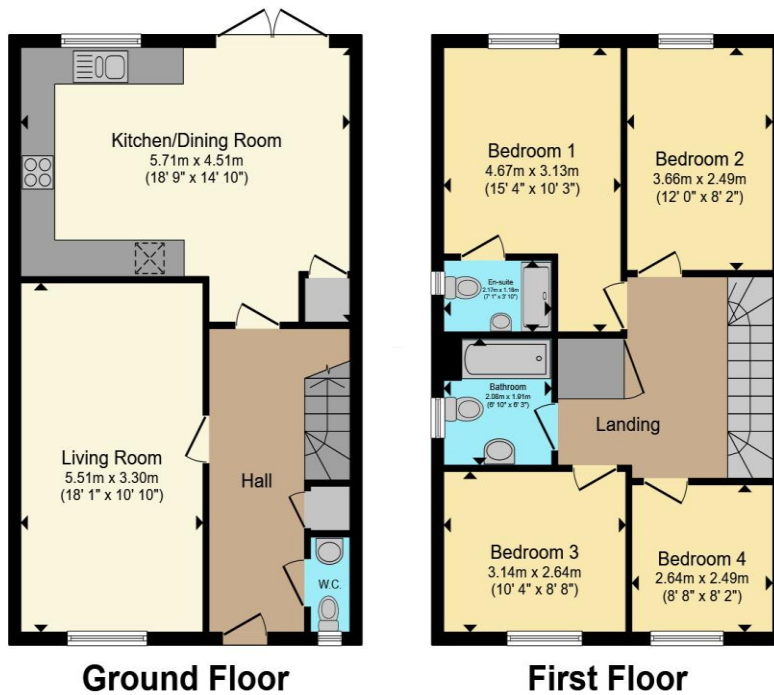
Bedroom 4

8' 8" x 8' 2" (2.64m x 2.49m)

02920 612328

whitchurch@peteralan.co.uk

Floorplan



Total floor area 111.4 m² (1,199 sq.ft.) approx

This floor plan is for illustrative purposes only. It is not drawn to scale. Any measurements, floor areas (including any total floor area), openings and orientation are approximate. No details are guaranteed, they cannot be relied upon for any purpose and they do not form part of any agreement. No liability is taken for any error, omission or misstatement. A party must rely upon its own inspection(s). Powered by www.propertybox.io



Important Information

Note while we endeavour to make our sales details accurate and reliable, if there is any point which is of particular interest to you, please contact the office and we will be pleased to confirm the position for you. We have not personally tested any apparatus, equipment, fixtures, fittings or services and cannot verify they are in working order or fit for their purposes. Nothing in these particulars is intended to indicate that carpets or curtains, furnishings or fittings, electrical goods (whether wired or not). Gas fires or light fittings or any other fixtures not expressly included form part of the property offered for sale. This computer generated Floorplan, if applicable, is intended as a general guide to the layout and design of the property. It is not to scale and should not be relied upon for dimensions. Tenure: We cannot confirm the tenure of the property as we have not had access to the legal documents. The buyer is advised to obtain verification from their solicitor or surveyor.

Peter Alan Limited is registered in England and Wales under company number 2073153, Registered Office is Cumbria House, 16-20 Hockliffe Street, Leighton Buzzard, Bedfordshire, LU7 1GN. VAT Registration Number is 500 2481 05. For activities relating to regulated mortgages and non-investment insurance contracts, Peter Alan Limited is an appointed representative of Connells Limited which is authorised and regulated by the Financial Conduct Authority. Connells Limited's Financial Services Register number is 302221. Most buy-to-let

