



## Summer Gardens, KT8

£1,595,000

**Dexters**



## Summer Gardens, KT8

A wonderful example of a beautiful Edwardian house; this five bedroom detached property has a real sense of openness. With views over the playing fields, it makes the ideal family home.

Arranged over three floors and spanning approximately 2750 sq ft, this stunning period home offers generous living space throughout. It features a bay fronted primary reception room with a gas fireplace, while the rear boasts a modern open plan kitchen and dining area ideal for entertaining with bi-fold doors opening onto the garden. A second reception room provides a cosy retreat.

The first floor comprises four bedrooms, including two with an en suites, along with a family bathroom. The top floor offers an additional bedroom with en-suite and a study.

Further benefits include a downstairs WC, utility room, landscaped garden, a garage and solar panels with a Tesla battery and an EV charging point.

Summer Gardens is located close to the boutiques, restaurants and cafés of Hampton Court Village as well as its excellent transport links and selection of great schools. Bushy Park and The Palace are also within easy reach.

### Features

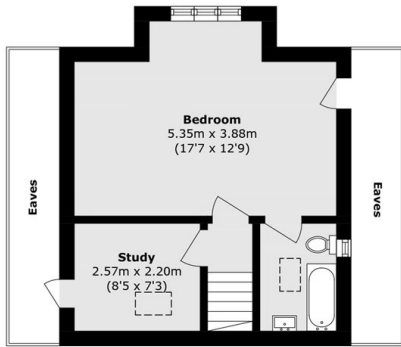
- Five Bedrooms
- Period
- South Facing Garden
- Off Street Parking
- Detached
- Garage



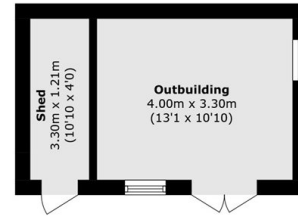




# Summer Gardens, East Molesey, KT8



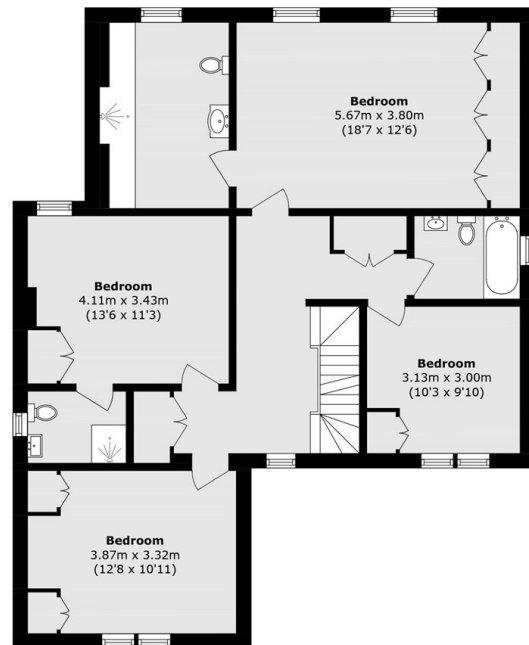
**Second Floor**



**Ground Floor**



**Ground Floor**



**First Floor**

Total (approx.): 255.3 sq. m (2748.0 sq. ft)  
 Outbuilding area (approx.): 17.6 sq. m (189.4 sq. ft)  
 (Excluding Eaves)