

*tavistockbow*

**For Rent**



**People Make Places**



**Catherine Street, Covent Garden WC2**

2 bedrooms | 592 sq ft

£825 pw





Positioned in Covent Garden's Opera Quarter, the stunning two bedroom apartment features two shower rooms and a dual aspect onto Russell and Catherine Streets. Moments from Covent Garden's Piazza and a short walk to LSE and King's, the apartment is modern throughout. Available February unfurnished.

#### What you need to know

- Two double bedrooms
- Two shower rooms
- Refurbished to a high specification
- Secondary glazing
- Wooden flooring
- Unfurnished
- Available mid February
- 1st floor without a lift
- Moments from Covent Garden Piazza
- Close to Covent Garden & Holborn underground stations



**Catherine Street, Covent Garden WC2**





### Overview

On the first floor, of a period building in the Opera Quarter, this two bedroom and two shower room apartment has a contemporary feel. Light beech-style wooden floors are fitted throughout, a smart black kitchen with white worktop is neatly tucked off the living space and cast-iron radiators add to the character. Both bedrooms come with useful storage, while the master bedroom has an ensuite shower room. A further guest shower room is accessible from the hallway and secondary glazing is fitted for tenant comfort.

The apartment is conveniently located near to Aldwych to alight buses services for travel across London and to reach LSE. Underground services are accessible at Covent Garden (Piccadilly Line), Holborn (Central and Piccadilly Lines) and Charing Cross (Bakerloo and Northern Lines) as well as mainline services to London Bridge and out of the Capital, while Central London neighbourhoods like Mayfair, St James's, the South Bank, Holborn and Soho can all be easily reached on foot.

The apartment is available mid February on an unfurnished basis. Subject to contract and satisfactory references, the landlord offers a three-year lease with a mutual rolling six-month break clause.

Westminster Council tax band: D.

**Catherine Street, Covent Garden WC2**



# People Make Places

London is a collection of inspiring urban villages and one of the most exciting places in the world to live, work & play.

We work with both property owners and their occupiers, sharing the story of these vibrant neighbourhoods, conveying the unique soul & energy to future custodians, the people who'll keep them buzzing.

And unlike many real estate businesses we're not just about buildings, because streets & buildings don't make a neighbourhood.

We're about building relationships, because **people make places**.

MISINTERPRETATION ACT (COPYRIGHT) DISCLAIMER: Tavistock Bow Ltd for themselves and for the vendor(s) of this property whose agents they are, given notice that: 1. These particulars do not constitute, not constitute any part of, an offer or contract. 2. None of the statements contained in these particulars as to the property are to be relied on as statements or representations of fact. 3. Any intending purchaser or lessee must satisfy themselves by inspection or otherwise as to the correctness of each of the statements contained in these particulars. 4. The vendor(s) or lessor(s) do not make or give and neither Tavistock Bow Ltd nor any person in their employment has any authority to make or give any representation or warranty whatever in relation to this property. Finance Act 1989, Unless otherwise stated all prices and rents are quote exclusive of VAT. Property Misrepresentation Act 1991; These details are believed to be correct at the time of compilation but may be subject to subsequent amendment.

Follow us:     @tavistockbow

Score	Energy rating	Current	Potential
92+	<b>A</b>		
81-91	<b>B</b>	<b>85 B</b>	<b>85 B</b>
69-80	<b>C</b>		
55-68	<b>D</b>		
39-54	<b>E</b>		
21-38	<b>F</b>		
1-20	<b>G</b>		

Catherine Street, WC2

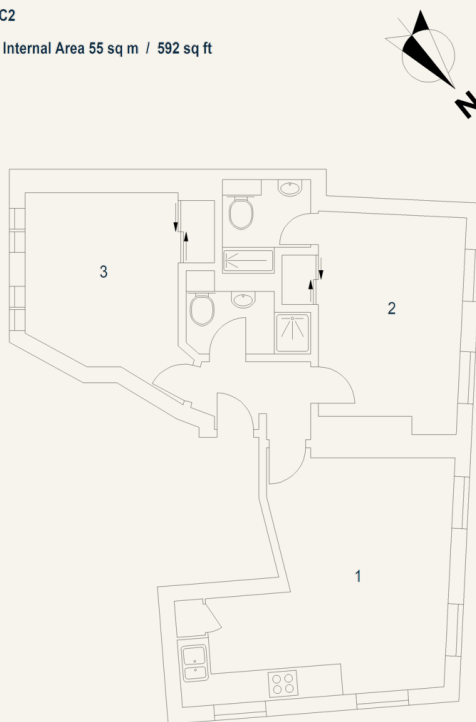
Approximate Gross Internal Area 55 sq m / 592 sq ft

First Floor

1 Kitchen /  
Dining /  
Reception Room  
5.03 x 4.41M  
16'6" x 14'6"

2 Bedroom  
4.17 x 2.86M  
13'8" x 9'5"

3 Bedroom  
3.65 x 3.35M  
12' x 11'



Floor Plan produced for Tavistock Bow by Mays Floorplans © Tel 020 3397 4594  
Illustration for identification purposes only, not to scale.

**tavistockbow**

21 New Row, Covent Garden,  
London, WC2N 4LE

t: 020 7477 2177  
e: hello@tavistockbow.com  
w: tavistockbow.com

**Catherine Street, Covent Garden WC2**

