



23 Pitbank Drive
Northampton, NN4 0AQ



Derran Dooley
Partnered With
Simpsons
Property Experts

Tucked away at the end of a private driveway in the ever-popular area of Collingtree Park, this beautifully presented four-bedroom detached home offers the perfect blend of space, style, and modern family living.

From the moment you step inside, there's a real sense of light and flow. The welcoming entrance hall sets the tone, leading to a versatile study or playroom—ideal for home working or growing families—and a bright, dual-aspect sitting room that invites you to relax and unwind.

The true heart of the home is the stunning kitchen/dining space stretching across the entire rear. Designed with both everyday living and entertaining in mind, it features integrated appliances, a sociable breakfast bar, and plenty of room for a dining table. Bi-fold doors open seamlessly onto the garden, creating that sought-after indoor-outdoor lifestyle—perfect for summer gatherings or simply enjoying a quiet morning coffee.

Upstairs, four generous double bedrooms provide plenty of space for the whole family. The main bedroom feels like a private retreat, complete with fitted wardrobes and its own ensuite, while the remaining bedrooms are served by a well-appointed family bathroom.

Outside, the home continues to impress. A private driveway offers ample parking and leads to a detached garage, while the landscaped rear garden has been thoughtfully designed for both relaxation and entertaining, with a patio seating area and lawn framed by secure fencing.

Practical touches such as uPVC double glazing and gas radiator heating ensure comfort and efficiency throughout.

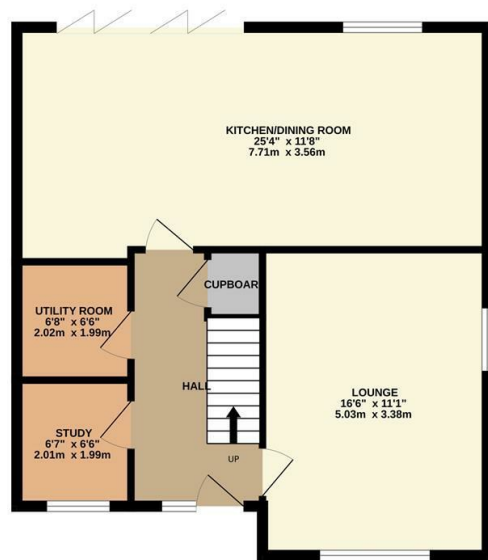
Agent's Note: A service charge of £74.93 is payable every six months.



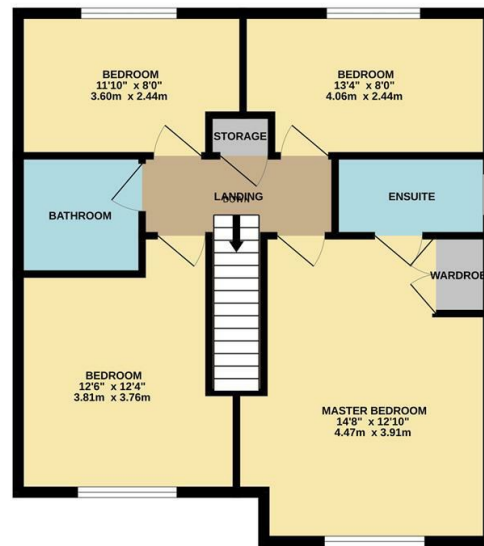
Offers over £440,000



GROUND FLOOR

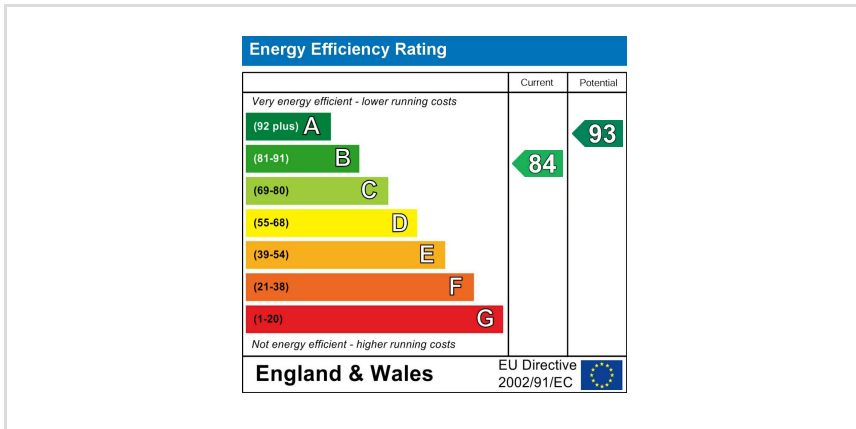


1ST FLOOR



TOTAL FLOOR AREA : 1352sq.ft. (125.6 sq.m.) approx.

Whilst every attempt has been made to ensure the accuracy of the floor plan contained here, measurements of doors, windows, rooms and any other items are approximate and no responsibility is taken for any error, omission, or mis-statement. The plan is copyright to Simpson and Partners and is for illustrative purposes and should only be used as such by any prospective purchaser. The services, systems and appliances shown have not been tested and no guarantee as to their operability can be given
Made with Metropix ©2026





Derran Dooley
Partnered With

Simpsons
Property Experts



Tel: 01604 969706

Email: northampton@simpsonspropertyexperts.co.uk

Web: simpsonspropertyexperts.co.uk/our-locations/northampton

