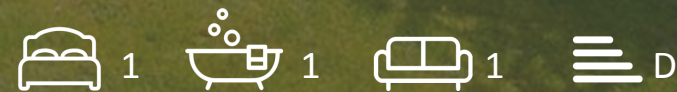


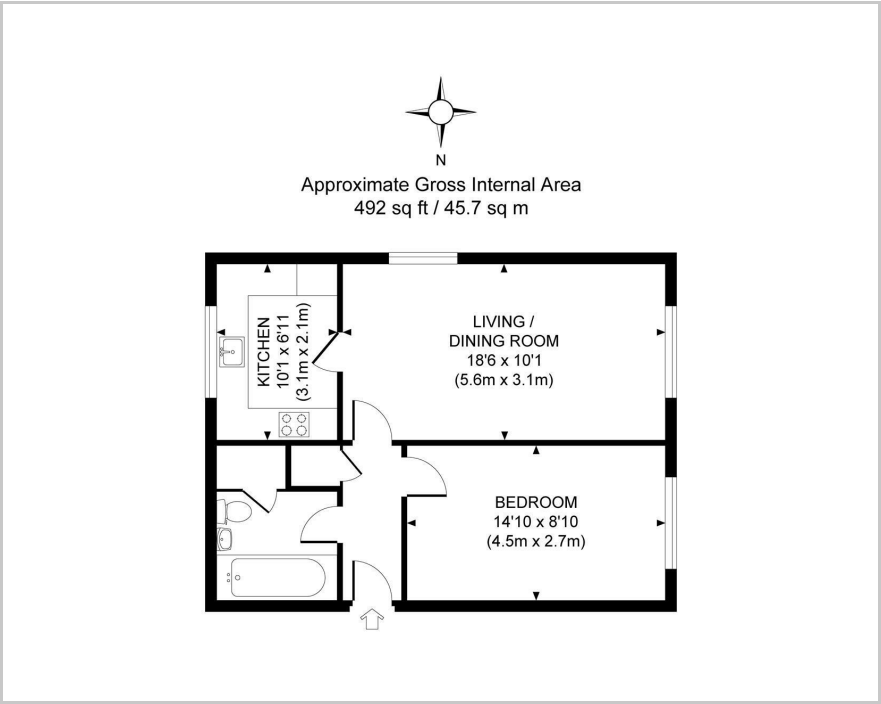


2 Arlington Court Perrymount Road, Haywards Heath, RH16 3UB

£1,100 Per Month



Floor Plan



Area Map



These particulars, whilst believed to be accurate are set out as a general outline only for guidance and do not constitute any part of an offer or contract. Intending purchasers should not rely on them as statements of representation of fact, but must satisfy themselves by inspection or otherwise as to their accuracy. No person in this firms employment has the authority to make or give any representation or warranty in respect of the property.

Accommodation

Ideally positioned near the mainline station, this well-presented 1-bedroom ground floor apartment in Arlington Court on Perrymount Road offers both convenience and comfort.

Newly decorated and carpeted, the apartment features a bright and modern interior, providing a fresh and welcoming living space. It also comes with the added benefit of one allocated parking space. Available from early October, this apartment is perfect for those seeking a prime location with easy access to local amenities and transport links.

Viewing

Please contact us on 01444 455221 if you wish to arrange a viewing appointment for this property or require further information.

Energy Efficiency Graph

