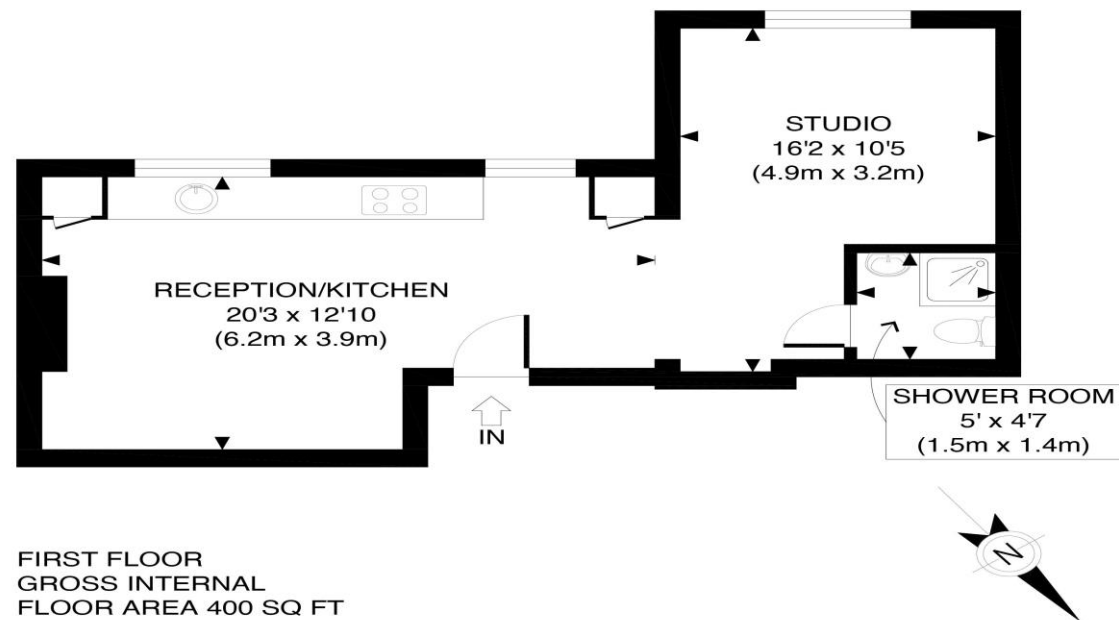


# The Floorplan...



APPROX. GROSS INTERNAL FLOOR AREA 400 SQ FT / 37 SQM

Disclaimer: Floor plan measurements are approximate and are for illustrative purposes only. While we do not doubt the floor plan accuracy and completeness, you or your advisors should conduct a careful, independent investigation of the property in respect of monetary valuation

Pinner Road

date 13/08/24

photoplan

## More details from...

Call: **Brian Cox North Harrow: 020 3866 6640**

Email: [Azi.rahman@brian-cox.co.uk](mailto:Azi.rahman@brian-cox.co.uk)

Web: [www.brian-cox.co.uk](http://www.brian-cox.co.uk)



0203 866 6640  
[brian-cox.co.uk](http://brian-cox.co.uk)



Brian Cox Estate are delighted to bring this exceptionally presented first floor Studio apartment to the market. This stunning flat boasts a bright and spacious living area, newly renovated kitchen and bathroom. The bonus of additional space in the studio, offers the scope for a perfect home office. The amazing location is ideal for anyone commuting into central London with North Harrow Underground station being only a short walk away. North Harrow High Street also offers an array amenities including independent shops, cafes, gym and so much more. The flat also benefits from having a parking space on the driveway, double glazing and central heating.



Offers in Excess of  
**£200,000**

Pinner Road, Harrow HA1 4HN



## In Brief...

- Studio Apartment
- Chain Free
- Excellent Condition
- Parking Space
- Walking Distance to North Harrow, West Harrow and Harrow on the Hill Station
- Council Tax Band B & EPC Rating C



## The Location...

### Nearest Stations ...

- North Harrow (0.1 miles)
- West Harrow (0.4 miles)
- Rayners Lane (0.8 miles)

North Harrow is a suburban area of North West London, situated North West of central Harrow within the London Borough of Harrow. North Harrow Train Station is a London Underground Station. The station is on the Metropolitan Line between Harrow-on-the-Hill (southbound) and Pinner (northbound). The area is served well by several bus links, local amenities including a post office, Gym, Tesco Express, a selection of restaurants, take-aways & cafés and independent specialist shops. There are several schools and churches in the area. There are many local schools in the area which all have a good of higher Ofsted report.