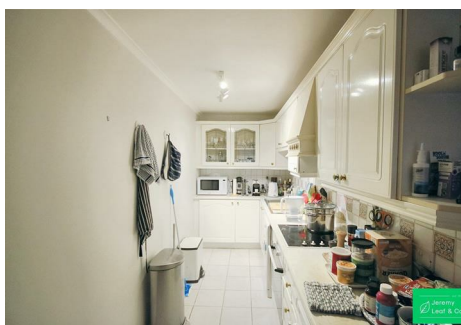


est 1979

Jeremy
Leaf & Co.



Holden Avenue, London

Offers In Excess Of £375,000

- Bathroom
- Service Charge £3,000 p.a.
- 960 Year Lease
- Council Tax Band D
- Two Double Bedrooms
- Balcony
- Kitchen
- Minutes Walk to Tube Station
- No Ground Rent
- Reception

863 High Road, London, N12 8PT
020 8446 4295

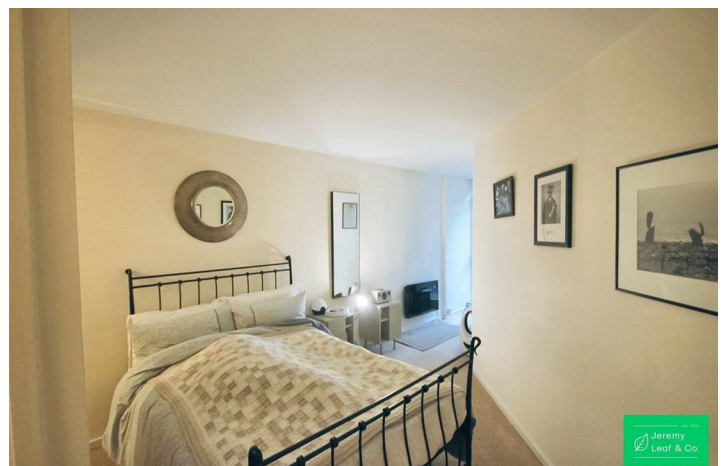
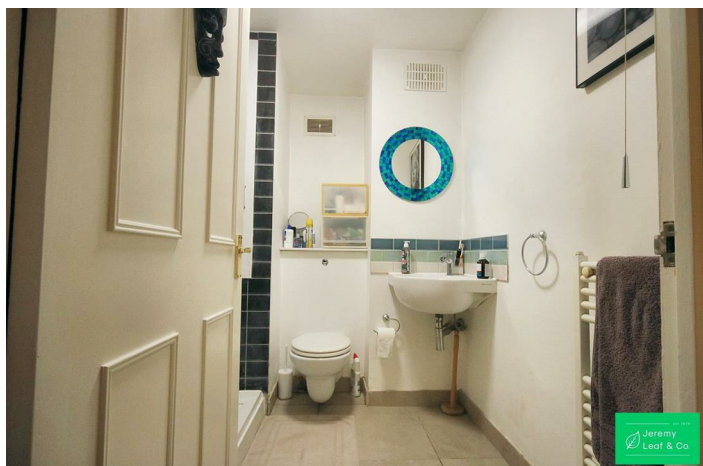
property@jeremyleaf.co.uk
<https://www.jeremyleaf.co.uk/>

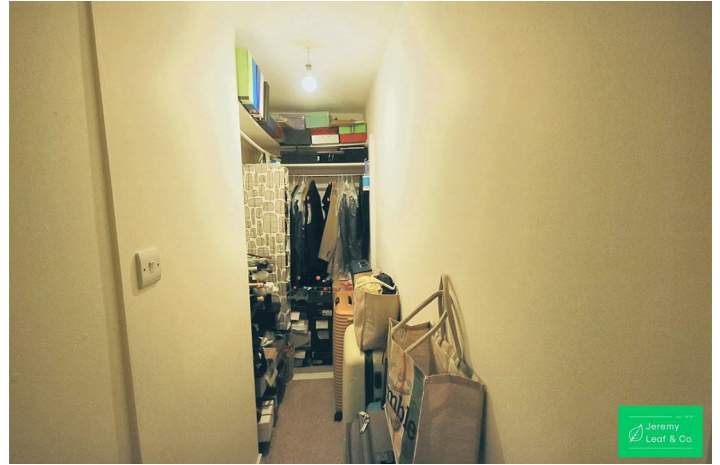
Holden Avenue, London, N12 8RQ

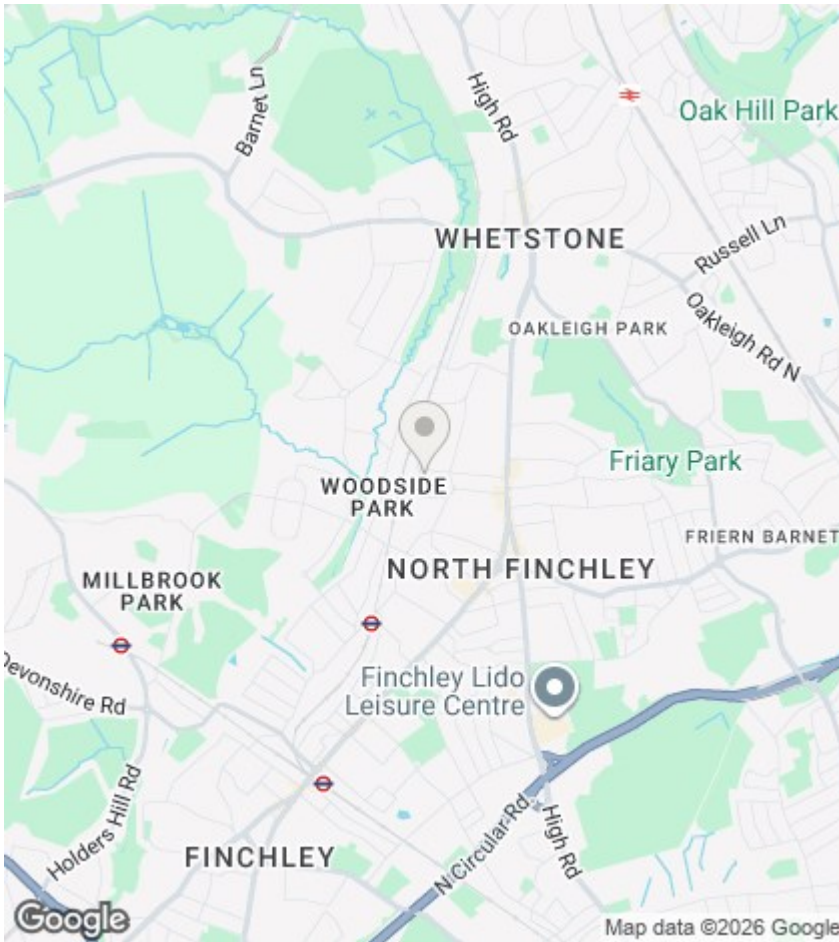
A two double bedroom first floor purpose built flat located within a few minutes walk of Woodside Park tube station and conveniently close to North Finchley's shopping and transport amenities. The property has a modern interior and benefits include a balcony and bedroom with walk-in wardrobe. Offered Share of Freehold and chain-free. Council tax band D.



Council Tax Band: D







Directions

Viewings

Viewings by arrangement only. Call 020 8446 4295 to make an appointment.

EPC Rating:

C

Energy Efficiency Rating		Current	Potential
Very energy efficient - lower running costs			
(92 plus)	A		
(81-91)	B		
(69-80)	C	74	82
(55-68)	D		
(39-54)	E		
(21-38)	F		
(1-20)	G		
Not energy efficient - higher running costs			
England & Wales		EU Directive 2002/91/EC	

