



smarthomes

Langstone Road Yardley Wood, Birmingham

- A Very Well Presented Mid-Terrace Family Home
- Three Bedrooms
- Spacious Lounge
- Modern Re-Fitted Kitchen

£240,000

Current EPC Rating - D
Current Council Tax Band - B





Property Description

A very well presented mid-terrace property conveniently situated and offering three bedrooms, spacious lounge, re-fitted kitchen, ground floor family bathroom, extensive well maintained rear garden and off-road parking



Rooms & Measurements

Spacious Lounge to Front 3.5m x 4.1m (11'5" x 13'5")

Re-Fitted Kitchen to Rear 2.7m x 2.9m (8'10" x 9'6")

Ground Floor Bathroom to Rear 1.2m x 2.7m (3'11" x 8'10")

Bedroom One to Front 4.1m x 3.1m (13'5" x 10'2")

Bedroom Two to Rear 2.7m x 3.7m (8'10" x 12'1")

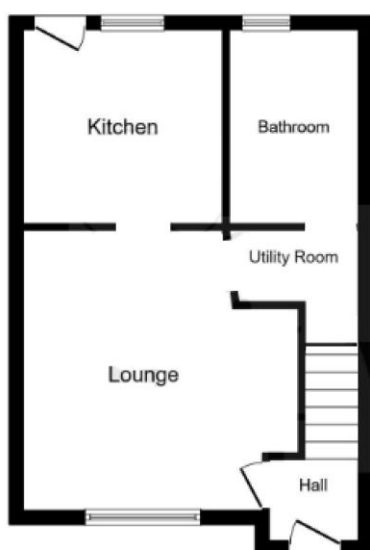
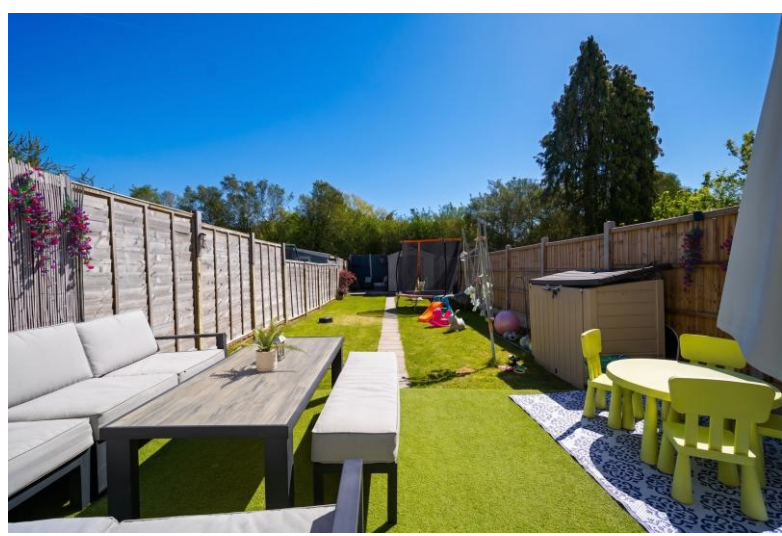
Bedroom Three to Rear 2.8m x 2.1m (9'2" x 6'10")

Tenure

We are advised by the vendor that the property is freehold. We would advise all interested parties to obtain verification through their own solicitor or legal representative. EPC supplied by vendor.

Current council tax band – B





Ground Floor



First Floor

316 Stratford Road
Shirley
Solihull
B90 3DN

www.smart-homes.co.uk
0121 744 4144

Agents Note: Whilst every care has been taken to prepare these particulars, they are for guidance purposes only. We believe all information to be correct from the day of marketing however, we advise and recommend that your conveyancer and or surveyor verifies all information supplied. All measurements are approximate and are for general guidance purposes only and whilst every care has been taken to ensure their accuracy, they should not be relied upon and potential buyers are advised to recheck the measurements.