



## 2a Park Road, Woodthorpe - NG5 4HR

Guide Price £400,000 - £425,000





## 2a Park Road

Woodthorpe, Nottingham

GUIDE PRICE £400,000–£425,000 Beautifully-presented 2 double bed detached bungalow in the sought-after Woodthorpe offering superb single-storey accommodation with parking and a contemporary layout!

Council Tax band: D

Tenure: Freehold

EPC Energy Efficiency Rating: C

EPC Environmental Impact Rating: C

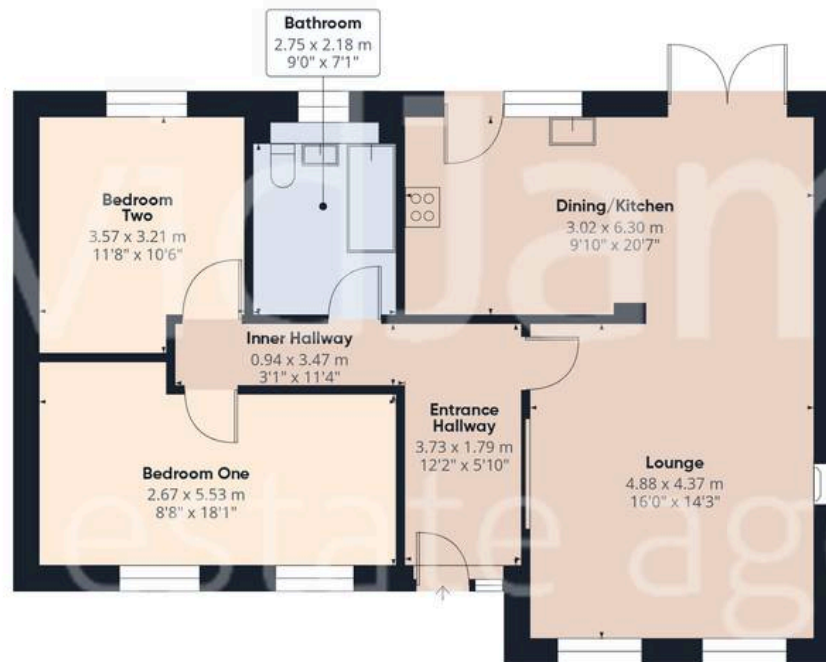
- Beautifully-presented detached bungalow in the sought-after Woodthorpe
- Perfectly suited to buyers looking for relaxed single-level accommodation
- Ideally positioned for access to Mapperley, Arnold and Sherwood's nearby amenities and bus services
- Comprehensive programme of improvements completed by the current vendor throughout
- Spacious lounge featuring a solid-fuel burner flowing seamlessly into a stylish dining kitchen
- Two generous double bedrooms
- Originally a three bedroom layout and offering potential for the new owner(s) to reconfigure
- Luxury four-piece bathroom with both a bath and separate walk-in shower enclosure
- Enclosed low-maintenance rear garden incorporating an insulated versatile outbuilding with power, lighting and heating
- Gated driveway provides off-street parking









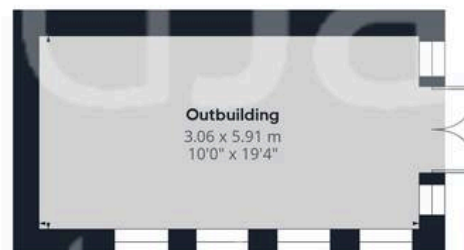


Floor 0 Building 1

Approximate total area<sup>(1)</sup>

103.2 m<sup>2</sup>

1111 ft<sup>2</sup>



Floor 0 Building 2

(1) Excluding balconies and terraces

Calculations reference the RICS IPMS 3C standard. Measurements are approximate and not to scale. This floor plan is intended for illustration only.

GIRAFFE360





## David James Estate Agents

David James Estate Agents, 45B Plains Road – NG3 5JU

0115 962 4213 • [mapperley@david-james.com](mailto:mapperley@david-james.com) • [www.david-james.com](http://www.david-james.com)

These particulars are produced in good faith and are set out as a general guide only. Measurements are approximate and floor plans are for illustrative purposes only. Services have not been tested. We have established professional relationships with third-party suppliers for the provision of services to Clients, details of which can be found on the property listing page on our website.