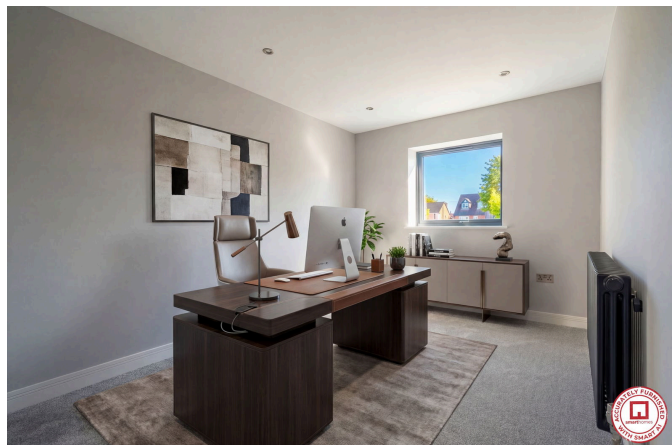
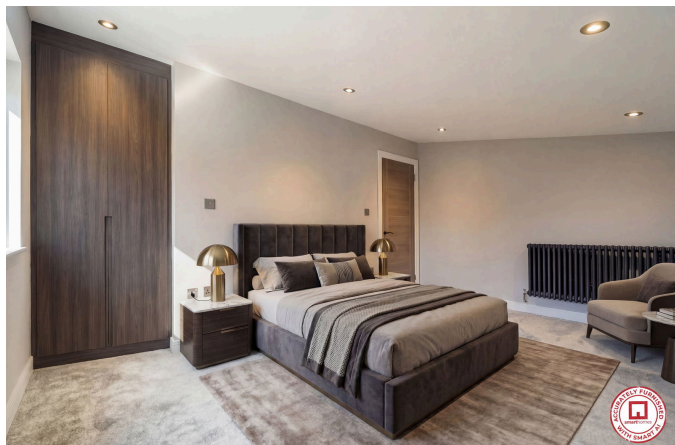


2431 Stratford Road,
£675,000

3 3 1



3 Union Road, Shirley, Solihull B90 3BT

sales • new homes • land • commercial • mortgages • auction

Registered Company in England and Wales. Company No 03591917
Registered Office: smart New Homes Ltd, 3 Union Road, Shirley, Solihull B90 3BT

- Unique and beautifully presented three bedroom detached home
- Tall ceilings throughout creating a bright and spacious feel
- Spacious living room with bi-fold doors opening to the garden
- Excellent storage space throughout the property
- Secure gated entrance with fob access
- Situated in the desirable village of Hockley Heath
- Stylish modern interiors finished to a high standard
- Contemporary kitchen with integrated appliances and dining space
- Shared driveway with parking for approximately 3-4 vehicles
- Attractive open views and a peaceful setting



MUST SEE! - A beautifully presented and truly unique three-bedroom detached home, situated in the sought-after village of Hockley Heath. This impressive property offers spacious, light-filled accommodation with tall ceilings throughout, creating a wonderful sense of openness and character. Finished to a high standard, the home combines modern design with practical living, featuring excellent storage and well-proportioned rooms. Externally, the property benefits from

parking for approximately three to four vehicles, while enjoying attractive open views that enhance the peaceful setting. An ideal home for those seeking something special