

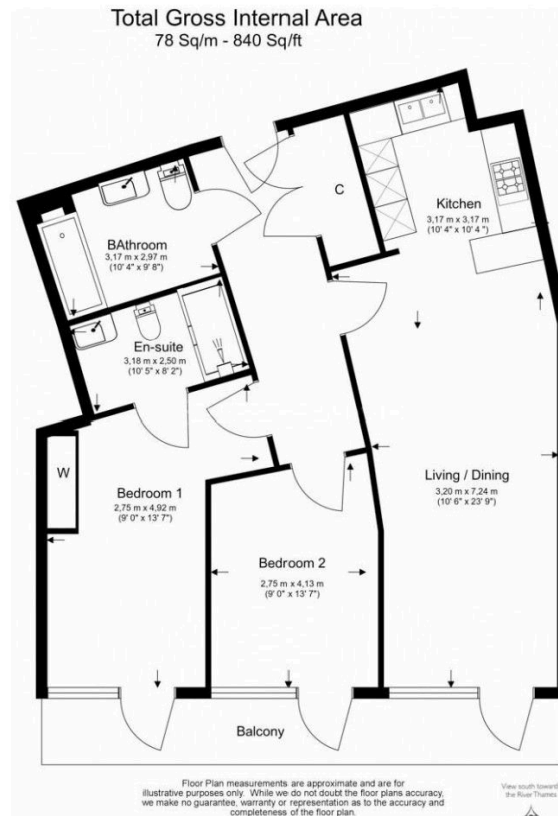
Quayside House, Brentford, TW8

Guide Price £600,000 - £650,000

2 2 1



- Quote MG1175 for all enquiries
- Guide Price of £600,000 to £650,000
- 2 Double Bedrooms
- 2 Bathrooms (1 Ensuite)
- 2nd Floor with Lift Access
- South Facing Balcony Towards River Thames
- Residents Amenities - Concierge, Gym & Communal Gardens
- Underground Parking
- Short Walk to Kew Bridge Train Station
- Close to Kew Gardens



Located on the second floor of Quayside House within the highly sought-after Kew Bridge riverside development, this bright and spacious two-bedroom apartment offers approx. 840 sqft of stylish modern living with a standout south-facing balcony overlooking the river. The property features a generous open-plan reception and dining area with wood flooring and floor-to-ceiling windows, leading to a private balcony with far-reaching views. The contemporary integrated kitchen includes a breakfast bar, creating an ideal social space.