



Cherringham, 334 Bridgnorth Road

THOMAS HARVEY
ESTATE AGENTS

An Individually Designed Three Bedroom Detached Bungalow, Refurbished To A First Class Standard With A Host Of Trendy & Superior Features Throughout. Occupying Certainly A Rare & Prominent Position Just Off The Bridgnorth Road With Stunning Landscaped Surrounding Gardens & Having Panoramic Views Over Countryside!

Cherringham, 334 Bridgnorth Road, Wightwick, Wolverhampton, WV6 7ET

Asking Price: £685,000

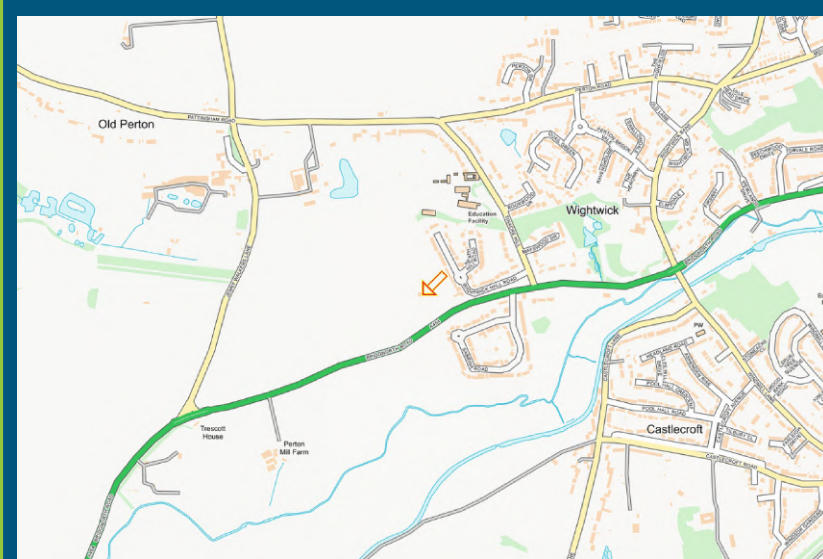
A rare opportunity to acquire an exceptional three-bedroom detached bungalow, individually designed and beautifully extended, occupying one of Wolverhampton's most sought-after locations just off the prestigious Bridgnorth Road (A454). Enjoying an idyllic rural setting with uninterrupted 360° panoramic views across open fields and towards the Cleve Hills, this remarkable home offers a unique blend of luxury, privacy and countryside living while remaining within easy reach of local amenities.

Approached via a long gated driveway on the Wightwick border, the property is screened from the road and sits within a generous and meticulously landscaped ¼-acre plot. The gardens have been thoughtfully designed to complement the interior, featuring shaped lawns, mature planting, gravelled terraces and a charming summer house ideal for alfresco dining and summer entertaining.

Internally, the bungalow has been extended and remodelled to an exceptional standard, showcasing a stunning contemporary interior where no expense has been spared. High-quality flooring, underfloor heating to most rooms, replaced windows and doors, and stylish décor throughout create a home ready for immediate occupation. A welcoming entrance hall leads to a charming 15ft living room, a luxurious family bathroom and three well-proportioned double bedrooms accessed via an inner hallway. At the heart of the home is a central sitting area opening into a bright dining room with views over the gardens. The showpiece of the property is the bespoke open-plan dining kitchen, fitted with a range of high-end appliances, modern cabinetry and a central island/breakfast bar. Two sets of large glazed doors flood the space with natural light and frame the breathtaking rural backdrop, making this an outstanding entertaining area for families and guests. A fitted utility with guest WC provides access to a private courtyard and further enhances the practicality of the layout. From the entrance hall, a loft hatch with pull-down ladder leads to a useful attic space with power, lighting and windows — currently used for storage but offering excellent potential for conversion (STPP).

Despite its peaceful countryside feel, the property is ideally positioned for everyday convenience. Compton is within walking distance, while Perton, Tettenhall and Codsall are only a short drive away. The area benefits from excellent state and independent schools, reliable bus routes, and easy access to Wolverhampton City Centre and Bilbrook Train Station (approx. 3.5 miles). The popular market town of Bridgnorth is also just a 20-minute drive.

A truly outstanding home in a premier location, combining luxury living with spectacular views. Internal inspection is strongly recommended to fully appreciate the quality, setting and lifestyle this exceptional bungalow offers.



Score	Energy rating	Current	Potential
92+	A		
81-91	B		
69-80	C		77 C
55-68	D	67 D	
39-54	E		
21-38	F		
1-20	G		



T: 01902 758111

E: properties@thomasharvey.co.uk

W: www.thomasharvey.co.uk

A: 1 The Arcade, High Street, Tettenhall, Wolverhampton WV6 8QS

Entrance Hall: 16ft (4.88m) x 5'9" (1.75m)

PVC double glazed double doors with matching side windows, built in cloaks cupboard, period style coved ceiling, underfloor heating and loft hatch with pull down ladder to attic space/ room.

Bathroom: 9'3" (2.81m) x 8'4" (2.54m)

Fitted with a superior white suite comprising roll top bath with chrome handheld spray, corner shower with chrome overhead rainfall shower & separate handheld spray, vanity unit with mirrored wall cabinet over, built in mirrored & gloss recessed storage units with recessed WC, chrome heated towel rail, patterned ceramic tiled flooring with underfloor heating, matching wall tiles, period style coved ceiling, recessed ceiling spot lights and double glazed opaque window to the side.

Inner Hall: Period style coved ceiling, engineered wood flooring with underfloor heating, and double glazed window to front.

Bedroom One: 12'9" (3.89m) x 9'11" (3.02m)

Built in double wardrobe, period style coved ceiling, engineered wood flooring with underfloor heating and double glazed leaded windows to front & side.

Bedroom Two: 11'10" (3.60m) x 10'6" (3.20m)

Period style coved ceiling, engineered wood flooring with underfloor heating and double glazed leaded windows to front & side.

Bedroom Three: 10'8" (3.26m) x 7'9" (2.36m)

Built in twin floor to ceiling wardrobes, period style coved ceiling, engineered wood flooring with underfloor heating and double glazed leaded bow window to side.

Living Room: 14'10" (4.52m) x 13'8" (4.17m)

Open brick fireplace with granite hearth, oak surround & wood burning stove, wall light points, period style coved ceiling, underfloor heating, double glazed French doors to side and open brick archway leads to: **Sitting Area: 7'5" (2.27m) x 4'7" (1.40m)** Double glazed bay window to side.

Sitting Room: 16'9" (5.10m) x 11'2" (3.41m)

White period style radiator, period style coved ceiling, engineered wood flooring with underfloor heating, double glazed window to the side and open access to:

Dining Room: 9'11" (3.02m) x 9'4" (2.84m)

Period style coved ceiling, engineered wood flooring with underfloor heating and double glazed leaded bow window to rear with matching side door.

Utility: 10'3" (3.13m) x 4'9" (1.44m)

Fitted with a matching suite of contemporary dark grey gloss units comprising base cupboards, suspended wall cupboards & matching granite worktops, white ceramic single drainer sink unit with chrome tap, concealed plumbing for washing machine, white vertical radiator, white glazed brick part tiled walls, terracotta tiled flooring, vaulted ceiling with two skylights and two sets of PVC double glazed exterior doors to either side. **Guest WC:** Fitted with a modern white suite comprising low level WC, round countertop basin with chrome mixer tap, white glazed brick part tiled walls, terracotta tiled flooring and double glazed bow window to side

Breakfast Kitchen: 16'10" (5.13m) x 15'5" (4.70m)

Fitted with a bespoke suite of matching light cream gloss units comprising an extensive range of built in base cupboards, drawers & suspended wall cupboards including pull out carousel organizer, hardwood worktops, matching central island/ breakfast bar with 4-ring induction hob with stainless steel extractor hood over, plinth & background lighting, built in appliances include double electric oven, fridge, freezer, ceiling spot lights, stone effect part tiled walls, three white modern style radiators, stone style tiled flooring, double glazed sliding door to side and matching full width double glazed picture window with double opening sliding doors. **Utility Cupboard:** Worcester central heating boiler, plumbing for dishwasher, suspended wall cupboards, stone style tiled flooring and double glazed window to rear.

Outside: The gated entrance provides access to the gravelled driveway providing ample off road parking, enclosed courtyard, summer house, a neatly landscaped rear garden with shaped lawns & flowerbeds, garden shed, surrounded by fenced border and a number of seating areas to offer different views of the surrounding background.

IMPORTANT NOTICE: Every care has been taken with the preparation of these Particulars but they are for general guidance only and complete accuracy cannot be guaranteed. Areas, measurements and distances are approximate and the text, photographs and plans are for guidance only. If there is any point which is of particular importance please contact us to discuss the matter and seek professional verification prior to exchange of contracts.

Tenure: Freehold

Council Tax: Band E – South Staffordshire

EPC Rating: D (67) No: 8900-3114-0722-2021-3953

Total Floor Area: 1415sq feet (131.0sq metres) Approx.

Services: We are informed by the Vendors that the site is fitted with an oil central heating system & septic tank.

Broadband – Ofcom checker shows Standard & Superfast are available

Mobile: Ofcom checker shows all four main providers have limited coverage indoor and all four have likely coverage outdoor.



























**Total Floor Area: 1,415.0sq feet
(131sq metres) Approx.**

Floorplans: Internal floor areas are approximate for general guidance only – Not to scale position & size of doors, windows, appliances and other features are approximate



PROPERTY MISDESCRIPTION ACT 1991

The Agent has not tested any apparatus, equipment, fixtures and fittings or services and so cannot verify that they are in working order or fit for the purpose.

A buyer is advised to obtain verification from their solicitor or surveyor.

MISDESCRIPTIONS ACT 1967 – CONDITIONS UNDER WHICH THE ATTACHED PARTICULARS ARE ISSUED.

Thomas G Harvey for themselves and for the vendors of this property whose agents they are, give notice that:-

1. The particulars do not constitute any part of an offer or contract.
2. All statements contained in these particulars as to this property are made without responsibility on the part of Thomas G Harvey & Company or the vendor.
3. None of the statements contained in these particulars as to this property are to be relied on as statements of representations of fact.
4. Any intending purchaser must satisfy himself by inspection or otherwise as to the correctness of each of the statements contained in these particulars.
5. The vendor does not make or give, and neither Thomas G Harvey & Company, nor any person in their employment has any authority to make or give representation or warranty in relation to this property.