

Mark Anthony

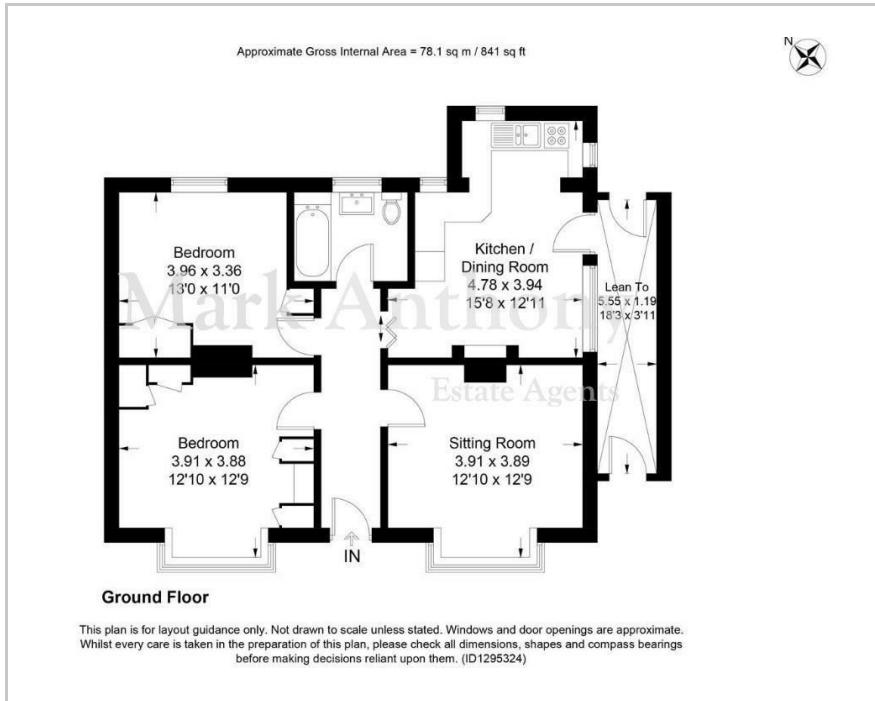
Estate Agents



34 Stones Road, Epsom, KT17 1DG
£500,000



Floor Plan



Area Map



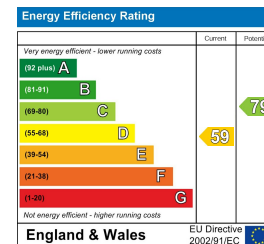
Accommodation

- Detached bungalow
- Situated within easy reach of Epsom town centre
- Light and airy reception room with deep bay window
- Extended open plan kitchen / dining room
- Two double bedrooms both with built in wardrobes
- Family bathroom
- Delightful rear garden extending to 70ft
- Block paved driveway providing off street parking
- No onward chain
- Epc Rating: D

Viewing

Please contact our Ewell Village Office on 02083937275 if you wish to arrange a viewing appointment for this property or require further information.

Energy Efficiency Graph



These particulars, whilst believed to be accurate are set out as a general outline only for guidance and do not constitute any part of an offer or contract. Intending purchasers should not rely on them as statements of representation of fact, but must satisfy themselves by inspection or otherwise as to their accuracy. No person in this firm's employment has the authority to make or give any representation or warranty in respect of the property.