



Flat 4, 15 De Vere Gardens, London
£1,200,000



Flat 4

15 De Vere Gardens, London

DE VERE GARDENS, KENSINGTON, W8

£1,200,000 Leasehold.

DESCRIPTION:

Situated within the prestigious and highly sought-after De Vere Gardens in the heart of Kensington, this spacious second-floor, walk-up apartment offers an exciting opportunity to acquire a characterful home in one of London's premier residential locations.

The property requires complete refurbishment with flexible accommodation comprising 2-3 bedrooms, 1-2 reception rooms, allowing buyers to tailor the layout to suit their individual lifestyle requirements.

Benefitting from high ceilings and elevated views and immediate vacant possession.

LOCATION:

De Vere Gardens is superbly positioned moments from the open green spaces of Kensington Gardens and Hyde Park, while the excellent shopping, dining and transport amenities of Kensington High Street and Gloucester Road are all within easy reach.

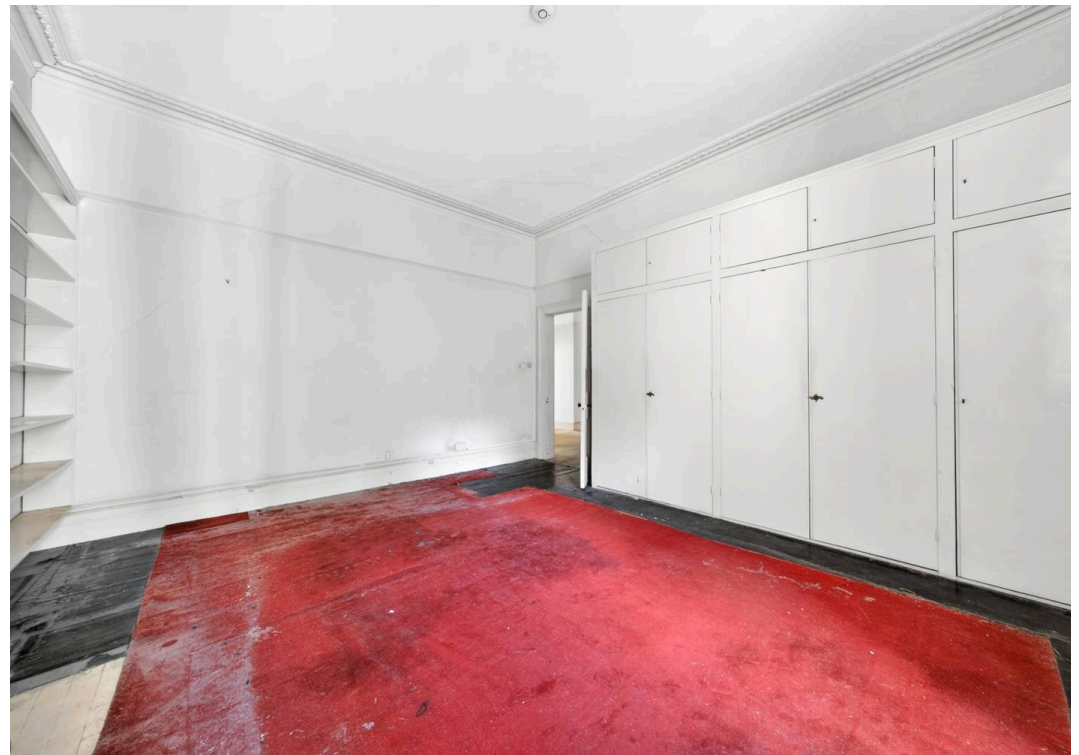
Early viewing is highly recommended to fully appreciate the location, proportions and potential this unique apartment has to offer

Council Tax band: G

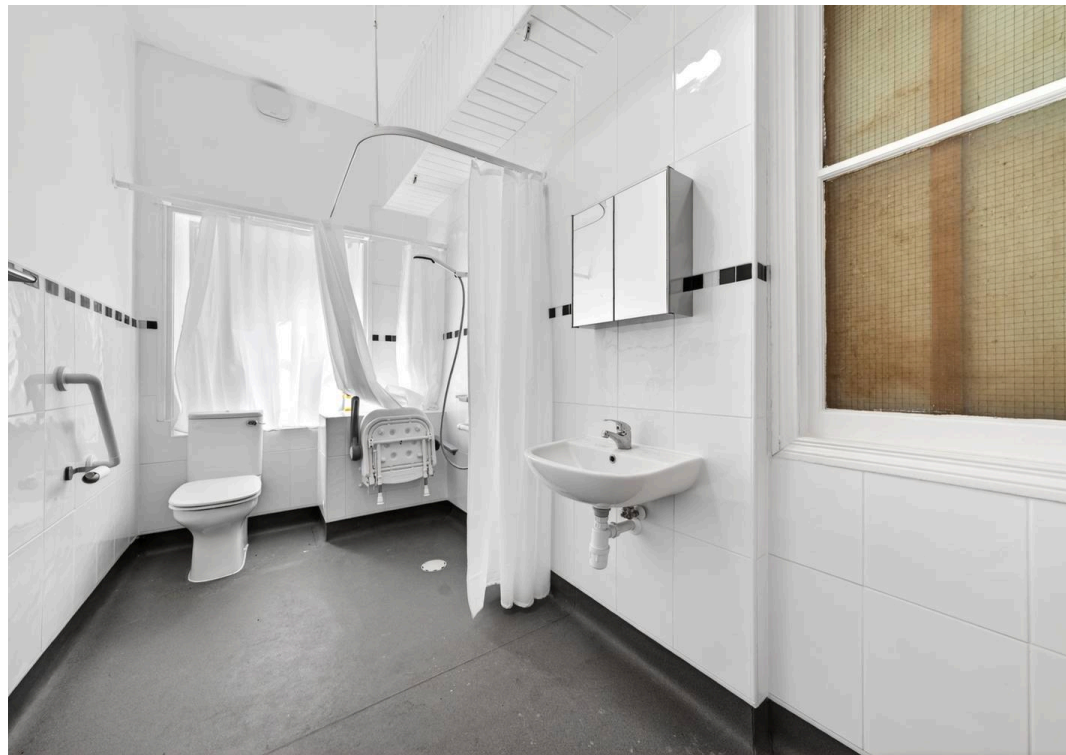
Tenure: Leasehold

EPC Energy Efficiency Rating: D

EPC Environmental Impact Rating: E

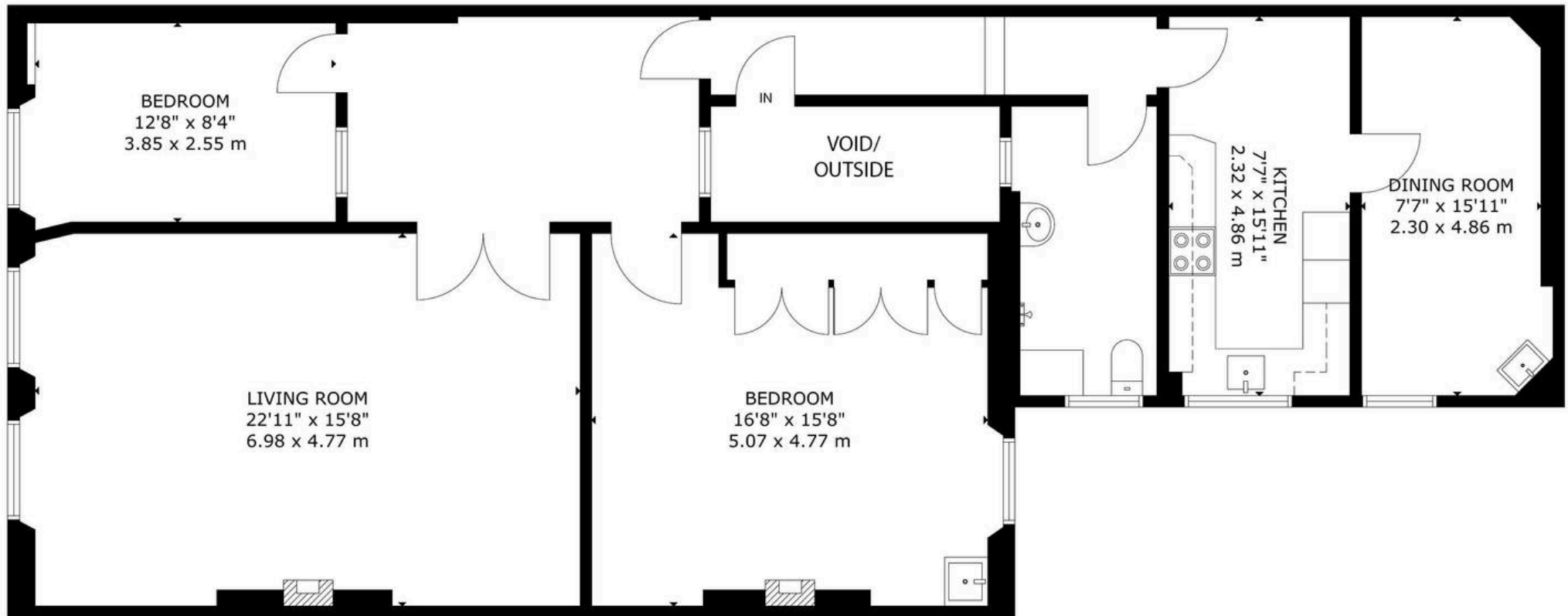








DE VERE GARDENS W8
GROSS INTERNAL AREA
APPROX TOTAL: 116.sq.m - 1248.sq.ft



2nd Floor

This plan is for layout guidance only. Not drawn to scale unless stated. Whilst every attempt has been made to ensure the accuracy of this floor plan measurements of doors, windows, rooms, Sq. footage & sq. metres are approximate. For Identification Purposes only. The actual property will vary. Price on application for a 180 day Licence to use this Plan ©14052026. Not to scale. Floorplan, Photography, Virtual Tours, Inventory, Video & EPC's by www.steelondon.co.uk email: mark@steelondon.co.uk



Nested West Kensington

0795 687 4031 • marcel.zaidan@nested.com • nested.com/westkensington