

10 Dyke Road Avenue

Brighton, BN1 5LB

Asking price £1,950,000

A rare detached modern family house in one of Brighton's most prestigious residential avenues, combining over 4,100sq of turnkey accommodation with gated parking, a south-facing garden terrace and excellent access to Preston Park station, London and Gatwick.

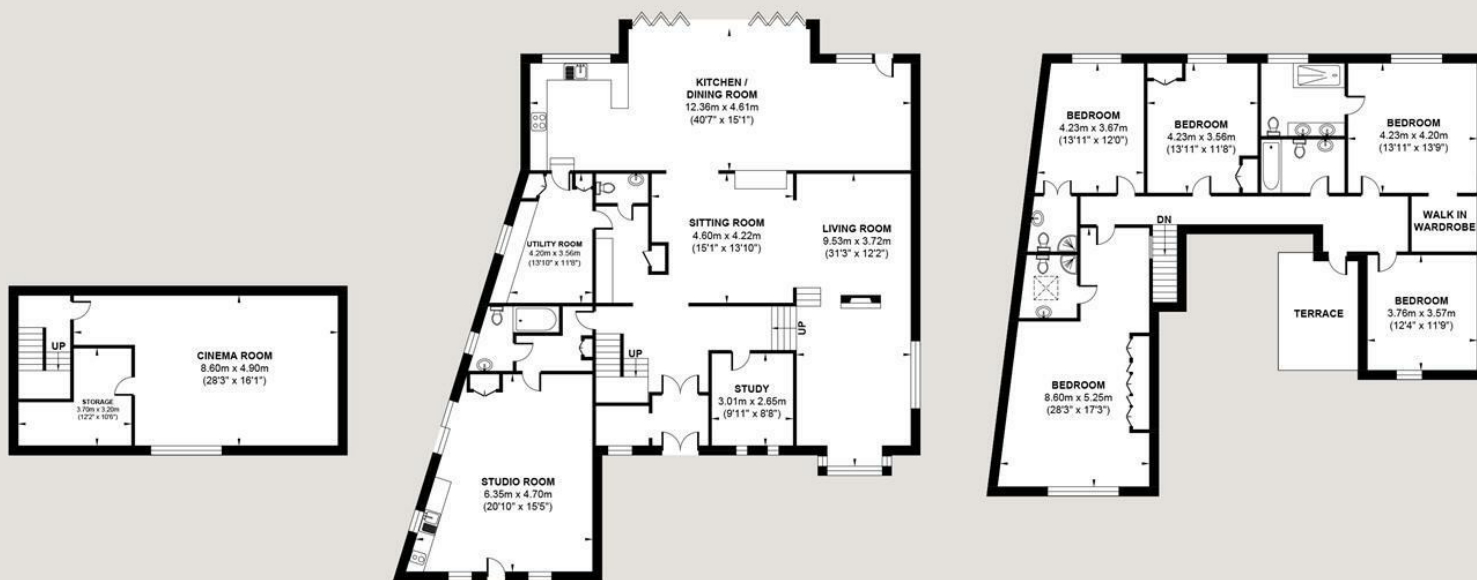


- Detached Gated Luxury Family Home
- Modern and Contemporary
- 6 Double Bedrooms
- Cinema Room
- Open Plan Living
- Close to Preston Park Station
- Self Contained Studio Apartment
- Over 4100 Sq Ft
- Study
- Beautiful Garden

Energy Efficiency Rating		
	Current	Potential
Very energy efficient - lower running costs		
(92 plus) A		
(81-91) B		
(69-80) C		
(55-68) D		
(39-54) E		
(21-38) F		
(1-20) G		
Not energy efficient - higher running costs		
	66	71
England & Wales	EU Directive 2002/91/EC	

DYKE ROAD AVENUE

Approx. Gross Internal Floor Area (Excluding Terrace) = 381.50 sq m / 4106.43 sq ft
Illustration for identification purposes only, measurements are approximate, not to scale.



LOWER GROUND FLOOR

Approximate Floor Area
547.45 sq ft
(50.86 sq m)

GROUND FLOOR

Approximate Floor Area
2115.10 sq ft
(196.50 sq m)

FIRST FLOOR

Approximate Floor Area
1443.87 sq ft
(134.14 sq m)



Foster & Co and their clients give notice that:
These sales particulars do not constitute any part of an offer of contract and are for guidance for prospective purchases only and should be not relied upon as a statement of fact.
We are not to be held responsible for material information that has not been given to us by our client at the time of marketing.
All measurements are approximate

