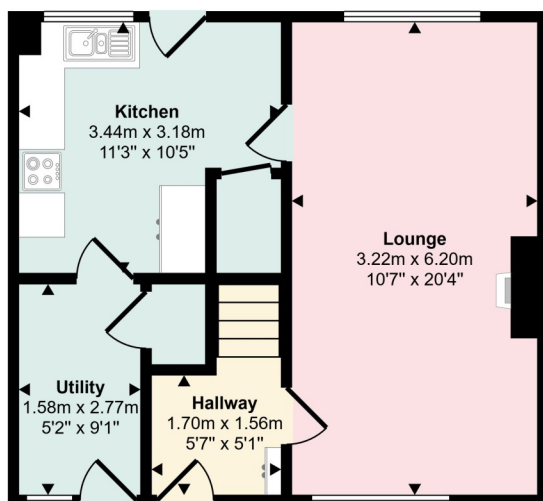




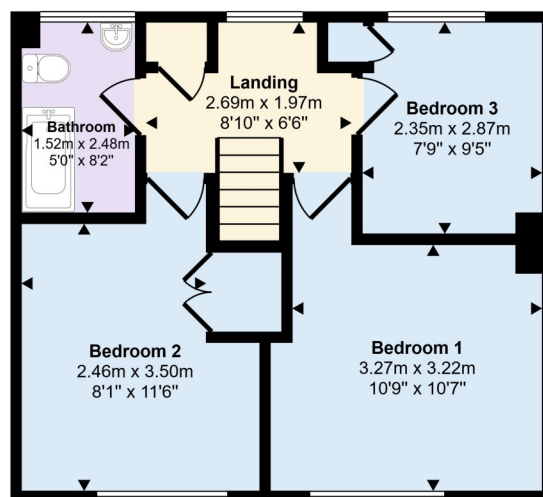
11 Tudhope Crescent, Alexandria, G83 0JL

David Muir Estate Agents are delighted to present this spacious three-bedroom mid-terrace villa, set within the ever-popular Tullichewan Estate and ideally positioned for local schooling, convenience shopping and excellent public transport links. The property offers generous accommodation throughout and represents an excellent opportunity for buyers looking to place their own stamp on a home, as internal modernisation will be required.

Approx Gross Internal Area
84 sq m / 907 sq ft



Ground Floor
Approx 42 sq m / 450 sq ft



First Floor
Approx 42 sq m / 457 sq ft

This floorplan is only for illustrative purposes and is not to scale. Measurements of rooms, doors, windows, and any items are approximate and no responsibility is taken for any error, omission or mis-statement. Icons of items such as bathroom suites are representations only and may not look like the real items. Made with Made Snappy 360.



David Muir Estate Agents
2 Church Street, Dumbarton,
G82 1QL



Tel 01389 734366
Fax 01389 742476



tracy@davidmuirestates.co.uk



davidmuirestates.com



davidmuirestates

Travel Directions

From the fountain in Alexandria proceed on Main Street towards Balloch. Take the last turning on your left prior to the roundabout into Tullichewan Drive. Take first right into Cameron Drive and follow road taking first left into Swanson Road. Continue to the end of this road and park. Take to path along to Tudhope Crescent.

Additional Information

Home Report Valuation: £140,000
Asking Price: Offers Over £135,000
Council Tax Band: D
Energy Efficiency Rating: C
Double Glazing
Gas Central Heating

Home Report

This property benefits from a Home Report which can be obtained from davidmuirestates.com or onesurvey.org

Disclaimer

These property details are set out as a general outline only and do not constitute any part of an Offer or Contract. All fixtures and fittings mentioned in these particulars are included in the sale. All others in the property are specifically excluded. Photographs are reproduced for general information and it must not be inferred that any item is included for sale with the property. All measurements, distances and areas are approximate and for guidance only.