



## Nevern Square, SW5

£3,250 Per calendar month

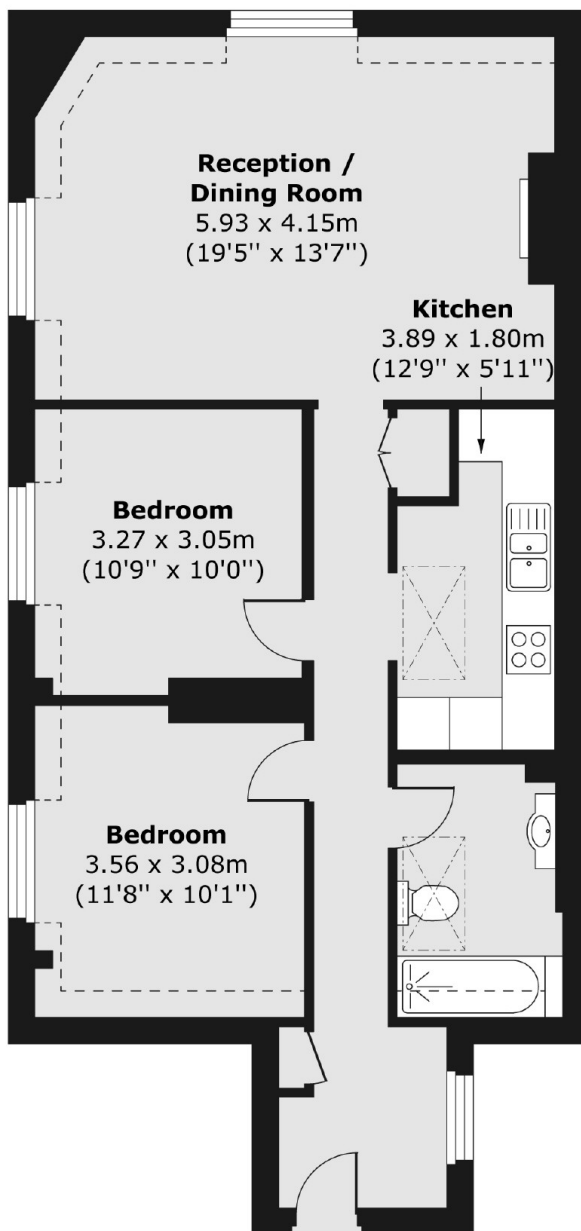
A beautifully presented two bedroom flat overlooking the sought after Nevern Square. This spacious flat has a large reception room filled with natural light and equal sized bedrooms with storage.

Nevern Square is located close to all shops, bars and restaurants of Earl's Court, while Earl's Court tube station (Piccadilly and District lines) is only 0.2 miles away.

### Features

Two Bedrooms  
One Bathroom  
Natural Light  
Separate Kitchen  
Spacious  
Lift

# Nevern Square, London, SW5



Total area (approx.) 70.40 sq. m (758 sq. ft)

## Dexters

Earl's Court  
3 Hogarth Place  
London  
SW5 0QT  
Lettings  
020 7370 3030

Energy Rating: D. We aim to make our particulars both accurate and reliable. However they are not guaranteed; nor do they form part of an offer or contract. If you require clarification on any points then please contact us, especially if you're traveling some distance to view. Please note that appliances and heating systems have not been tested and therefore no warranties can be given as to their good working order.

 **RICS** | Regulated  
Estate Agent  
and Letting Agent

dexters.co.uk