



## Shearwater Drive, NW9

£500,000

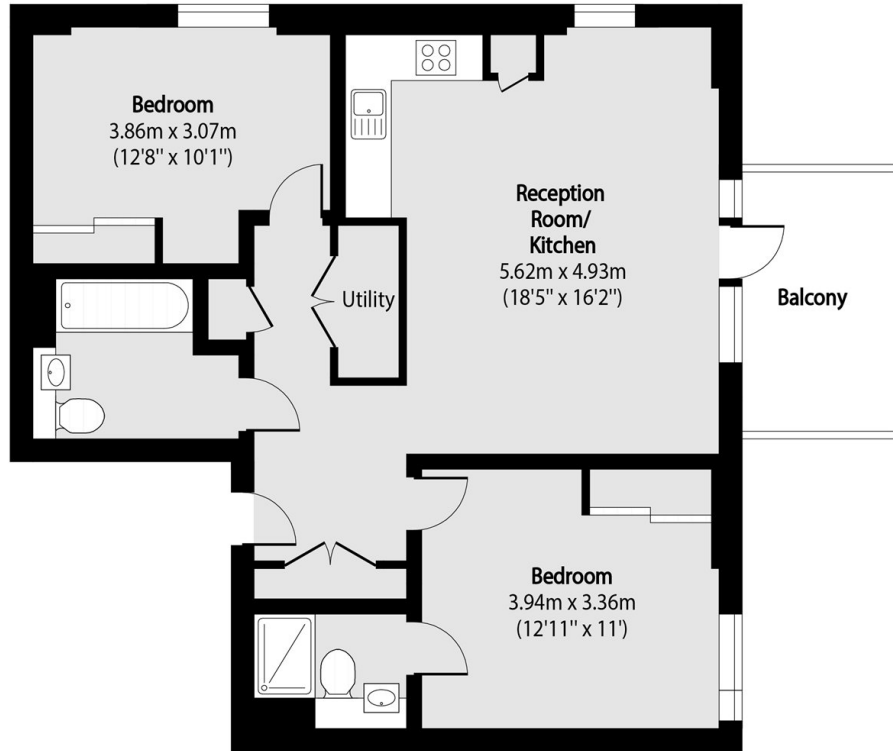
A beautiful two bedroom apartment in this modern purpose-built block in the Hendon Waterside Development. This property benefits from two bathrooms (one en-suite), a balcony and parking.

Shearwater Drive is part of the highly popular Hendon Waterside development. It is conveniently located within easy access of Hendon Station (National Rail), the Welsh Harp reservoir and Brent Cross Shopping Centre.

### Features

Hendon Waterside  
Modern Apartment  
Two Bedrooms  
Two Bathrooms  
Balcony  
Parking

Shearwater Drive,  
London, NW9



Total area (approx): 71.33 sq m (768 sq. ft)

Balcony total area (approx): 6.80 sq m (73 sq. ft)