



## CHRISTIAN FIELDS, SW16

£895,000

- Semi-detached property
- Three bedrooms
- Modernised and extended
- Double garage at the rear
- Scope to extend into the loft
- Energy rating: D





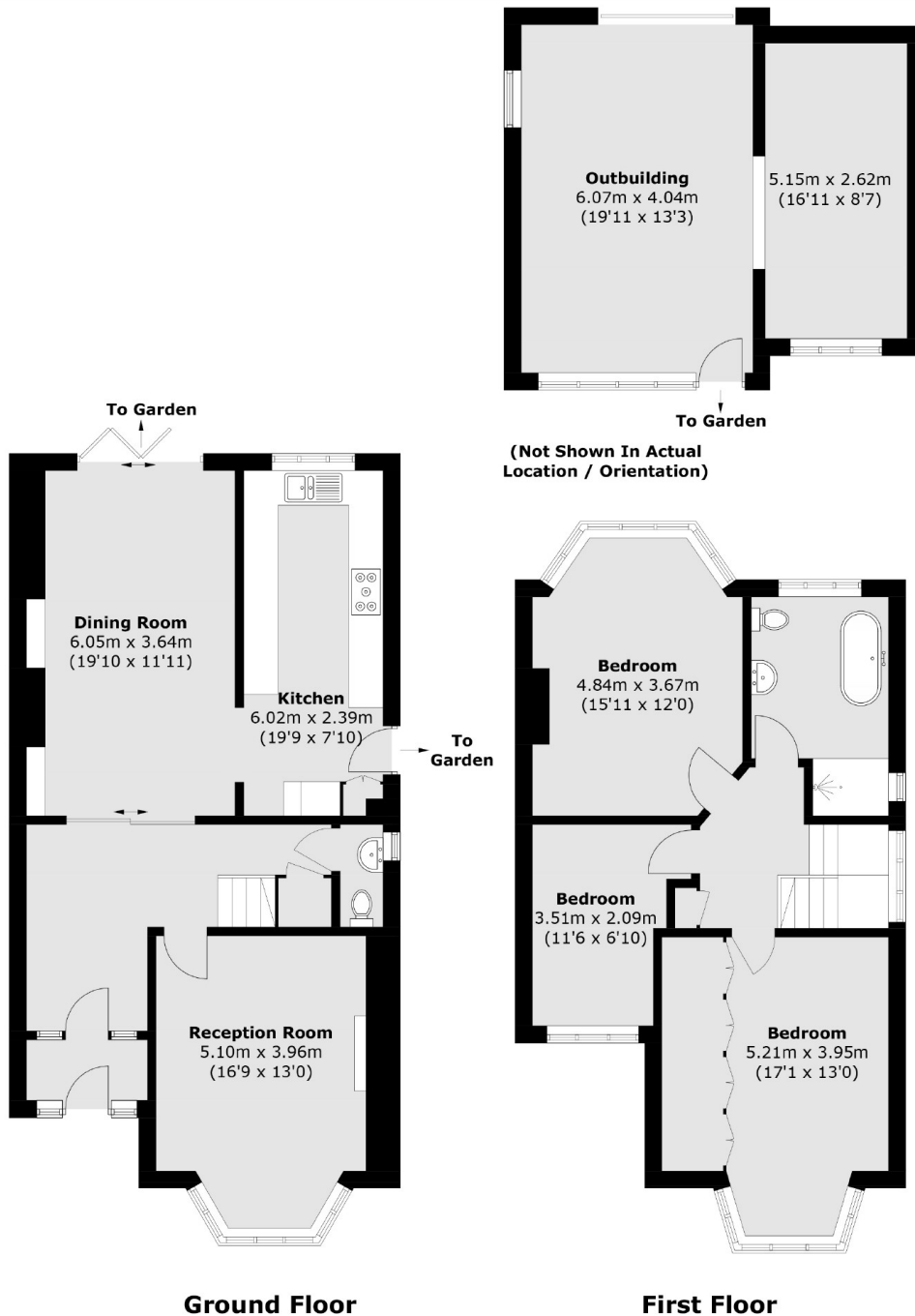
## ABOUT THE HOME

A stunning three bedroom semi-detached home on a popular tree lined road located between Norbury Park and Norwood Grove. The property has been maintained to a very high standard and extended on the ground floor to create a semi open plan kitchen diner with bi-folding doors leading out to a large south facing garden.

Christian Fields forms part of a score of roads on the leafy and south side of Streatham Common. Residents are spoilt for choice with respect to the number of green spaces on their door step with Streatham Common, Norwood Grove, Biggin Wood and Norbury Park all located within walking distance. There are also a number of local shops, bars and restaurants in the immediate area on both Streatham High Road and Norbury High Street as well as the ever popular Rookery Cafe at the top of Streatham Common. Commuting options are a plenty including Norbury Station, Streatham Station and a number of regular bus routes into the City via Balham and Brixton.







Total area (approx.): 136.7 sq. m (1,471.4 sq. ft)  
Outbuilding: 38.5 sq. m (414.4 sq. ft)

### JACKSONS STREATHAM

1-3 De Montfort Parade,  
Streatham High Road,  
Sales: 020 8487 3179  
Lettings: 020 8487 3180

Energy Rating: D We aim to make our particulars both accurate and reliable. However they are not guaranteed; nor do they form part of an offer or contract. If you require clarification on any points then please contact us, especially if you're traveling some distance to view. Please note that appliances and heating systems have not been tested and therefore no warranties can be given as to their good working order.