



2 Monument Close

Thornton, Liverpool, L23 4TD

Asking price **£565,000**



The Wiltshire - ONE Plot now remaining! This exceptional family home which boasts an OPEN PLAN KITCHEN, DINING & FAMILY area, a UTILITY room, two EN-SUITE bathrooms, FAMILY BATHROOM and a DOUBLE INTEGRATED GARAGE.

Plot 134 sales incentives to include flooring throughout, quartz worktops, wardrobes to bedroom one and turf to the rear garden.

EASYMOVE scheme available, let us help you sell your home!

About The Wiltshire

If you're looking for a seriously spacious new home in Thornton, then The Wiltshire is certainly for you. Upon entering this lavish 4-bedroom home, you are greeted with an open hallway. To the left you will find a generous lounge with a standout bay window allowing light to flood in. To the rear of the ground floor, you will find a magnificent 30ft open plan kitchen/dining/family area. French doors lead out into the garden from the kitchen,



Kitchen 23'5" x 11'7" (7.16 x 3.55)

Utility 6'5" x 5'7" (1.96 x 1.71)

Lounge 17'1" x 12'1" (5.21 x 3.69)

Family 13'3" x 10'4" (4.04 x 3.16)

Cloaks 5'4" x 3'7" (1.64 x 1.10)

Garage 20'8" x 16'7" (6.32 x 5.08)

Bedroom 1 14'11" x 14'4" (4.55 x 4.37)

Bedroom 2 13'3" x 11'3" (4.04 x 3.44)

Bedroom 3 10'8" x 9'10" (3.27 x 3.00)

Bedroom 4 11'2" x 9'10" (3.41 x 3.00)

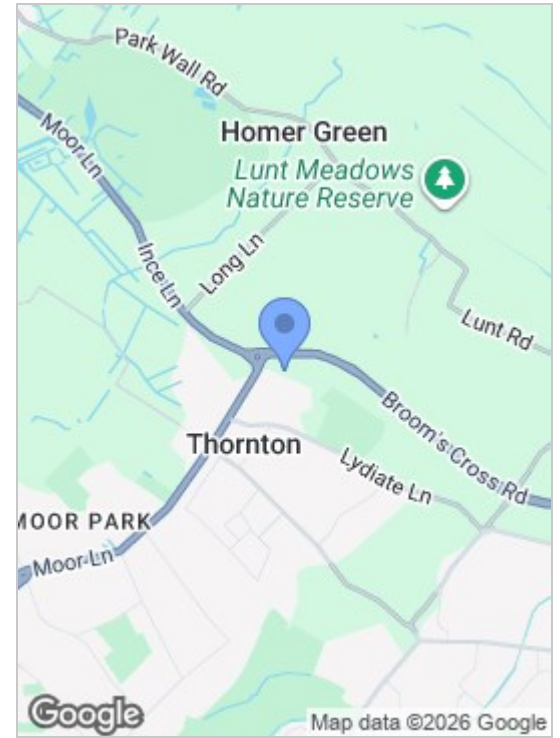
En Suite 1 8'4" x 7'7" (2.55 x 2.33)

En Suite 2 8'5" x 4'10" (2.59 x 1.49)

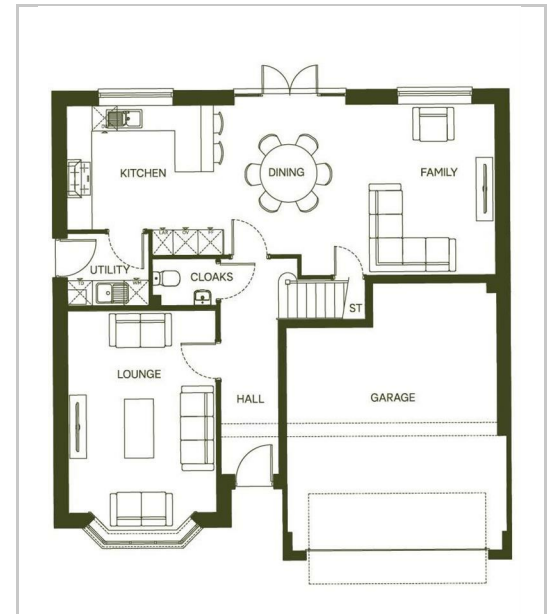
Dressing 9'11" x 7'7" (3.04 x 2.33)

Bathroom 7'0" x 6'4" (2.15 x 1.94)

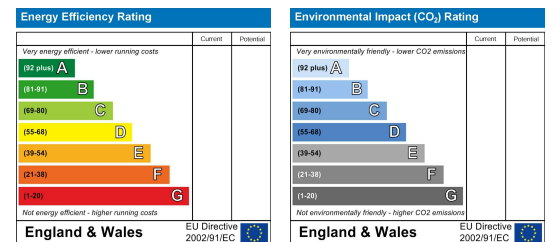
Area Map



Floor Plans



Energy Efficiency Graph



These particulars, whilst believed to be accurate are set out as a general outline only for guidance and do not constitute any part of an offer or contract. Intending purchasers should not rely on them as statements of representation of fact, but must satisfy themselves by inspection or otherwise as to their accuracy. No person in this firm's employment has the authority to make or give any representation or warranty in respect of the property.

82 Coronation Road, Crosby, Liverpool L23 5RH

6 Allerton Road, Mossley Hill, Liverpool, L18 1LN

2 Chapel Lane, Formby, Liverpool, L37 4DU

Tel: 0151 909 3003

Email: crosby@abode.group.co.uk

Web: www.abode-group.co.uk

Tel: 0151 601 3003

Email: allerton@abode-group.co.uk

Web: www.abode-group.co.uk

Tel: 01704 827 402

Email: formby@abode-group.co.uk

Web: www.abode-group.co.uk