



Guide Price
£800,000

Freehold

4x  3x  2x 

**Robin Hood Lane,
Chatham, Kent, ME5**

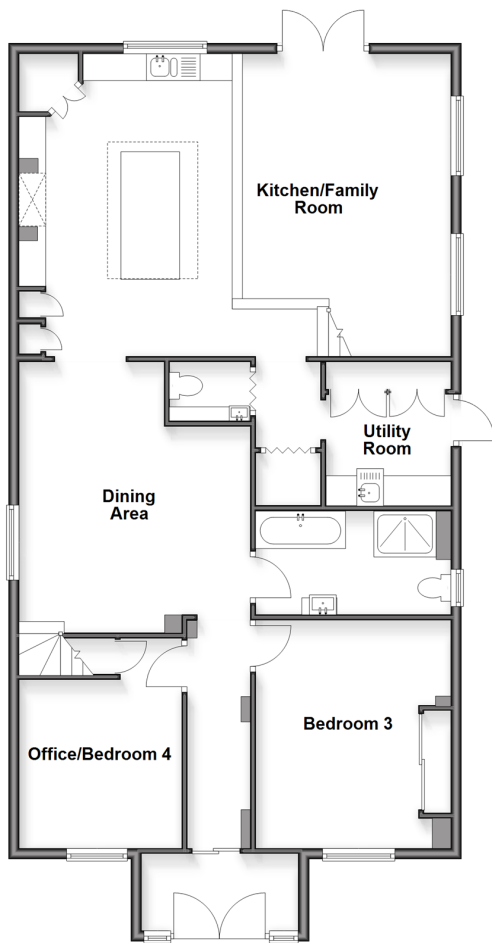
OVER 60?

Secure this property
for up to **59% less!**

Wards
Helping you move forwards

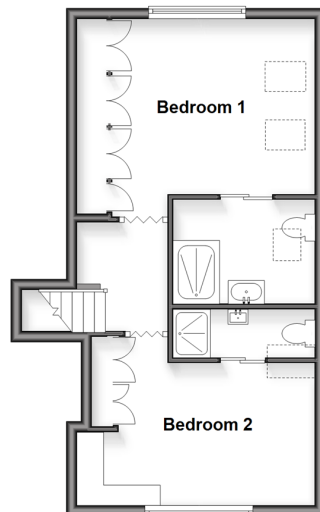
Split Level Ground Floor

Approx. 123.8 sq. metres (1333.0 sq. feet)



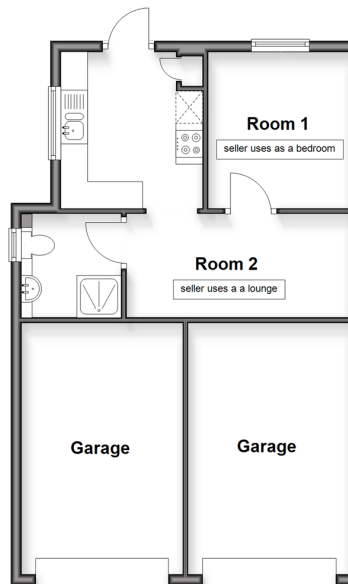
First Floor

Approx. 40.9 sq. metres (439.9 sq. feet)



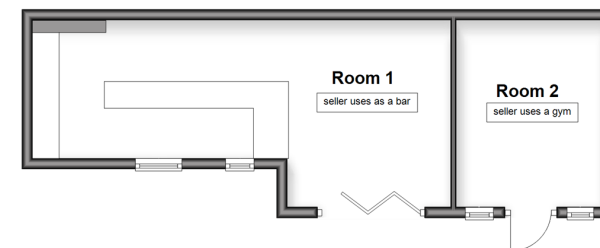
Outbuilding 1

Approx. 28.0 sq. metres (301.6 sq. feet)



Outbuilding 2

Approx. 32.8 sq. metres (353.1 sq. feet)



Accommodation

GROUND FLOOR

Entrance Porch
Hallway
Bedroom 3: 13'9 x 11'9 (4.19m x 3.58m)
Office/Bedroom 4: 10'3 x 9'9 (3.13m x 2.97m)
Bathroom: 11'9 x 6'3 (3.58m x 1.91m)
Dining Area: 19'10 x 14'2 (6.05m x 4.32m)
Downstairs Cloakroom
Utility Room: 7'6 x 7'1 (2.29m x 2.16m)

SPLIT LEVEL

Kitchen/Family Room: 26'3 x 18'4 (8.01m x 5.59m)

FIRST FLOOR

Landing
Bedroom 1: 12'11 x 10'9 (3.94m x 3.28m)
En Suite Shower Room: 8'5 x 6'4 (2.57m x 1.93m)
Bedroom 2: 14'4 x 8'5 (4.37m x 2.57m)
En Suite Shower Room

OUTSIDE

OUTBUILDING

Outbuilding 1
Double Garage

Kitchen: 9'5 x 8'6 (2.87m x 2.59m)

Room 1 (seller uses Bedroom): 9'5 x 8'7 (2.87m x 2.62m)

Room 2 (seller uses as Lounge): 13'4 x 6'3 (4.07m x 1.91m)

Shower Room: 6'3 x 6'0 (1.91m x 1.83m)

OUTBUILDING

Outbuilding 2

Room 1 (seller uses as Bar): (L-shaped) 10'0 x 8'4 (3.05m x 2.54m) plus 15'7 x 8'4 (4.75m x 2.54m)

Room 2 (seller uses as Gym): 11'4 x 9'0 (3.46m x 2.75m)



Main features

- Extended detached chalet bungalow
- Absolutely stunning throughout
- Landscaped garden with outbuilding
- Double garage with outbuilding
- Open plan living space with kitchen and sunken lounge
- Two en suites

Nearest Schools

Primary Schools: Tunbury Primary 0.2 miles, Walderslade Primary 0.6 miles, Oaklands Junior School 0.8 miles

Secondary Schools: Greenacre School 1.0 miles, Walderslade Girls' School 1.1 miles, Bradfields School 1.4

Transport Information

Train Stations: Snodland 3.0 miles, Chatham 3.0 miles, New Hythe 3.1 miles

Address

Robin Hood Lane, Chatham, Kent, ME5

Directions

For directions to this property please contact us.



Wards
Helping you move forwards

Call Walderslade Branch 01634 865661 ■ wardsofkent.co.uk



■ Through a Homewise Home For Life Plan people aged 60+ can secure this property for up to 59% less, by purchasing a Lifetime Lease



12144585/20260415/ML/AJB