



ABERCORN PLACE, NW8

£385,000

Portered building
Double bedroom
Separate kitchen
Ground floor

@marshandparsons
marshandparsons.co.uk

MARSH &
PARSONS

ABOUT THE PROPERTY

A bright and tastefully presented one-bedroom apartment, approximately 389sq ft, located on the ground floor of a portered building in St John's Wood. The accommodation features a spacious double bedroom with built-in storage, a separate fully equipped kitchen, a stylish bathroom, and a welcoming reception room with a designated dining area.

Ideally positioned on Abercorn Place, the property offers excellent transport links via St John's Wood (Jubilee Line) and Maida Vale (Bakerloo Line) underground stations. Residents will also enjoy close proximity to the boutique shops and cafés of St John's Wood High Street, as well as the green open spaces of Regent's Park.



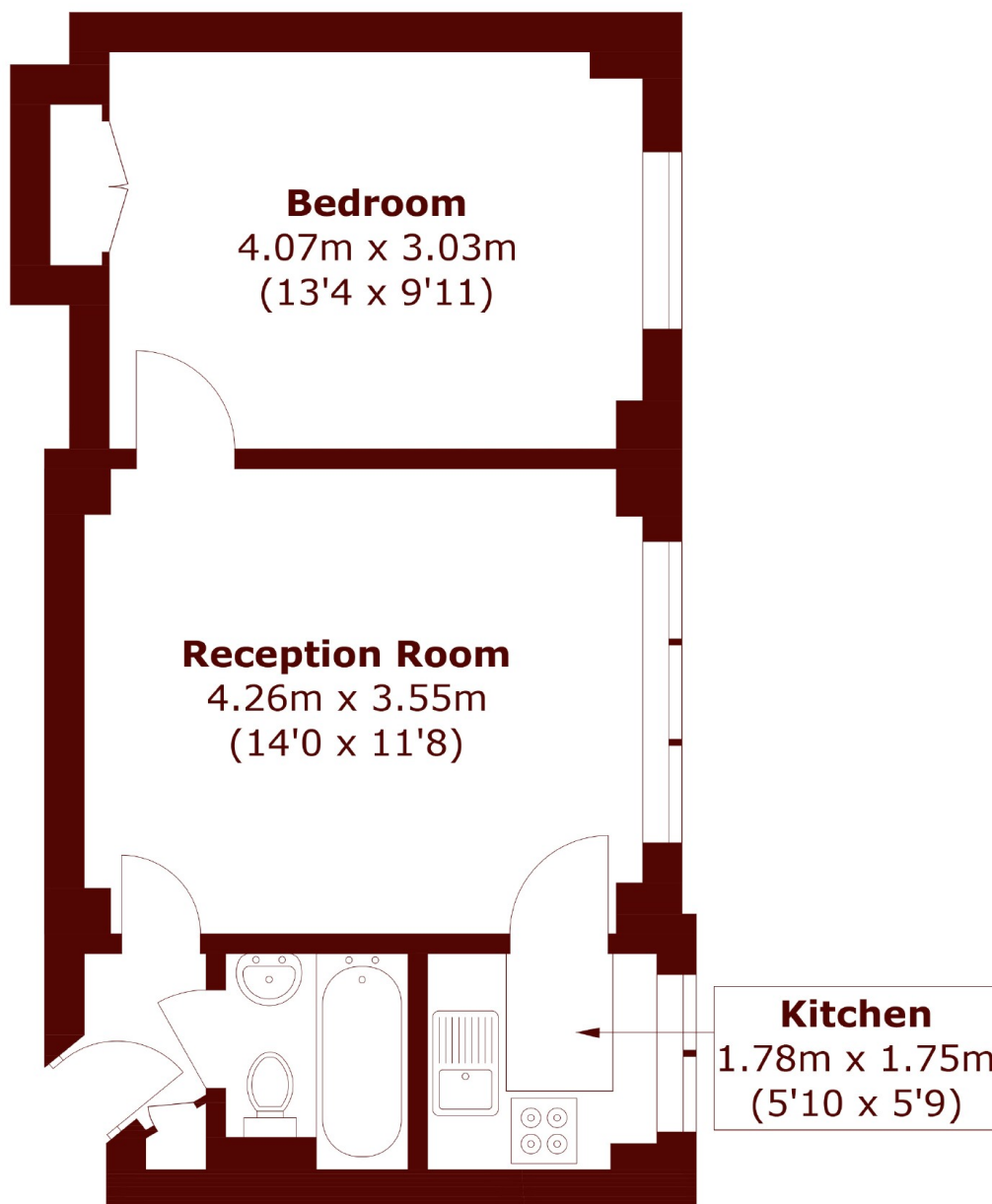




FURTHER DETAILS



STEP INSIDE ABERCORN PLACE



Total area (approx.): 36.2 sq. m (389.6 sq. ft)

Little Venice
020 7993 3050

Energy Rating: D We aim to make our particulars both accurate and reliable. However, they are not guaranteed; nor do they form part of an offer or contract. If you require clarification on any points then please contact us, especially if you're traveling some distance to view. Please note that appliances and heating systems have not been tested and therefore no warranties can be given as to their good working order

**MARSH &
PARSONS**