



Peter Clarke

IN ASSOCIATION WITH Winkworth

40 Oaktree Close, Moreton Morrell, Warwickshire, CV35 9BB

- Village location
- Living room
- Kitchen
- Three bedrooms
- Bathroom
- Rear garden and outbuilding
- Unfurnished
- Available from June 2026
- Current EPC rating D



£1,050 PCM

Available from June 2026, this mid-terrace three-bedroom house is situated within a quiet cul-de-sac in the popular village of Moreton Morrell. Positioned opposite a green space, the property also benefits from nearby parking bays.

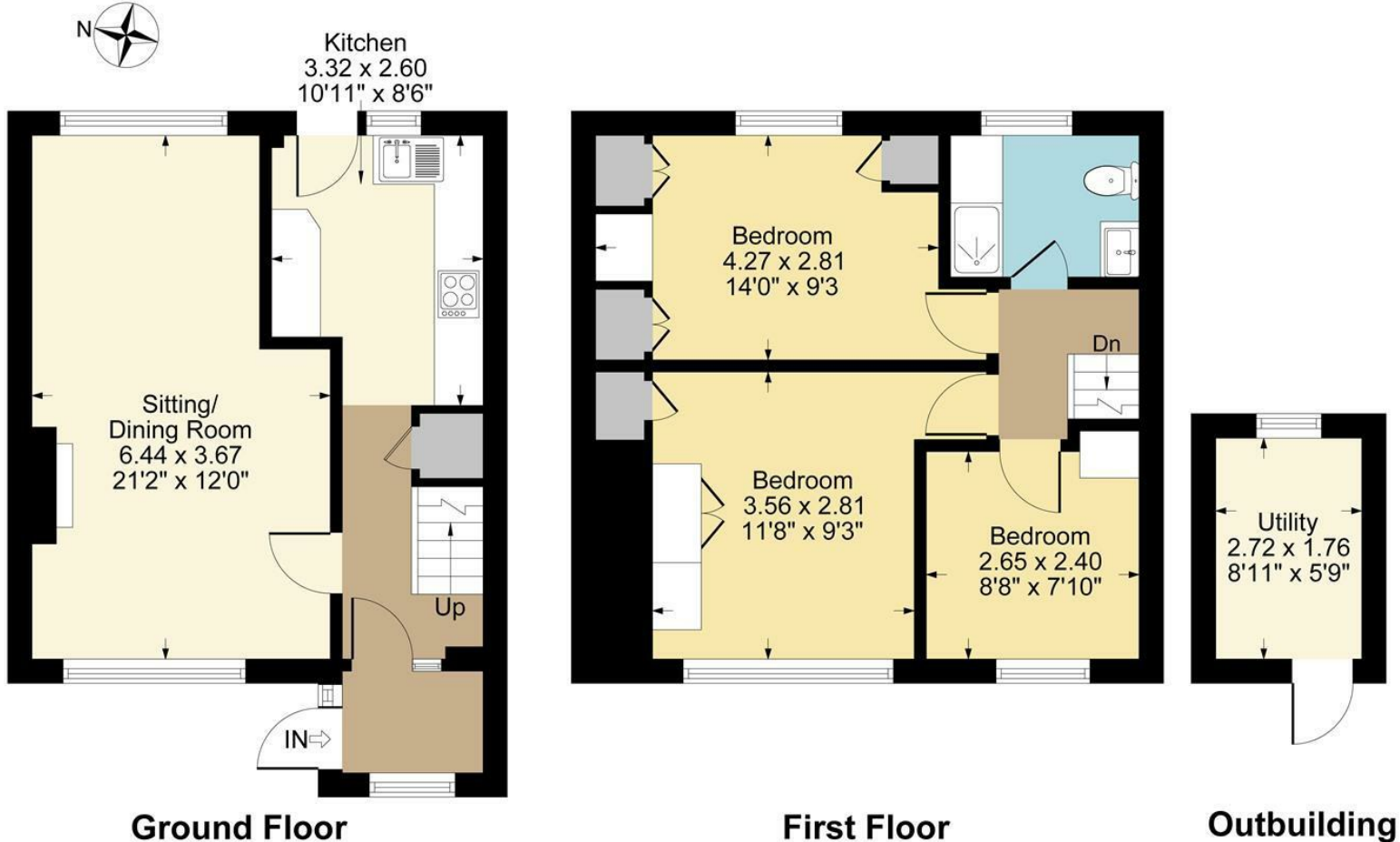
The accommodation briefly comprises a living/dining room, kitchen, three bedrooms, and a family bathroom. Externally, the property offers a generous rear garden.

Please note: previous marketing images have been used, and some redecoration works are scheduled to take place in the coming weeks.

Council Tax Band C | EPC Rating E



40 Oaktree Close, Moreton Morrell, CV35 9BB



Approximate Gross Internal Area = 84.24 sq m / 907 sq ft  
(Including Outbuilding)  
Illustration for identification purposes only,  
measurements are approximate, not to scale.



DISCLAIMER: HMR Homes Limited t/a Peter Clarke in association with Winkworth themselves and for the vendors or lessors of this property whose agents they are, give notice that the particulars are set out as a general outline only for the guidance of intending purchasers or lessors, and do not constitute part of an offer or contract; all descriptions, dimensions, references to condition and necessary permission for use and occupation, and other details are given without responsibility and any intending purchasers or tenants should not rely on them as statements or presentations of fact but must satisfy themselves by inspection or otherwise as to the correctness of each of them. Room sizes are given on a gross basis, excluding chimney breasts, pillars, cupboards, etc. and should not be relied upon for carpets and furnishings. We have not carried out a detailed survey and/or tested services, appliances and specific fittings. No person in the employment of HMR Homes Limited t/a Peter Clarke in association with Winkworth has any authority to make or give any representation of warranty whatever in relation to this property and it is suggested that prospective purchasers walk the land and boundaries of the property, prior to exchange of contracts, to satisfy themselves as to the exact area of land they are purchasing.

Multi-award winning offices  
serving South Warwickshire & North Cotswolds

Warwick Road, Wellesbourne, Warwickshire, CV35 9ND  
01789 841114 | [wellesbourne@peterclarke.co.uk](mailto:wellesbourne@peterclarke.co.uk) | [www.peterclarke.co.uk](http://www.peterclarke.co.uk)



Peter Clarke

IN ASSOCIATION WITH Winkworth