



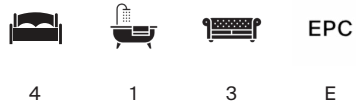
GROVE WAY

Esher, Surrey KT10



A 1930'S FAMILY HOME CLOSE TO THE STATION

A 1930's family home requiring modernisation and offering potential to extend and enlarge. The property is ideally located for Esher station and backing onto fields and the River Ember to the rear.



Local Authority: Elmbridge Borough Council

Council Tax band: G

Tenure: Freehold



KEY FEATURES

- * Potential to extend (STPP)
- * 4 bedrooms
- * West facing rear garden
- * Open aspect across fields to the rear
- * 0.75 miles to Esher station











LOCATION

The property is conveniently located for Esher mainline station and within a short distance of Esher High Street which has an excellent range of restaurants and shops including Waitrose, Starling (Michelin Star restaurant), Cote, Giggling Squid, The Good Earth, and Everyman Cinema along with a number of coffee shops and pubs.

Schooling in the area is superb with a large number of private and state schools in the immediate area including Weston Green, Claremont Fan Court, Hampton, LEH, Shrewsbury House, and Rowan. State education is excellent including St Paul's Catholic School, Esher High, Esher Church School, and Cranmere.

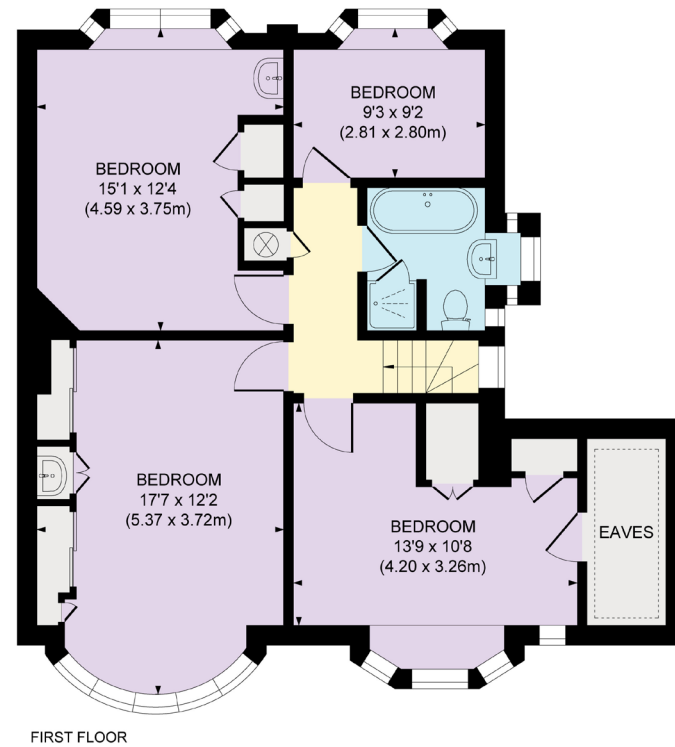
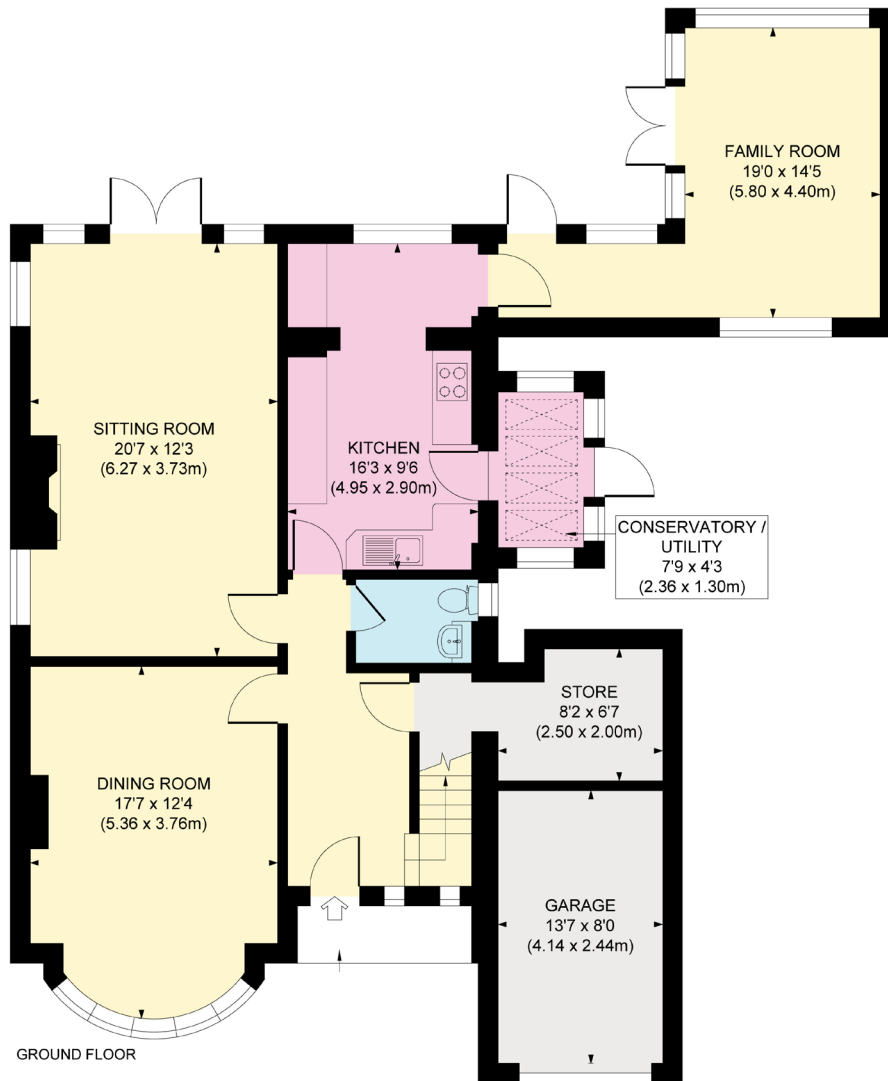
There is an excellent choice of recreational activities with Colets Health and Fitness and Sandown Park offering gym, swimming, squash, creche and day nursery, skiing, golf and go-karting. The historic Hampton Court Palace and Bushey Royal Park are close by. The towns of Kingston upon Thames and Guildford are a short distance away providing a wide selection of high street names and department stores.





Approximate Gross Internal Area

Main House 1,746 sq. ft / 162.19 sq. m
Garage 111 sq. ft / 10.35 sq. m
Total 1,857 sq. ft / 172.54 sq. m



This plan is for layout guidance only. Not drawn to scale unless stated. Windows and door openings are approximate. Whilst every care is taken in the preparation of this plan, please check all dimensions, shapes and compass bearings before making any decisions reliant upon them. (ID767266)

Maisie Bywater

+44 1372230466

maisie.bywater@knightfrank.com

Victoria Miles

+44 1372239971

victoria.miles@knightfrank.com



Knight Frank Esher

47 High St, Esher KT10 9RL

knightfrank.co.uk

Your partners in property

1. Particulars: These particulars are not an offer or contract, nor part of one. You should not rely on statements given by Knight Frank in the particulars, by word of mouth or in writing ("information") as being factually accurate about the property, its condition or its value. Neither Knight Frank nor any joint agent has any authority to make any representations about the property, and accordingly any information given is entirely without responsibility on the part of Knight Frank. 2. Material Information: Please note that the material information is provided to Knight Frank by third parties and is provided here as a guide only. While Knight Frank has taken steps to verify this information, we advise you to confirm the details of any such material information prior to any offer being submitted. If we are informed of changes to this information by the seller or another third party, we will use reasonable endeavours to update this as soon as practical. 3. Photos, Videos etc: The photographs, property videos and virtual viewings etc. show only certain parts of the property as they appeared at the time they were taken. Areas, measurements and distances given are approximate only. 4. Regulations etc: Any reference to alterations to, or use of, any part of the property does not mean that any necessary planning, building regulations or other consent has been obtained. A buyer must find out by inspection or in other ways that these matters have been properly dealt with and that all information is correct. 5. Fixtures and fittings: A list of the fitted carpets, curtains, light fittings and other items fixed to the property which are included in the sale (or may be available by separate negotiation) will be provided by the Seller's Solicitors. 6. VAT: The VAT position relating to the property may change without notice. 7. To find out how we process Personal Data, please refer to our Group Privacy Statement and other notices at <https://www.knightfrank.com/legals/privacy-statement>.

Particulars dated April 2026. Photographs and videos dated April 2026. All information is correct at the time of going to print. Knight Frank is the trading name of Knight Frank LLP. Knight Frank LLP is a limited liability partnership registered in England and Wales with registered number OC305934. Our registered office is at 55 Baker Street, London W1U 8AN. We use the term 'partner' to refer to a member of Knight Frank LLP or an employee or consultant. A list of members names of Knight Frank LLP may be inspected at our registered office. If you do not want us to contact you further about our services then please contact us by either calling 020 3544 0692, email to marketing.help@knightfrank.com or post to our UK Residential Marketing Manager at our registered office (above) providing your name and address.

