



Standard Road, TW4

£2,600 Per calendar month

This newly built detached family home offers four spacious bedrooms, a separate modern kitchen, bright living areas, ample storage, private garden, and off street parking for multiple vehicles, delivering comfort, convenience, and contemporary style throughout.

Standard Road is a popular residential road centrally located and only a short walk to the Piccadilly Line with links to Central London and Heathrow. There are also amazing road links to the city.

Features

- Newly Built House
- Three/Four Bedrooms
- Two Bathrooms
- Private Garden
- Off Street Parking
- Ample Storage



Standard Road, TW4

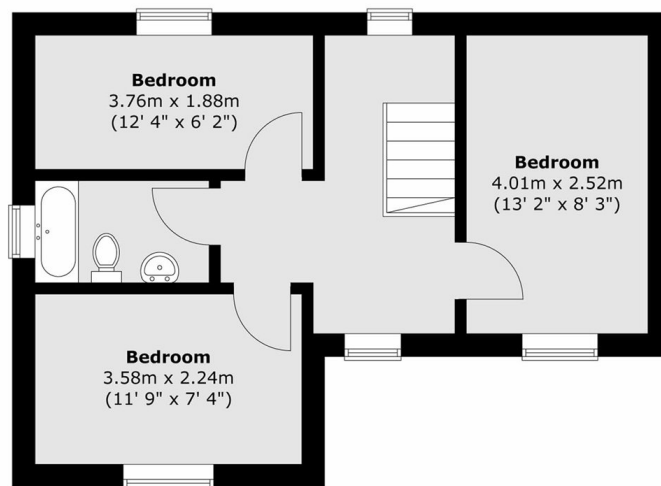
Step inside this newly built detached home to discover bright reception and dining room/bedroom, a separate modern kitchen with sleek finishes, and ample storage throughout, creating an inviting space perfectly suited for comfortable family living.

Upstairs offers three well proportioned bedrooms filled with natural light, complemented by a contemporary family bathroom, providing peaceful retreats for every household member while maintaining practical layout and generous space for relaxation and daily comfort.

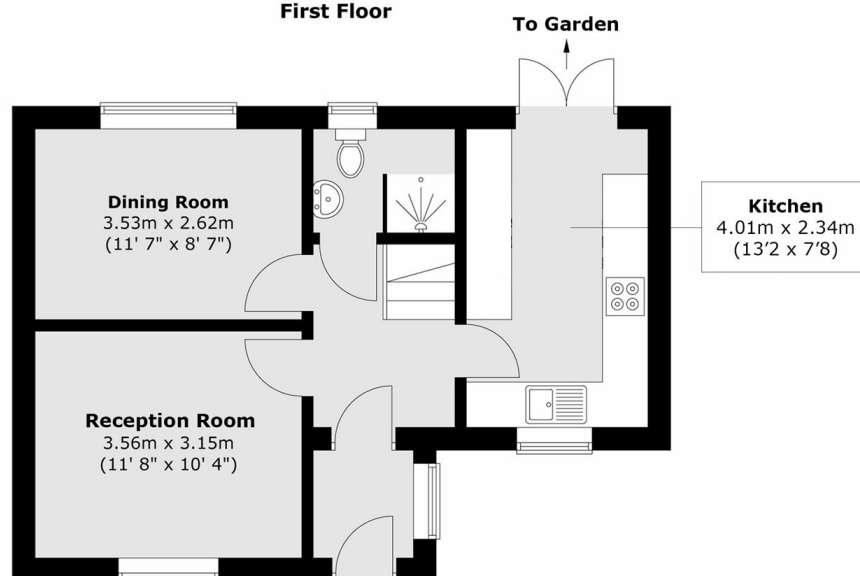
Outside, enjoy a private garden ideal for entertaining or quiet afternoons, alongside off street parking for multiple vehicles, ensuring convenience, security, and easy access, making this home perfectly positioned for modern family lifestyles and comfort.



Standard Road, Hounslow, TW4



First Floor



Ground Floor

Total area (approx.) : 81.7 sq. m (879 sq. ft)