



**Gressenhall Road, SW18**  
**£1,050,000**

**Dexters**



## Gressenhall Road, SW18

An exceptional opportunity to acquire a substantial 1,526 sq. Ft (141.8 sq. M) three-bedroom residence that perfectly blends modern luxury with practical family living. Boasting an immaculate interior, a vast open-plan entertaining space, and direct access to a private garden, this property offers a rare amount of space and style.

The heart of this home is undoubtedly the spectacular kitchen/reception room. This space is flooded with natural light and features engineered hardwood flooring throughout. The bespoke media wall with integrated shelving and LED lighting adds a touch of contemporary elegance to the lounge area. The kitchen features a massive central island with bar seating, built in appliances and extensive storage.

Two sets of bi-fold style doors connect the kitchen and living areas to the rear garden, creating a seamless indoor-outdoor flow. Half of the terrace is paved with large-format tiles, providing the perfect spot for outdoor furniture and alfresco dining, with the other finished in artificial grass and a cedar-wood panelled bench and feature wall. With secure access from one side of the building, the terrace offers a low-maintenance outdoor haven.

The generously sized principal bedroom has ample built-in wardrobe storage, floor-to-ceiling windows that maximize light and a stylish en-suite shower room featuring a walk-in rainfall shower.

There are two further double bedrooms, both well-proportioned and finished to the same high standard. These rooms offer flexibility for use as a nursery, guest room, or a spacious home office, with direct access to private courtyard/

### Features

Over 1,500 sq. ft of lateral living space, with high ceilings throughout

Huge 36ft open-plan kitchen and reception room (36' x 19')

Own front door, and access via a





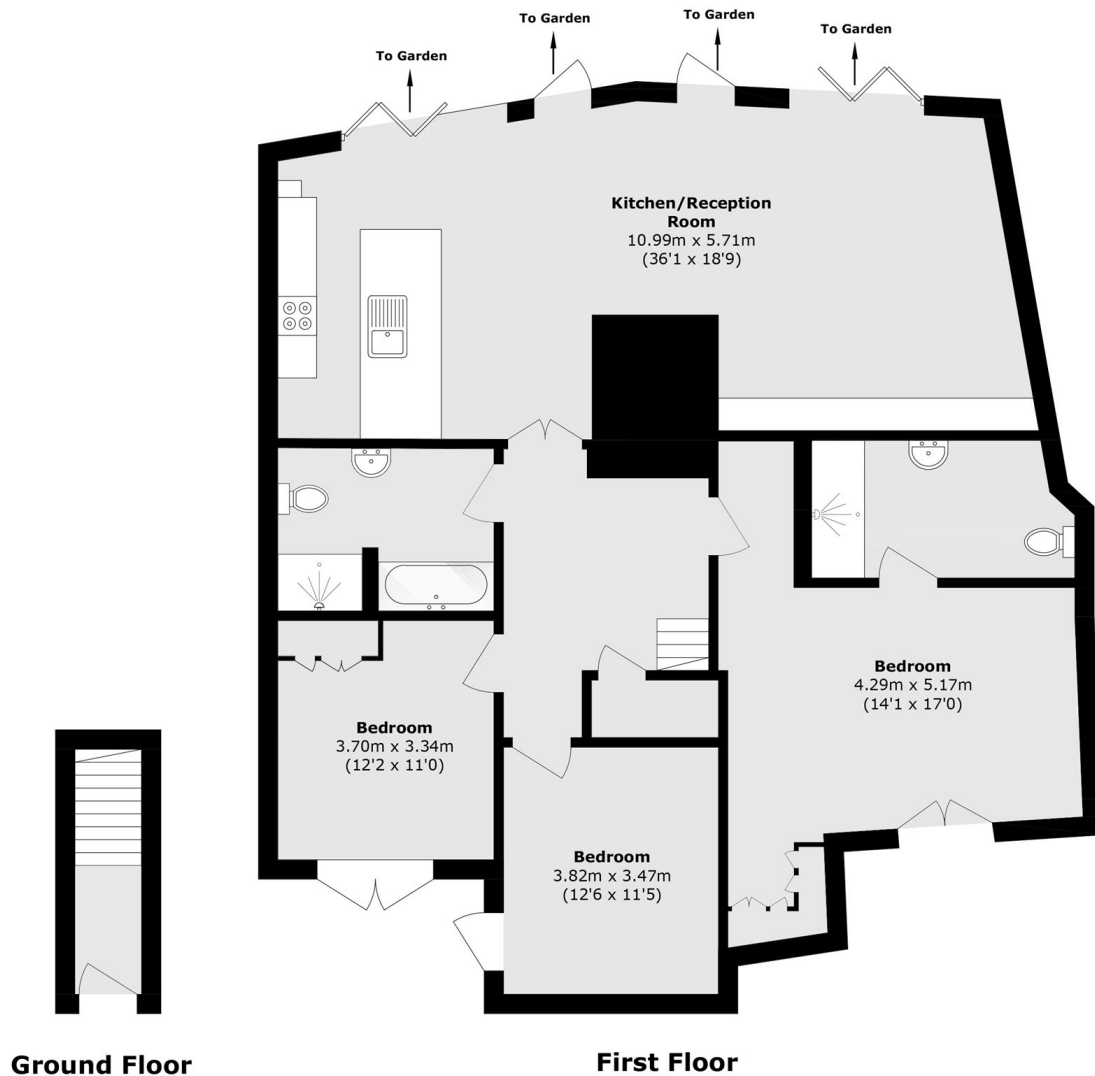








# Gressenhall Road, London, SW18



Total area (approx.): 141.8 sq. m (1526.3 sq. ft)

## Dexters

Putney  
176 Putney High Street  
London  
SW15 1RS  
Sales  
020 8789 9999

Energy Rating: . We aim to make our particulars both accurate and reliable. However they are not guaranteed; nor do they form part of an offer or contract. If you require clarification on any points then please contact us, especially if you're traveling some distance to view. Please note that appliances and heating systems have not been tested and therefore no warranties can be given as to their good working order.

 **RICS** | Regulated  
Estate Agent  
and Letting Agent

[dexters.co.uk](https://www.dexters.co.uk)