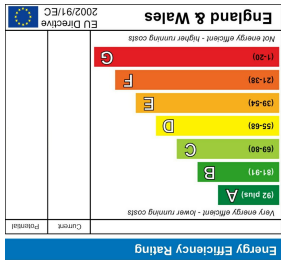
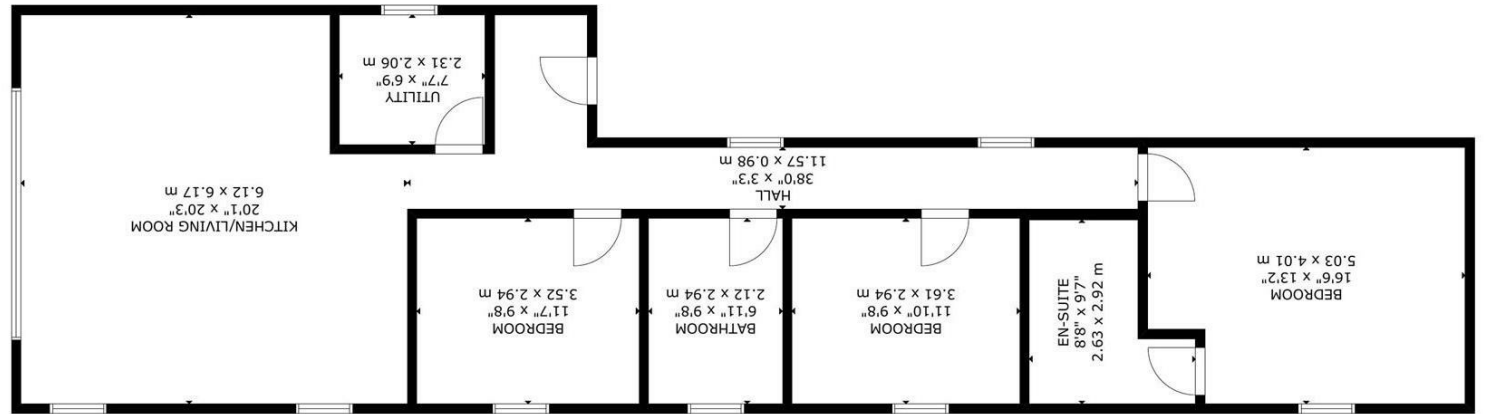
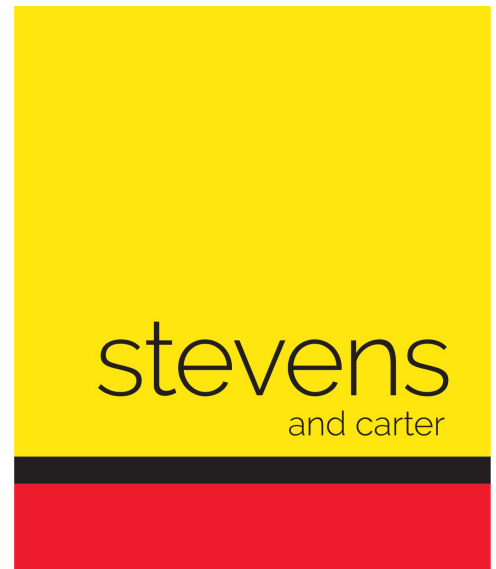
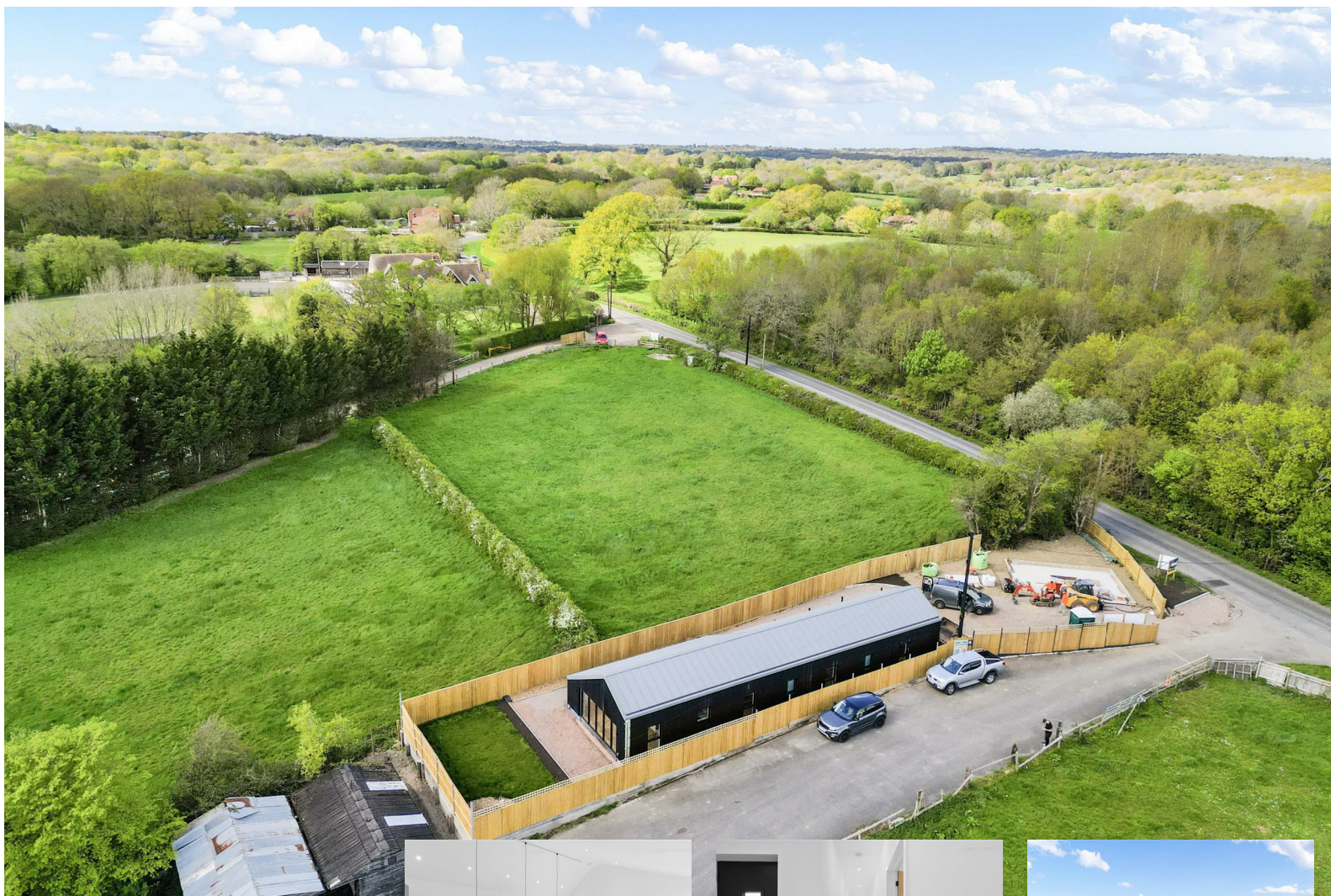


FLOOR 1

GROSS INTERNAL AREA
TOTAL: 112 m²/1,205 sqft
FLOOR 1: 112 m²/1,205 sqft
SIZE AND DIMENSIONS ARE APPROXIMATE, ACTUAL MAY VARY



Marle Green, Hellingly



- Barn Inspired Bungalow
- Rural Outlook
- Countryside Location
- High Specification
- Airsource Heat Pump
- Underfloor Heating
- Solar and Batteries
- Integral Appliances
- 10 Year Guarantee



Freehold

£650,000

3 BEDROOM 1 RECEPTION 2 BATHROOM 2 GARAGE

Marle Green, Hellingly

Marle Green, Hellingly

DESCRIPTION

Bridlewood Barn presents a rare opportunity to acquire a thoughtfully designed new home in a peaceful countryside setting. Situated in Marle Green, Grove Hill, on the border of Hellingly and Horam, the property enjoys a rural outlook whilst remaining within easy reach of local village amenities and good transport links.

This individual home is currently under construction and has been designed with great attention to detail, making use of Insulated Concrete Formwork. Once complete, the result will be a highly efficient property offering reduced running costs and a comfortable environment throughout the year. Heating will be supplied by an air source heat pump with underfloor heating throughout, complemented by solar panels with battery storage. A mechanical ventilation heat recovery system by Vent Axia will ensure a constant supply of fresh air, while air conditioning will provide additional comfort during the warmer months.

The interior layout has been planned with both practicality and contemporary living in mind. At the heart of the home will be a spacious open plan kitchen and living area. The kitchen is set to be fitted with integral Bosch appliances, and large bi-folding doors will open directly onto the garden, where level porcelain tiling will continue from the living area to create a seamless transition between indoor and outdoor space. A separate utility room will house an integral Bosch washing machine with space for a tumble dryer.



Marle Green, Hellingly

